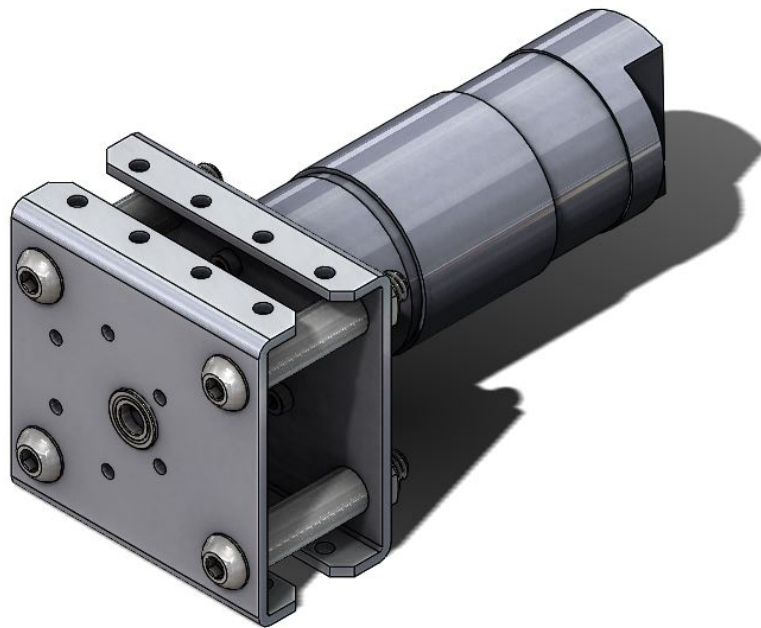


User Guide

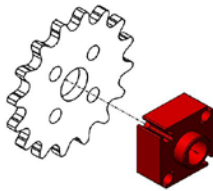
PicoBox Solo



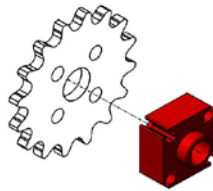
PicoBox Solo (am-3432)

Sprocket Assembly (QTY 1)

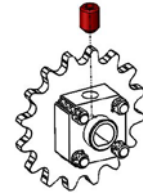
Step 1: Install a 6mm D-Bore Double Boss Nub (am-3215) on a 16T Ninja Star Sprocket (am-3282)



Step 2: Use four 6-32 x 0.500" long Button Head Screws (am-1418) to attach the sprocket to the nub.

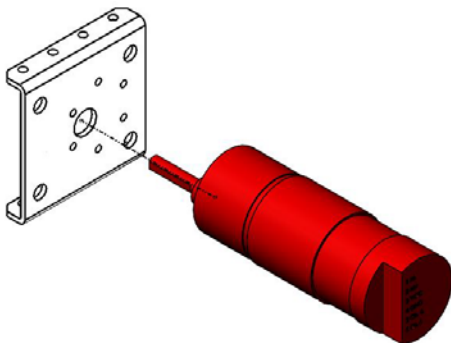


Step 3: Thread a #10-32 Set Screw (am-1342) partially into the nub.

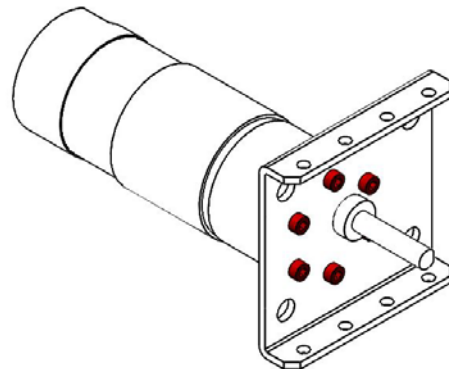


1X

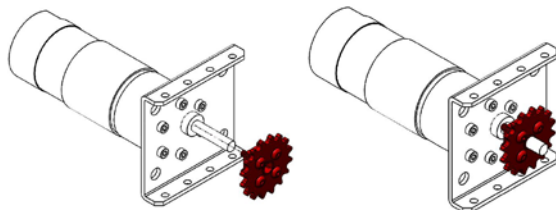
Step 1: Insert a NeveRest motor into 12mm hole of the PicoBox Solo gearbox plate (am-3440), opposite of the flanges on the gearbox, and line up the threaded holes on the end of the motor with the bolt-circle holes of the gearbox plate.



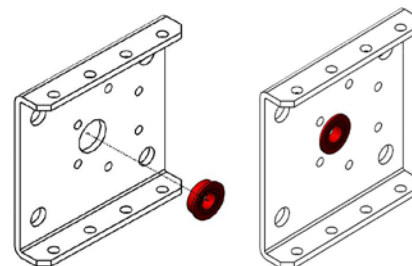
Step 2: Install six M3 x 0.5 x 6mm long socket head screws (am-1254) in each NeveRest motor to secure it to the gearbox plate



Step 3: Install the Sprocket Assembly onto the center axle of the gearbox. Be sure to place the Nub closest to the NeveRest. Tighten the #10-32 set screw to lock the Sprocket Assembly in place.

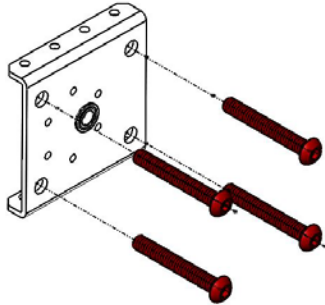


Step 4: Press a 6x12x4 Flanged Bearing (am-3377) into the center 12mm hole of a PicoBox Solo gearbox plate (am-3440).

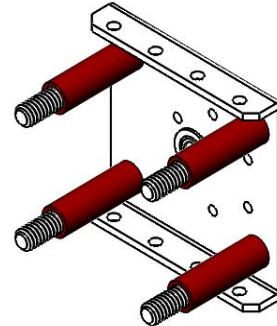


NOTE: Make sure the flange of the bearing is flush against the sheet metal of the gearbox plate.

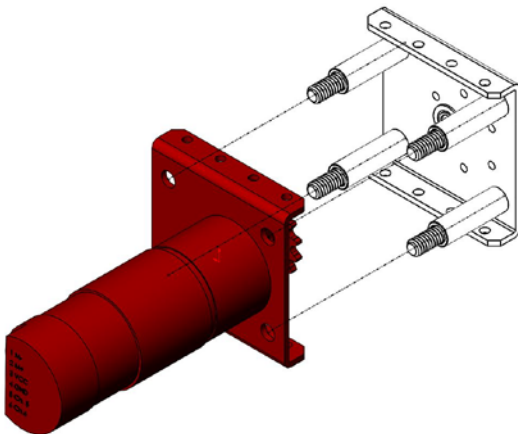
Step 5: Insert four 1/4-20 x 1.75" Button Head Screws (am-1420) into the side of the PicoBox Solo gearbox plate without the flange



Step 6: Place a PicoBox Spacer (am-3406) over all four 1/4-20 screws on the side of the PicoBox Solo gearbox plate with the flanges.



Step 7: Insert the Axle of the Gearbox Assembly into the bearing on the PicoBox Solo gearbox plate. Align the four 1/4-20 screws with the 1/4" holes on the PicoBox Solo gearbox plate.



Step 8: Secure the PicoBox with four 1/4-20 Nylock Jam Nuts (am-1102).

