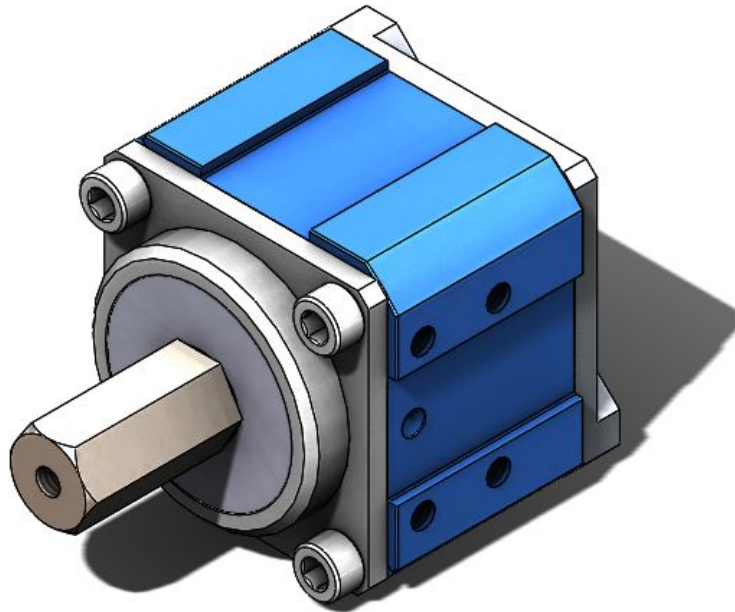
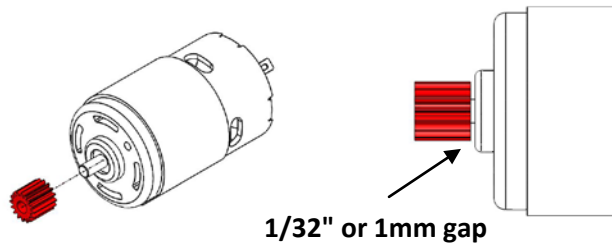


57 Sport

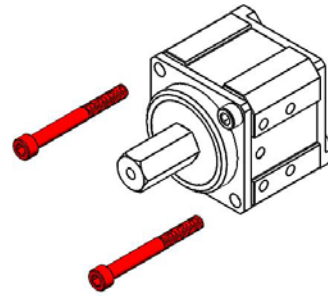
Motor Installation Guide



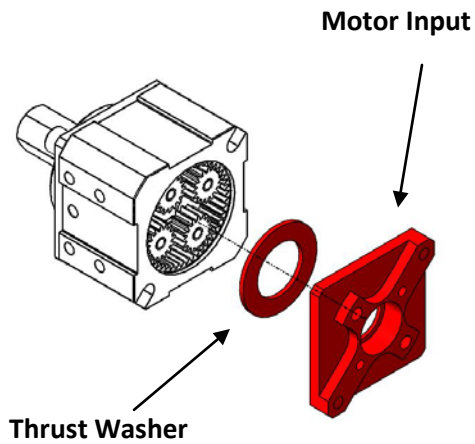
Step 1 : Carefully press the pinion provided with the 57 Sport gearbox onto the RedLine, 700 or 500 series motor. Be sure to leave a small (~1/32" or 1mm) gap between the pinion and the output shaft bushing.



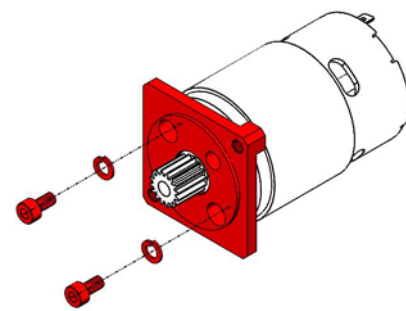
Step 2: Remove the two 10-32 x 1.75 in. Socket Head Screws from the 57 Sport.



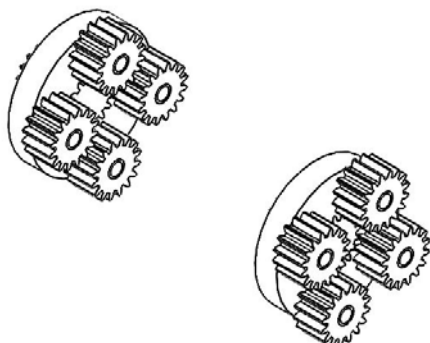
Step 3: Remove the Motor Input Block and the steel Thrust Washer. Set the Thrust Washer aside on a clean shop towel or paper towel.



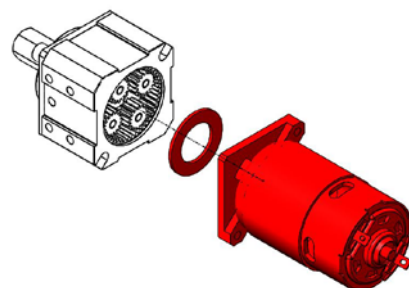
Step 4: Attach the Motor Input Block to the RedLine, 700 or 500 series motor (with previously attached pinion) using the included M4-0.7 Socket Head Screws and M4 Lock Washers. Be sure to install the Motor Input Block with the non-circular side against the motor.



Step 5: Be sure to add a pea-sized amount of included Red Tacky Grease (am-2768) to the gear teeth. If more than one stage is present in the gearbox, add grease to each stage.



Step 6: Reinstall the Thrust Washer into the 57 Sport onto the surface of the gears inside the gearbox. Insert the Motor Assembly into the gearbox, and gently turn the output shaft until the gears mesh.



Step 7: Once the gearbox is put together, reinstall the 10-32 x 1.750 Socket Head to secure the Motor Assembly.

