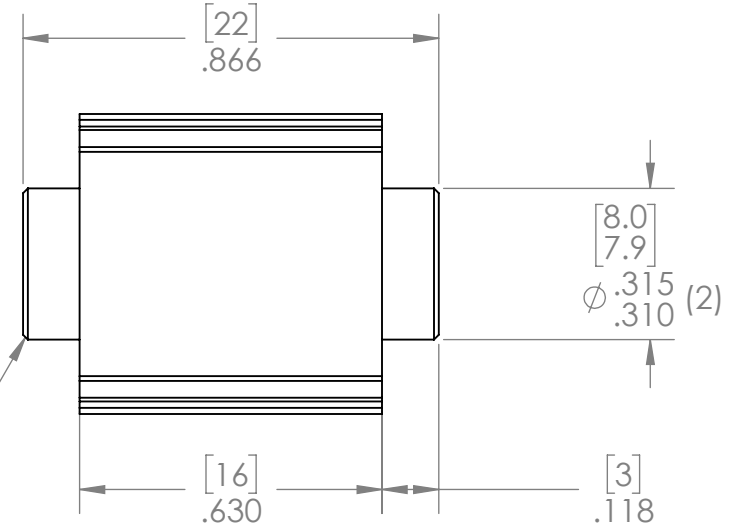
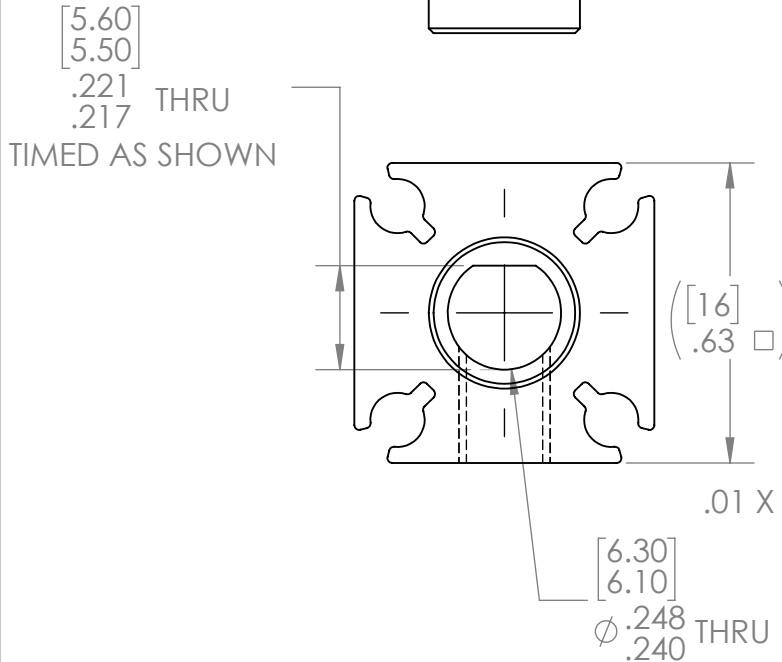
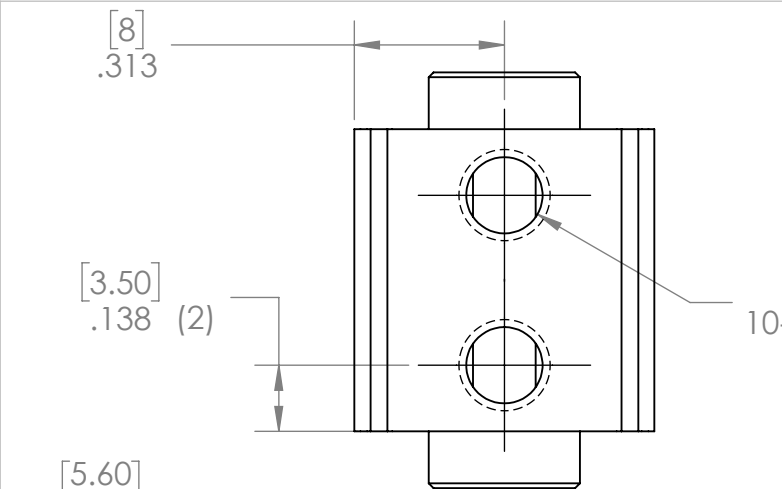
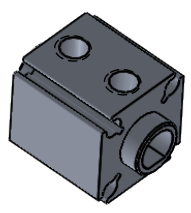



REVISION HISTORY			
REV.	DESCRIPTION	DATE	DRAWN BY
1	ORIGINAL PRINT	7/28/2016	D. BLAU
2	DRAWN TO MEET AMDS-1	5/29/2018	B. HODSON



*** SEE CAD FOR ADDITIONAL TOOLPATH INFO***



UNLESS OTHERWISE SPECIFIED:		COMMENTS:			
DIMENSIONS ARE IN INCHES		DUAL DIMENSIONS ARE IN MILLIMETERS.			
TOLERANCES:		BREAK ALL SHARP EDGES.		TITLE:	
FRACTIONAL	±1/16			6MM D-BORE XL	
ANGULAR: MACH	±1°			DOUBLE BOSS NUB	
ANGULAR: BEND	±5°			SIZE	
ONE PLACE DECIMAL	±0.1			DWG. NO.	
TWO PLACE DECIMAL	±0.01			A am-3441a	
THREE PLACE DECIMAL	±0.005			REV	
FOUR PLACE DECIMAL	±0.0005			2	
MATERIAL	6105-T5 ALUMINUM	CHECKED	NAME	DATE	SCALE: 2.5:1
FINISH	TUMBLER	ENG APPR.	NL	6/25/18	SHEET 1 OF 1
DO NOT SCALE DRAWING		MFG APPR.			
		Q.A.			