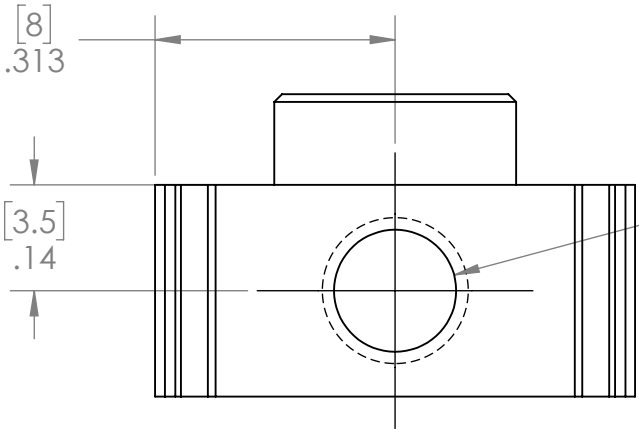
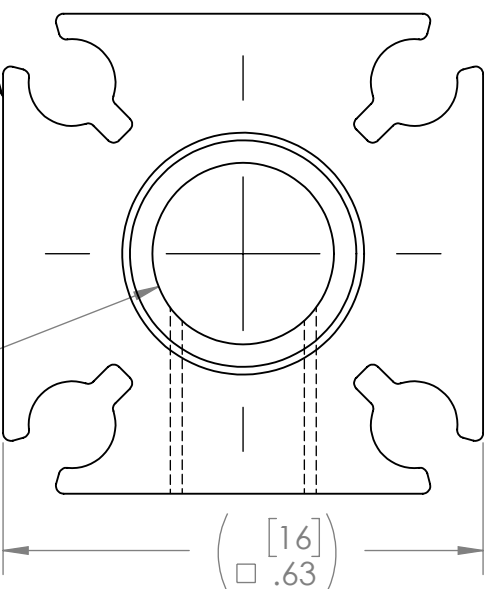


REVISION HISTORY			
REV.	DESCRIPTION	DATE	DRAWN BY
1	ORIGINAL PRINT	7/28/2016	D. BLAU
2	DRAWN TO MEET AMDS-1	5/29/2018	B. HODSON

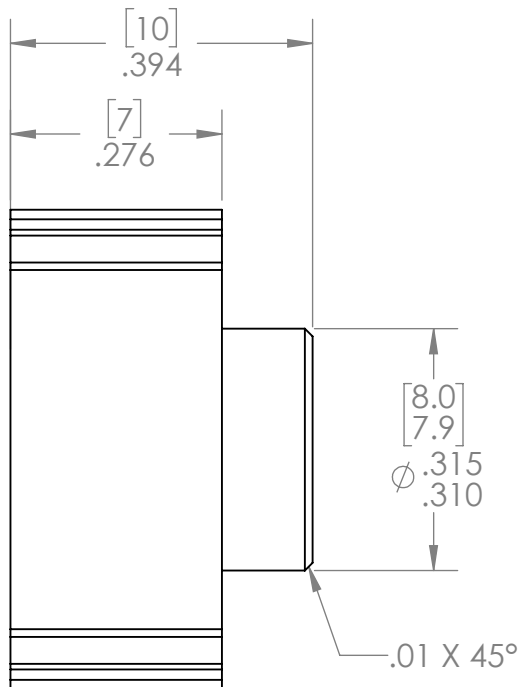


Ø .159 THRU TO PART CENTERLINE
10-32 UNF THRU TO PART CENTERLINE

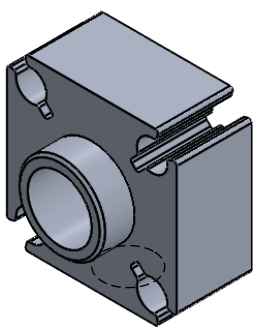
ex-3215 EXTRUSION



[6.30]
[6.10]
Ø .248 THRU



*** SEE CAD FOR ADDITIONAL TOOLPATH INFO***



UNLESS OTHERWISE SPECIFIED:		COMMENTS:	
DIMENSIONS ARE IN INCHES		DUAL DIMENSIONS ARE IN MILLIMETERS.	
TOLERANCES:		BREAK ALL SHARP EDGES	
FRACTIONAL	±1/16	CHECKED	NAME
ANGULAR: MACH	±1°	ENG APPR.	NL
ANGULAR: BEND	±5°	MFG APPR.	DATE
ONE PLACE DECIMAL	±0.1	Q.A.	6/25/18
TWO PLACE DECIMAL	±0.01		
THREE PLACE DECIMAL	±0.005		
FOUR PLACE DECIMAL	±0.0005		
MATERIAL	6105-T5 ALUMINUM		
FINISH	TUMBLER		
DO NOT SCALE DRAWING			



TITLE:
**6MM ROUND BORE
SINGLE BOSS NUB**

SIZE	DWG. NO.	REV
A	am-3442a	2
SCALE: 4:1	WEIGHT:	SHEET 1 OF 1