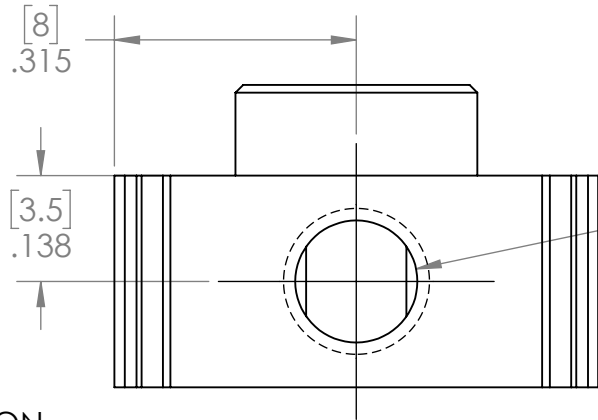
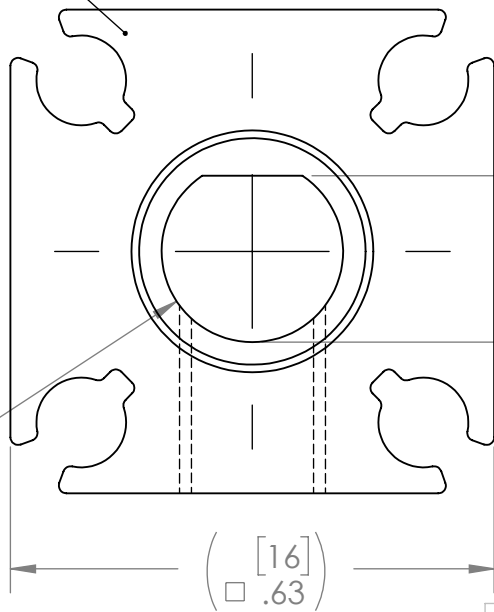


REVISION HISTORY			
REV.	DESCRIPTION	DATE	DRAWN BY
1	ORIGINAL PRINT	7/28/2016	D. BLAU
2	DRAWN TO MEET AMDS-1	5/29/2018	B. HODSON



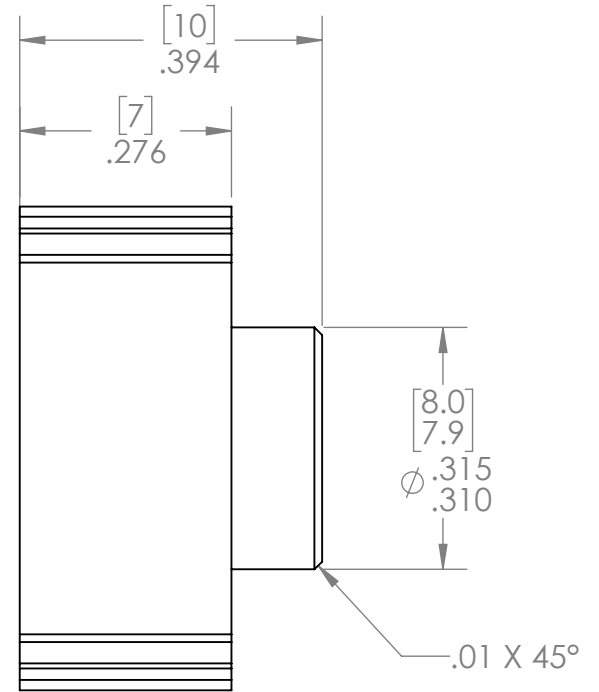
Ø.159 THRU TO PART CENTERLINE
10-32 UNF THRU TO PART CENTERLINE

ex-3215 EXTRUSION

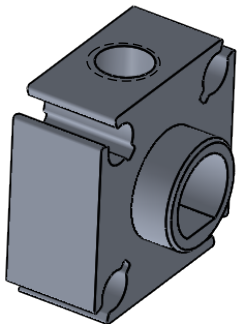


[5.60]
[5.50]
.221 THRU
.217
TIMED AS SHOWN

[6.30]
[6.10]
Ø.248 THRU
.240



*** SEE CAD FOR ADDITIONAL TOOLPATH INFO***



UNLESS OTHERWISE SPECIFIED:

COMMENTS:

DIMENSIONS ARE IN INCHES

DUAL DIMENSIONS ARE IN MILLIMETERS.

TOLERANCES:	
FRACTIONAL	±1/16
ANGULAR: MACH	±1°
ANGULAR: BEND	±5°
ONE PLACE DECIMAL	±0.1
TWO PLACE DECIMAL	±0.01
THREE PLACE DECIMAL	±0.005
FOUR PLACE DECIMAL	±0.0005

BREAK ALL SHARP EDGES
CHECK D BORE WITH GO/NOGO PIN

MATERIAL
6105-T5 ALUMINUM

FINISH
TUMBLED

DO NOT SCALE DRAWING

CHECKED	NAME	DATE
ENG APPR.	NL	6/25/18
MFG APPR.		
Q.A.		



TITLE:
**6MM D-BORE
SINGLE BOSS NUB**

SIZE DWG. NO. REV
A am-3443a **2**

SCALE: 4:1 WEIGHT: SHEET 1 OF 1