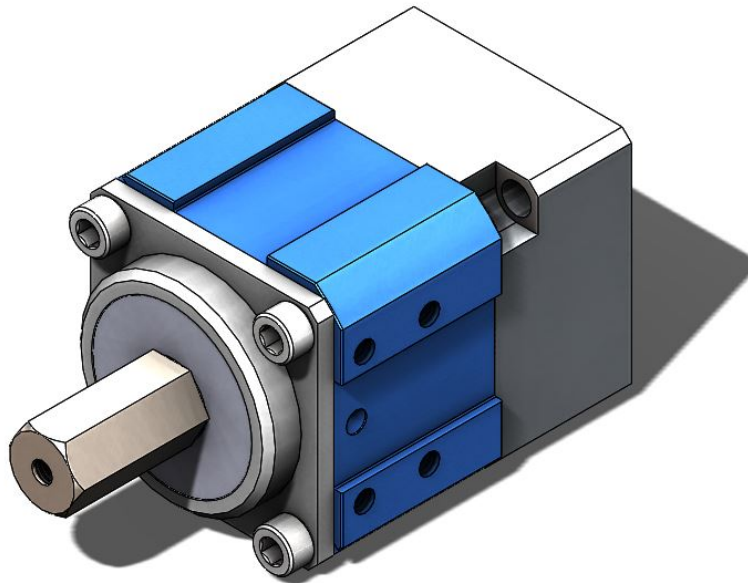
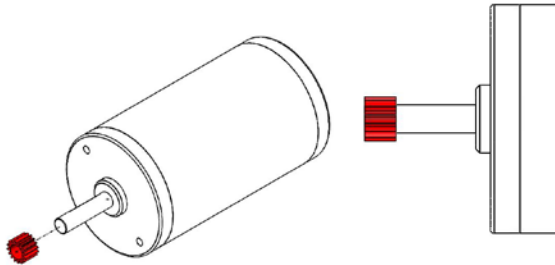


CIM Sport

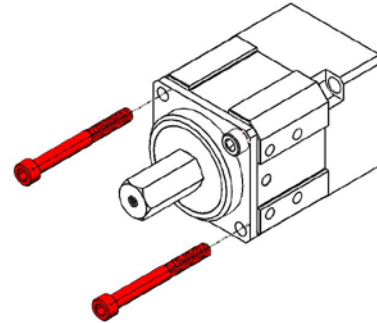
Motor Installation Guide



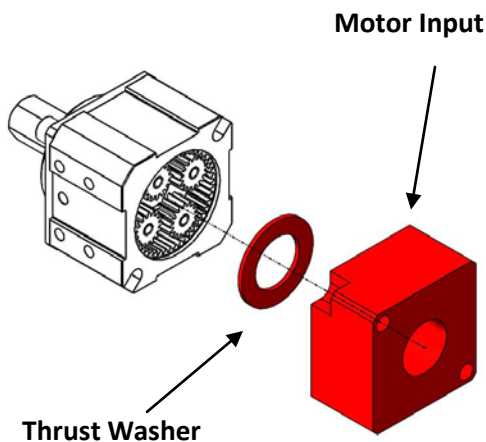
Step 1 : Carefully press the pinion provided with the CIM Sport gearbox onto the CIM Motor. Press the pinion so it is flush with the end of the CIM shaft.



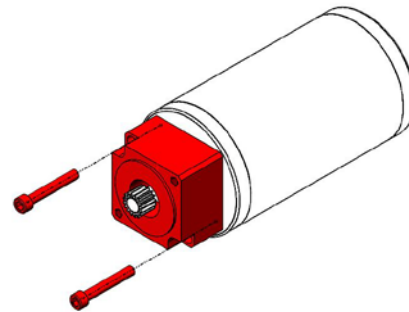
Step 2: Remove the two 10-32 x 1.750 Socket Head Screws from the CIM Sport.



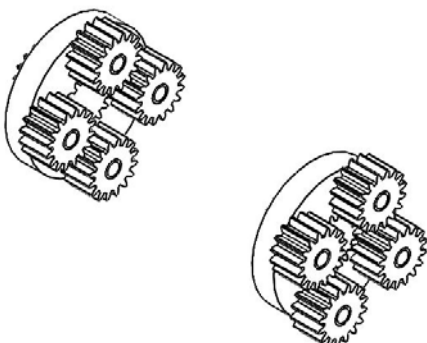
Step 3: Remove the Motor Input Block and the steel Thrust Washer. Set the Thrust Washer aside on a clean shop towel or paper towel.



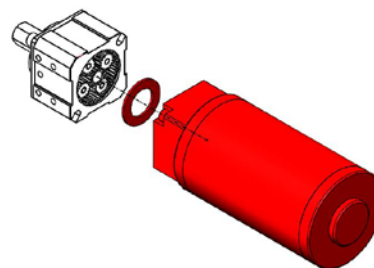
Step 4: Attach the Motor Input Block to the CIM Motor (with previously attached pinion) using the included 10-32x1250 Socket Head Screws. Be sure to install the Motor Input Block with the flat side against the motor.



Step 5: Be sure to add a pea-sized amount of included Red Tacky Grease (am-2768) to the gear teeth. If more than one stage is present, add grease to each stage.



Step 6: Reinstall the Thrust Washer into the CIM Sport onto the surface of the gears inside the gearbox. Insert the Motor Assembly into the gearbox, and gently turn the output shaft until the gears mesh.



Step 7: Once the gearbox is put together, reinstall the 10-32 x 1.750 Socket Head to secure the Motor Assembly.

