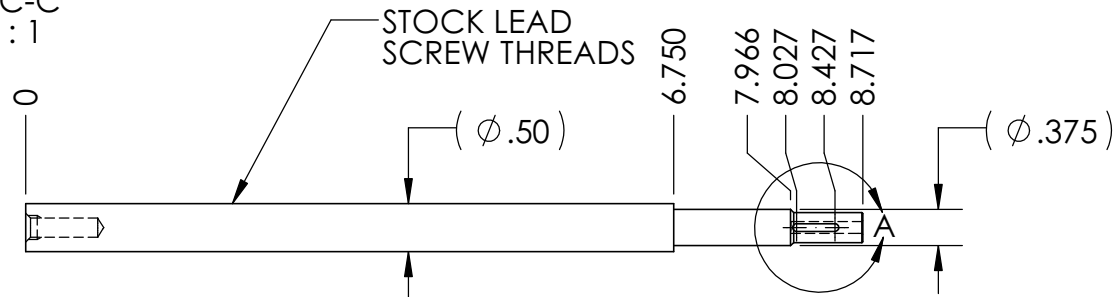
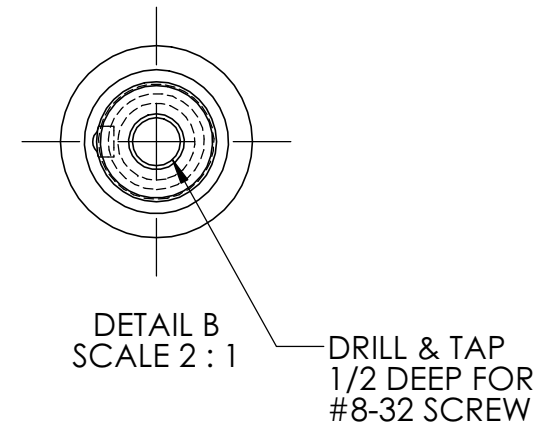
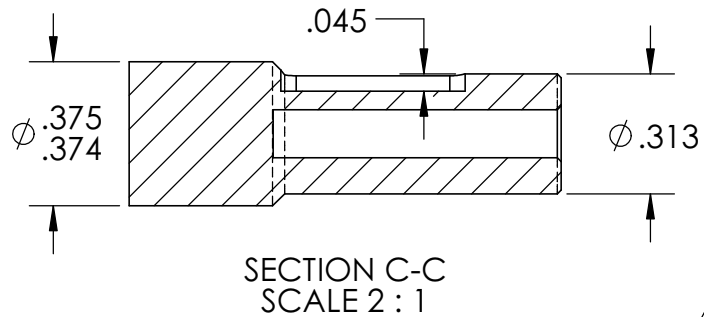
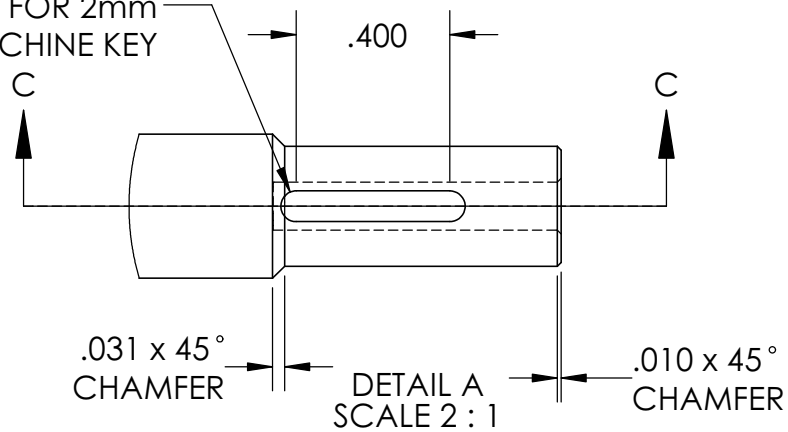


Ø.080 x 0.045 DEEP
FOR 2mm
MACHINE KEY

Rev2: More tolerance to 0.375/0.374 dia
Rev3: Removed e-clip grooves
Rev4: 12/2017 Removed boss, added 1/4-20 tapped hole on end



Ø.201
DRILL & TAP 3/4"
DEEP FOR 1/4-20
SCREW

PROPRIETARY AND CONFIDENTIAL
THE INFORMATION CONTAINED IN THIS DRAWING IS THE SOLE PROPERTY OF <INSERT COMPANY NAME HERE>. ANY REPRODUCTION IN PART OR AS A WHOLE WITHOUT THE WRITTEN PERMISSION OF <INSERT COMPANY NAME HERE> IS PROHIBITED.

		UNLESS OTHERWISE SPECIFIED:	NAME	DATE
		DIMENSIONS ARE IN INCHES	DRAWN	AB
		TOLERANCES:	CHECKED	10/2015
		FRACTIONAL: ± 0.01	ENG APPR.	
		ANGULAR: ± 0.1	MFG APPR.	
		TWO PLACE DECIMAL ± 0.01	Q.A.	
		THREE PLACE DECIMAL ± 0.005	COMMENTS:	
		INTERPRET GEOMETRIC TOLERANCING PER:		
		MATERIAL		
		4140 Steel Lead Screw		
NEXT ASSY	USED ON	FINISH		
		Deburred		
APPLICATION		DO NOT SCALE DRAWING		



TITLE:
**DART 6
Lead Screw**

SIZE A	DWG. NO. am-3270	REV 4
------------------	----------------------------	-----------------

SCALE:	WEIGHT:	SHEET 1 OF 1
--------	---------	--------------