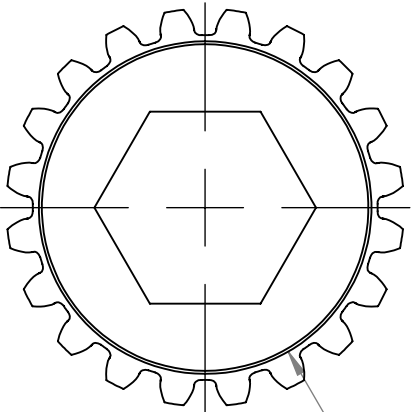
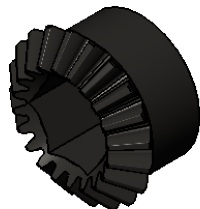
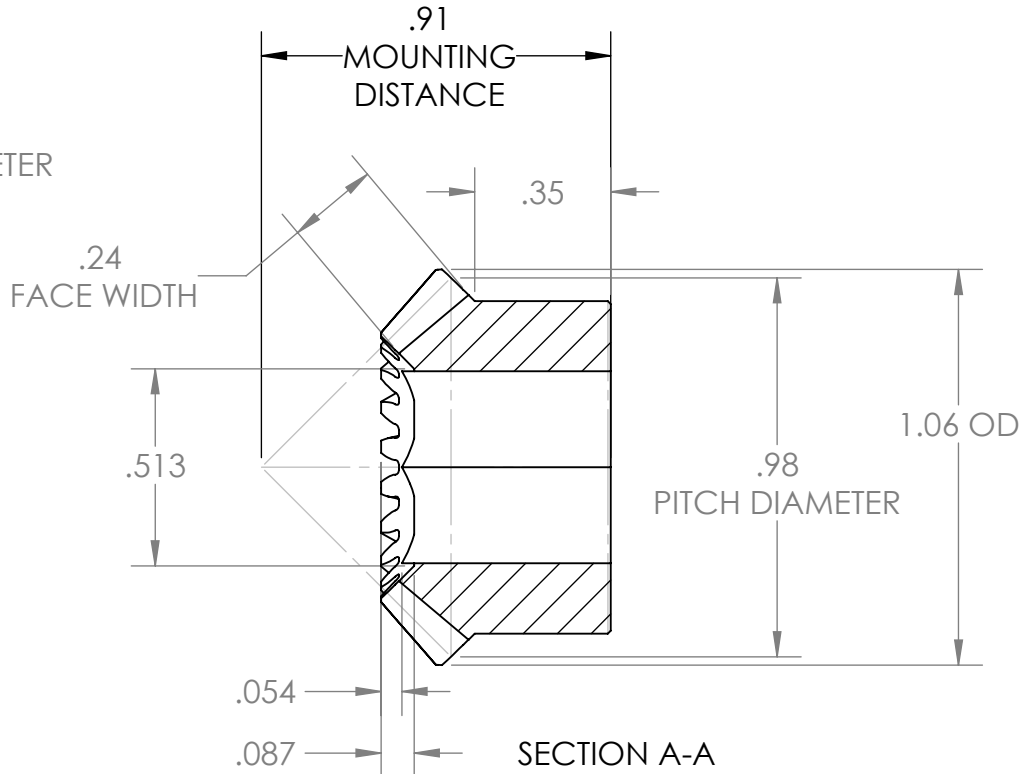
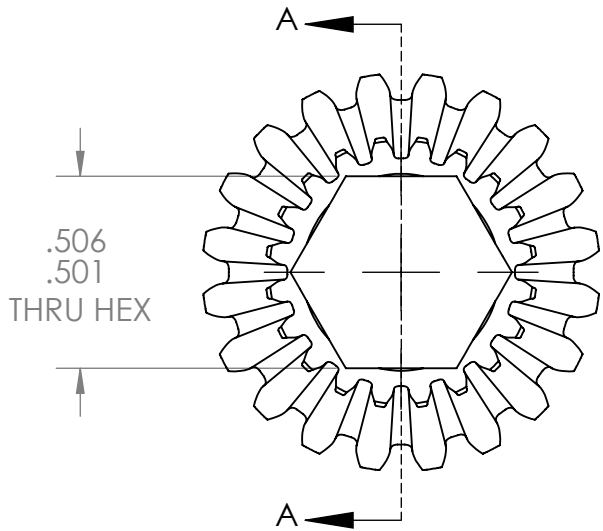


REVISION HISTORY			
REV.	DESCRIPTION	DATE	DRAWN BY
1	ORIGINAL PRINT	9/15/2017	KARL NEPOMUCENO



Ø .87  
HUB DIAMETER



UNLESS OTHERWISE SPECIFIED:		COMMENTS:	
<b>DIMENSIONS ARE IN INCHES</b>		DUAL DIMENSIONS ARE IN MILLIMETERS.	
TOLERANCES:		BREAK ALL SHARP EDGES.	
FRACTIONAL	±1/16	MODULE: 1.25	
ANGULAR: MACH	±1°	NO. OF TEETH: 20	
ANGULAR: BEND	±5°	PRESSURE ANGLE: 20°	
ONE PLACE DECIMAL	±0.1		
TWO PLACE DECIMAL	±0.01		
THREE PLACE DECIMAL	±0.005		
FOUR PLACE DECIMAL	±0.0005		
MATERIAL	AISI 1045 STEEL	NAME	DATE
FINISH	DEBURRED	CHECKED	
		ENG APPR.	
		MFG APPR.	
		Q.A.	



TITLE:  
1.25 Mod - 20T MITER GEAR  
500 HEX BORE

SIZE	DWG. NO.	REV
<b>A</b>	am-3772	<b>1</b>
SCALE: 2:1		SHEET 1 OF 1