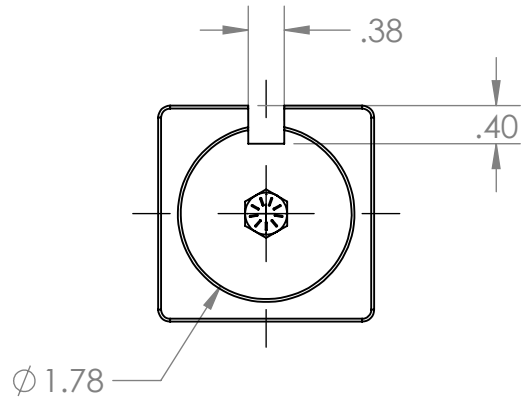
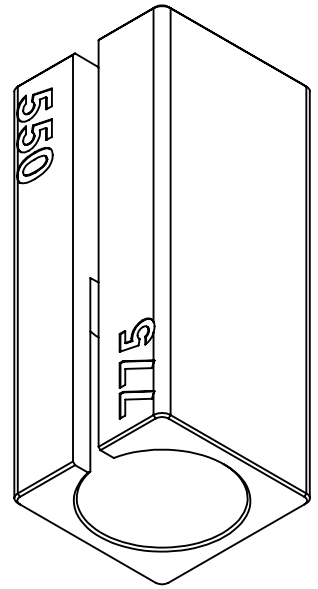
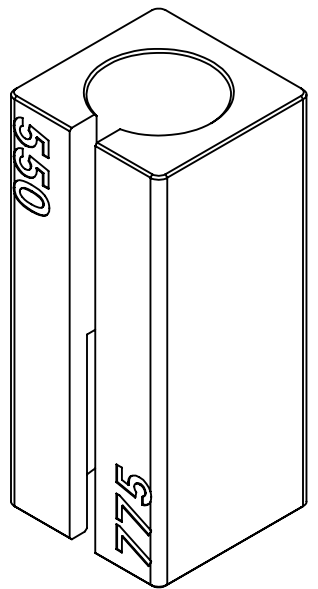
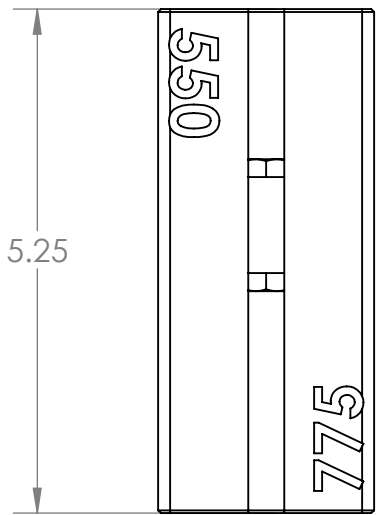
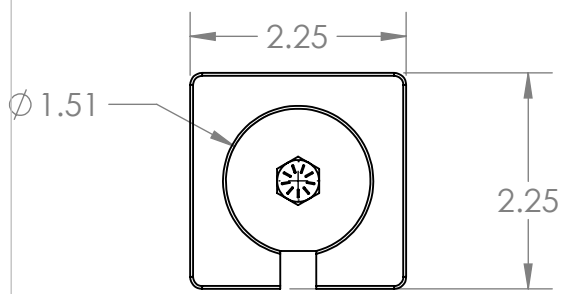


Rev	Description of Changes
1	Original Print



NOTES:

550/775 CLASS MOTOR PINION PRESS TOOL FOR USE WITH AN ARBOR PRESS

ANODIZED SATIN BLUE


1/4"-20 x 1/2" GRADE 5 HEX CAP SCREW USED TO SUPPORT BACK SHAFT WHILE PRESSING PINION ONTO SHAFT

ENGRAVED TEXT TO SHOW WHICH SIDE IS MEANT FOR WHICH MOTOR CLASS ENGRAVING STYLE SUBJECT TO CHANGE

FOR USE WITH AM-0912 OR AM-3775

SLOT ON SIDE TO ALLOW PRE-WIRED MOTORS TO STILL BE USED

AM-3826a DIFFERS FROM AM-3826 IN THAT THE a VERSION HAS A .75" DEEPER BORE FOR AN RS-775 CLASS MOTOR

UNLESS OTHERWISE SPECIFIED:		NAME	DATE	
DIMENSIONS ARE IN INCHES		DRAWN	JJK	
TOLERANCES:		CHECKED		
FRACTIONAL ±		ENG APPR.		
ANGULAR: MACH ± BEND ±5°		MFG APPR.	JJK	8/28/18
TWO PLACE DECIMAL ±0.010		Q.A.		
THREE PLACE DECIMAL ±0.005		COMMENTS:		
INTERPRET GEOMETRIC TOLERANCING PER:		Dual dimensions are in millimeters		
MATERIAL		TITLE:		
6061-T6		550 and 775 Pinion Press Tool		
FINISH		SIZE DWG. NO.		REV
SEE NOTES		A am-3826a		1
DO NOT SCALE DRAWING		SCALE: 1:2 WEIGHT:		SHEET 1 OF 1