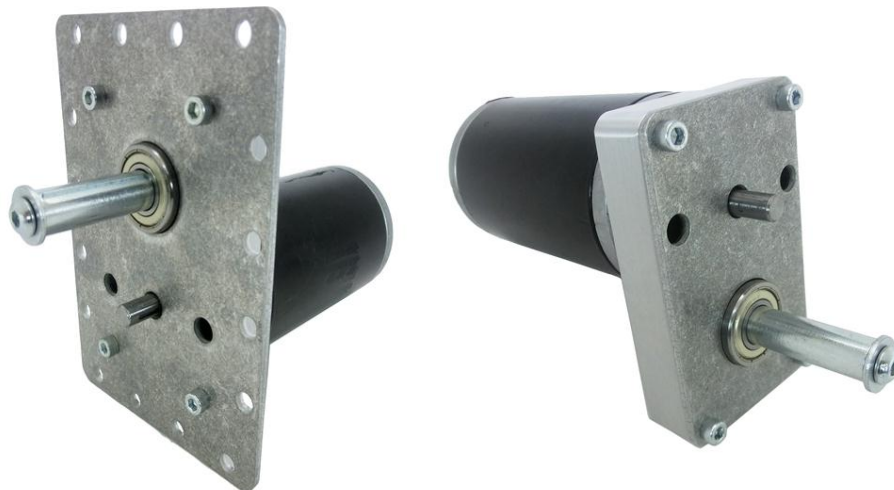
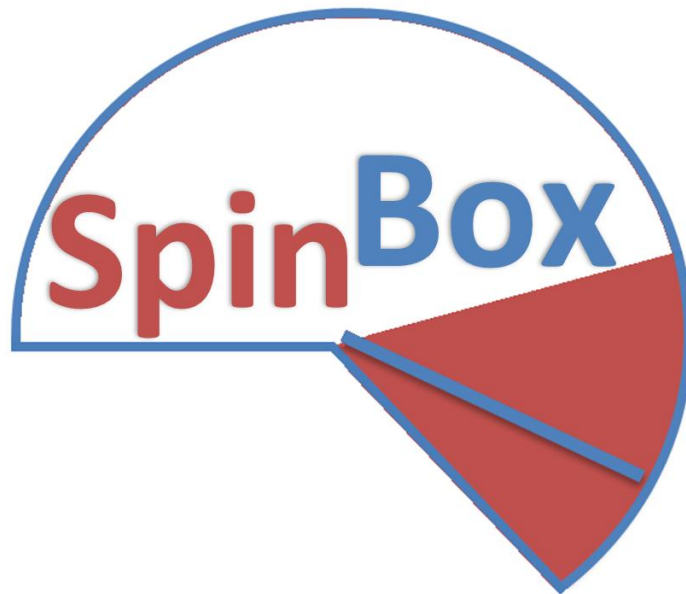


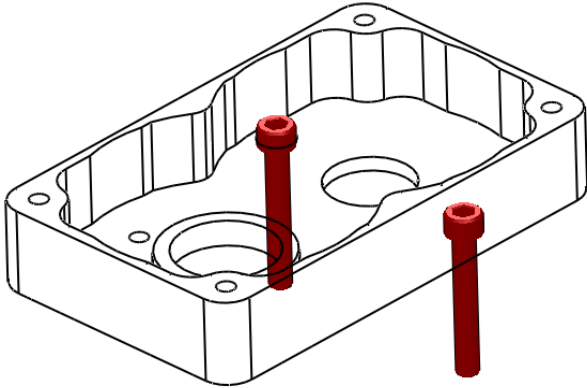
SpinBox

Encoder Hardware Kit

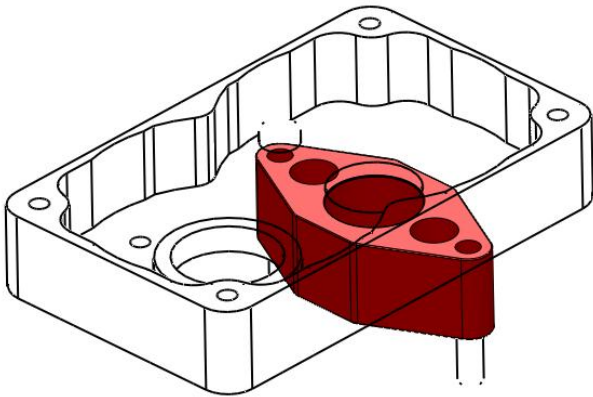
Assembly Guide



Step 1: Put **TWO** 10-32 x 1.25" Screws (am-1041) into the SpinBox Housing (am-2456) mounting holes.



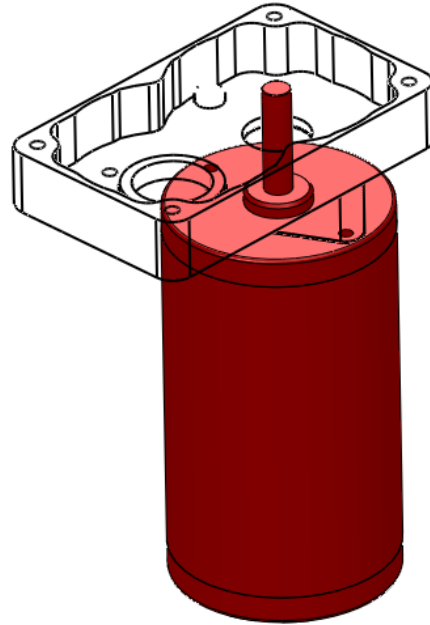
Step 2: Slide the CIM Spacer (am-0555) in place through the screws.



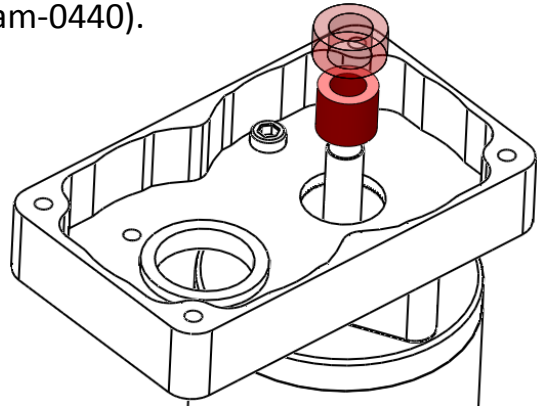
Note:

The CIM Spacer allows for an encoder to fit onto the housing without any interference.

Step 3: Line the CIM Motor (am-0255) into place and tighten down the screws.



Step 4: Place the 0.475" Long Nylon Spacer (am-0925) onto the CIM Motor shaft followed by the 0.375" Long Spacer (am-0440).



Tip:

Place the machine key after the spacers have been inserted

****You may now continue with Step 4 on the **
standard SpinBox Assembly instructions**