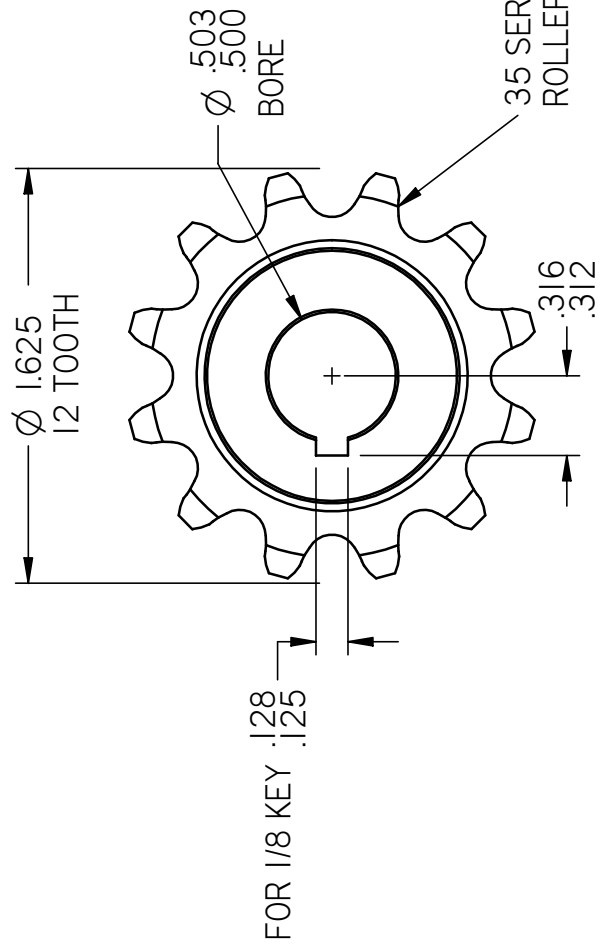
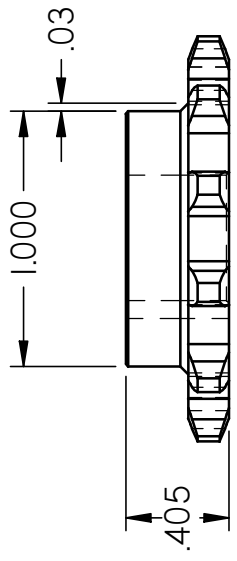


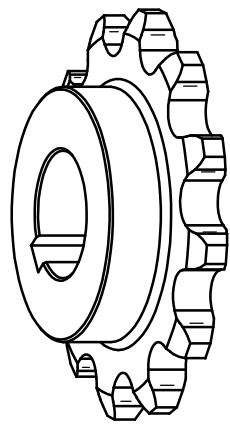
REVISION HISTORY

REV	DESCRIPTION	DATE	APPROVED



35 SERIES
ROLLER SPROCKET

"Material note"
Use Steel: 1018, 1215, 12L14



DRAWN	Andy Baker	05/29/07
MATERIAL	see note	
QUANTITY	1	
HEAT TREAT		
FINISH	Nickel or zinc plate	
UNLESS OTHERWISE SPECIFIED DIMENSIONS ARE IN INCHES ANGLES ±0.5° 2 PL ±0.01" 3 PL ±0.005"		
ANDYMARKBIZ STANDARD SOLUTIONS FOR COMPETITION ROBOTS S35-12H SPROCKET		
SIZE	DWG NO	REV
A3	S35-12H	1
FILE NAME: S35-12h.sft	SCALE:	WEIGHT:
		SHEET 1 OF 1