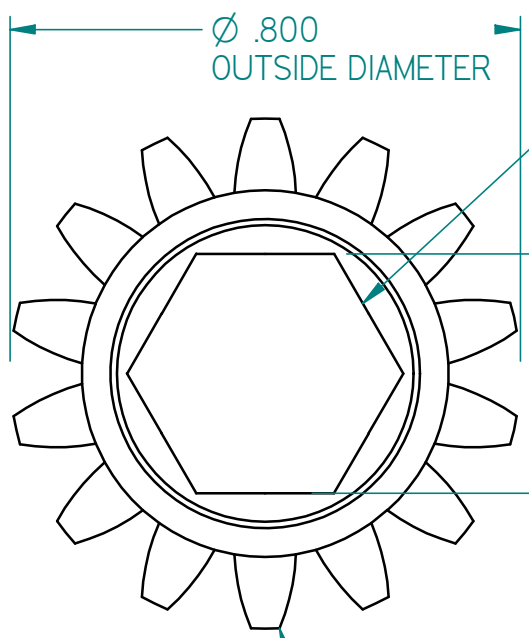


REVISION HISTORY			
REV	DESCRIPTION	DATE	APPROVED

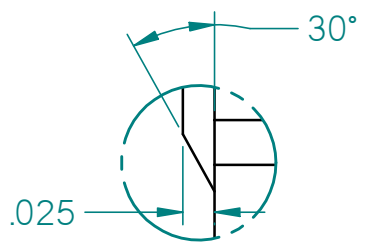


Ø .800
OUTSIDE DIAMETER

CLEAN CUT REQUIRED
SO NO BURRS REMAIN
BETWEEN GEAR TEETH

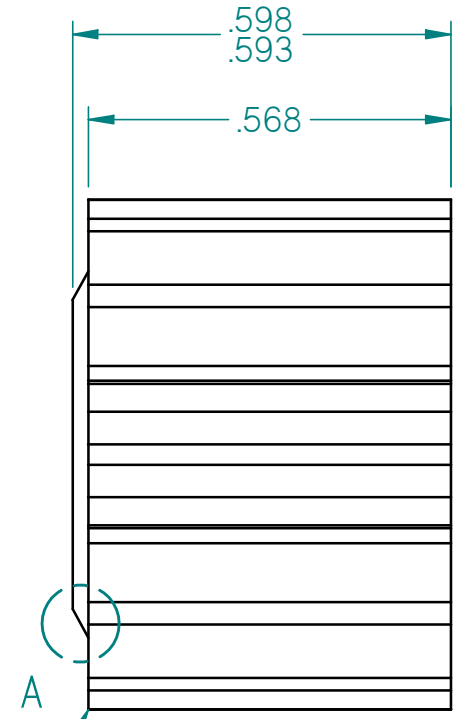
.379
.375

14 TOOTH, 20 DP, 14.5 PA
SPUR GEAR, 4140 STEEL



DETAIL A

CLEAN CUT REQUIRED
SO NO BURRS REMAIN
BETWEEN GEAR TEETH



.598
.593

.568



DRAWN	Andy Baker	05/05/09	ANDYMARK.BIZ STANDARD SOLUTIONS FOR COMPETITION ROBOTS		
MATERIAL	4140 Steel				
QUANTITY	1		TITLE SMALL CLUSTER GEAR		
HEAT TREAT			SIZE A3	DWG NO Toughbox_d08	REV 2
FINISH	Tumble		FILE NAME: Toughbox_d08.dft		
UNLESS OTHERWISE SPECIFIED DIMENSIONS ARE IN INCHES ANGLES ±0.5° 2 PL ±0.01" 3 PL ±0.005"			SCALE:	WEIGHT:	SHEET 1 OF 1