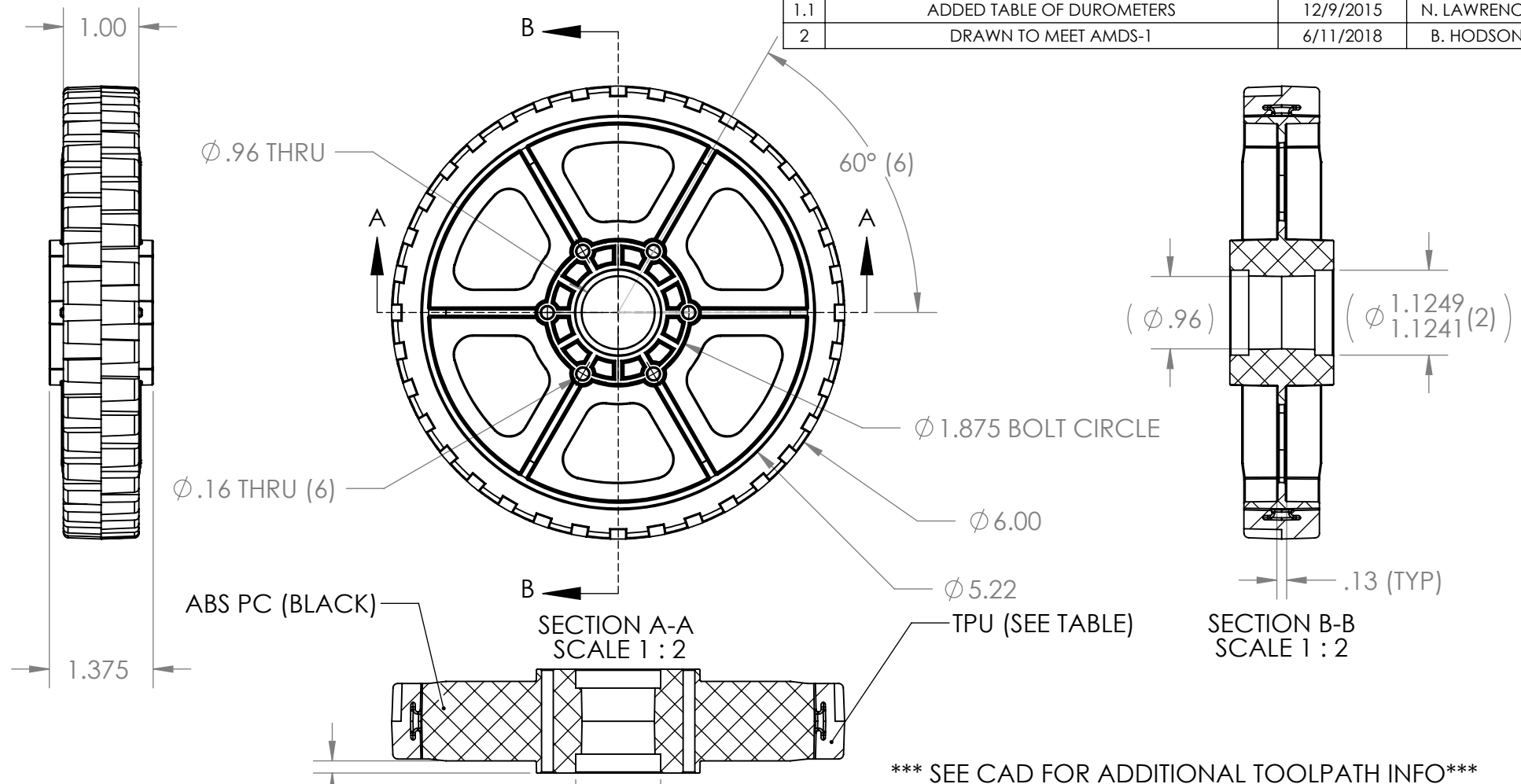


REVISION HISTORY			
REV.	DESCRIPTION	DATE	DRAWN BY
1	ORIGINAL PRINT	9/13/2011	M. KOORS
1.1	ADDED TABLE OF DUROMETERS	12/9/2015	N. LAWRENCE
2	DRAWN TO MEET AMDS-1	6/11/2018	B. HODSON



\*\*\* SEE CAD FOR ADDITIONAL TOOLPATH INFO\*\*\*

UNLESS OTHERWISE SPECIFIED:		COMMENTS:	
<b>DIMENSIONS ARE IN INCHES</b>		DUAL DIMENSIONS ARE IN MILLIMETERS.	
TOLERANCES:		BREAK ALL SHARP EDGES	
FRACTIONAL	±1/16	2° DRAFT APPLIED TO MOST SURFACES FOR MOLD RELEASE	
ANGULAR: MACH	±1°	CHECKED	NAME NL DATE 6/25/18
ANGULAR: BEND	±5°	ENG APPR.	
ONE PLACE DECIMAL	±0.1	MFG APPR.	
TWO PLACE DECIMAL	±0.01	Q.A.	
THREE PLACE DECIMAL	±0.005		
FOUR PLACE DECIMAL	±0.0005		
MATERIAL	ABS & TPU		
FINISH	DEBURRED		
DO NOT SCALE DRAWING			



TITLE:  
**6IN HIGRIP WHEEL**

DUROMETER VARIATIONS		
TREAD COLOR	TREAD DUROEMETER	PART NUMBER
WHITE	77A	am-0940a
BLACK	65A	am-0940a_blk
BLUE	50A	am-0940a_blue

SIZE	DWG. NO.	REV
<b>A</b>	<b>am-0940a</b>	<b>2</b>
SCALE: 1:1	WEIGHT:	SHEET 1 OF 1