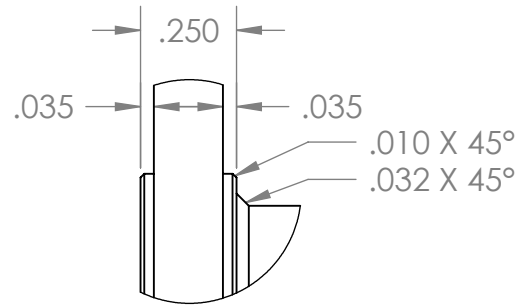
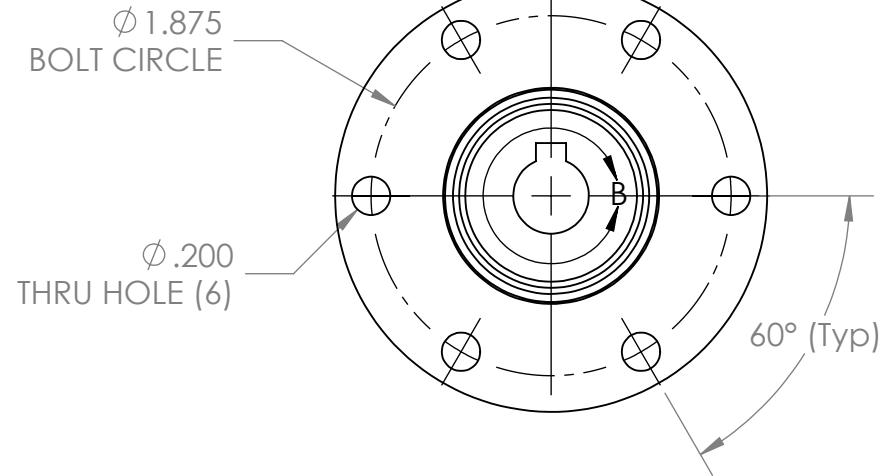
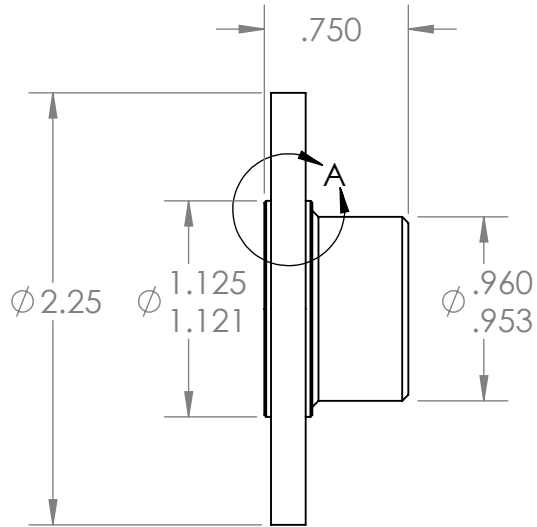
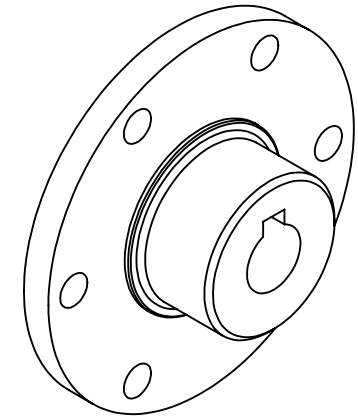


DETAIL B
SCALE 2 : 1



DETAIL A
SCALE 2 : 1



| UNLESS OTHERWISE SPECIFIED: | | NAME | DATE | AndyMark.com Standard Solutions for Competition Robots | |
|--------------------------------------|--|-----------|------|---|---------------------------------|
| DIMENSIONS ARE IN INCHES | | DRAWN | DB | 9/6/13 | TITLE: 10mm Key Hub |
| TOLERANCES: | | CHECKED | | | |
| FRACTIONAL ± 0.01 | | ENG APPR. | | | |
| ANGLE: MACH ± 0.1 BEND ± 0.5 | | MFG APPR. | | | |
| TWO PLACE DECIMAL ± 0.01 | | Q.A. | | | SIZE DWG. NO. REV |
| THREE PLACE DECIMAL ± 0.005 | | COMMENTS: | | | A AM-0985 3 |
| INTERPRET GEOMETRIC TOLERANCING PER: | | | | | SCALE: 1:1 WEIGHT: SHEET 1 OF 1 |
| MATERIAL | | | | | |
| 6061 Aluminum | | | | | |
| FINISH | | | | | |
| Tumbled | | | | | |
| DO NOT SCALE DRAWING | | | | | |