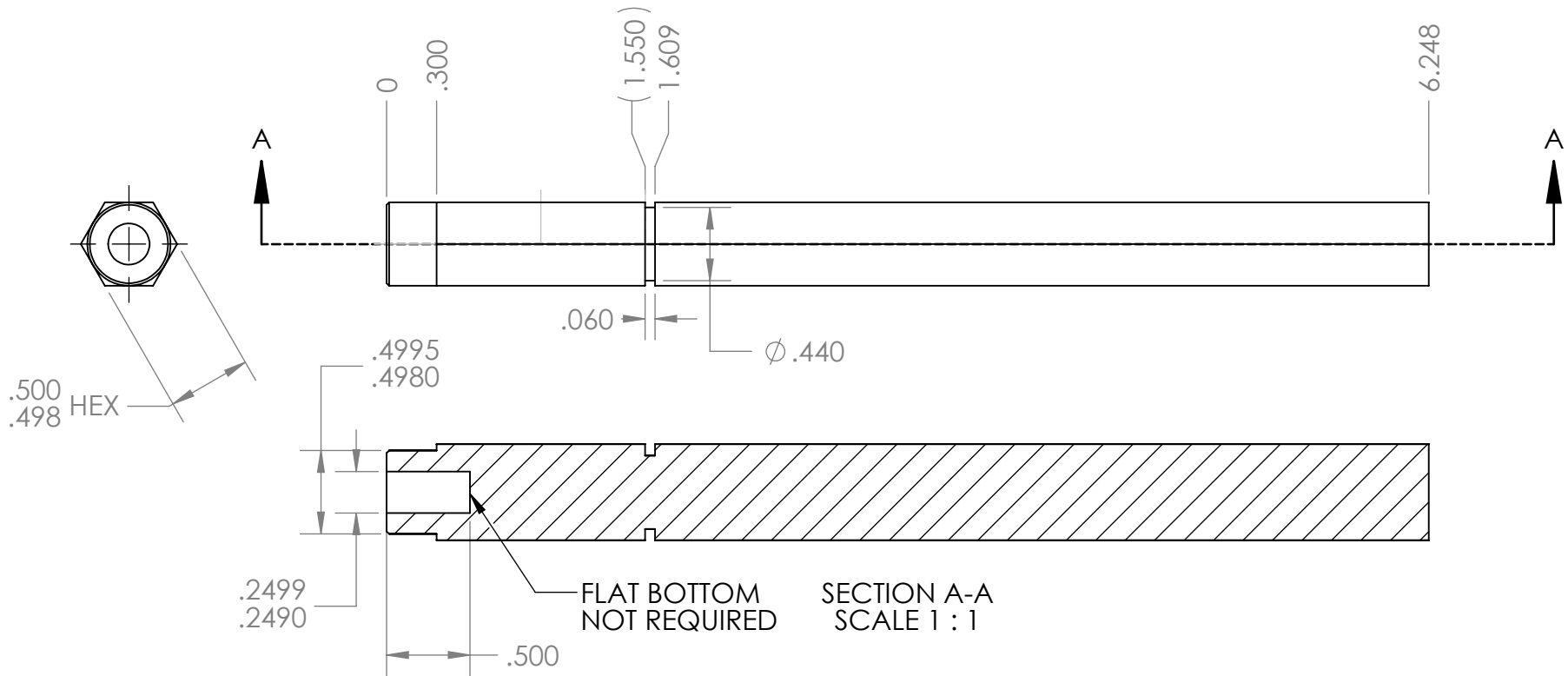
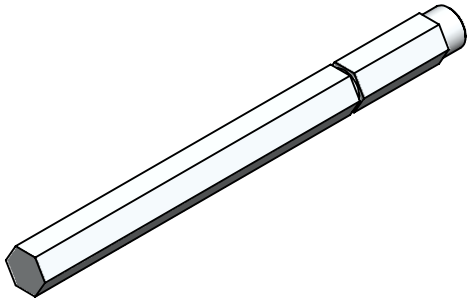



REVISION HISTORY			
REV.	DESCRIPTION	DATE	DRAWN BY
1	ORIGINAL PRINT	11/11/2013	D. BLAU
2	UPDATED TO AMDS-1	6/26/2018	A. MILLS



*** SEE CAD FOR ADDITIONAL TOOLPATH INFO***



UNLESS OTHERWISE SPECIFIED:		COMMENTS:			
DIMENSIONS ARE IN INCHES		DUAL DIMENSIONS ARE IN MILLIMETERS.			
TOLERANCES:		BREAK ALL SHARP EDGES		TITLE:	
FRACTIONAL	$\pm 1/16$			SS-HEX OUTPUT	
ANGULAR: MACH	$\pm 1^\circ$			SHAFT AM14U	
ANGULAR: BEND	$\pm 5^\circ$			SIZE	
ONE PLACE DECIMAL	± 0.1			DWG. NO.	
TWO PLACE DECIMAL	± 0.01			A am-2697	
THREE PLACE DECIMAL	± 0.005			REV	
FOUR PLACE DECIMAL	± 0.0005			2	
MATERIAL	7075-T6 ALUMINUM	CHECKED	NAME	DATE	SCALE: 1:2
FINISH	TUMBLLED	ENG APPR.	NL	7/3/18	WEIGHT:
DO NOT SCALE DRAWING		MFG APPR.			SHEET 1 OF 1
		Q.A.			