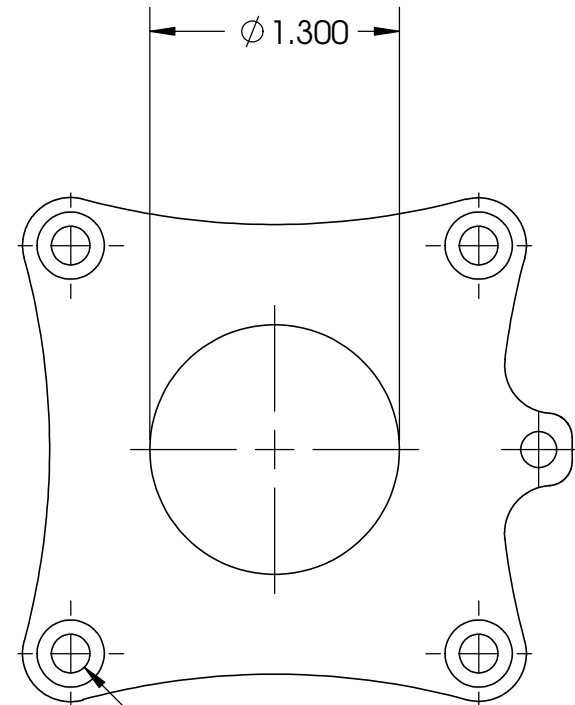
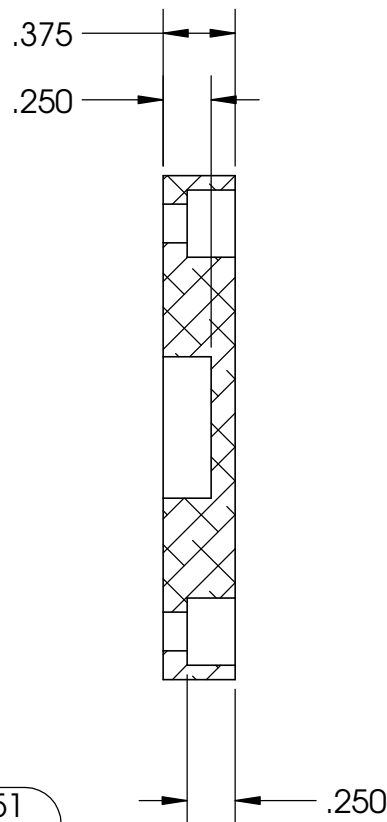
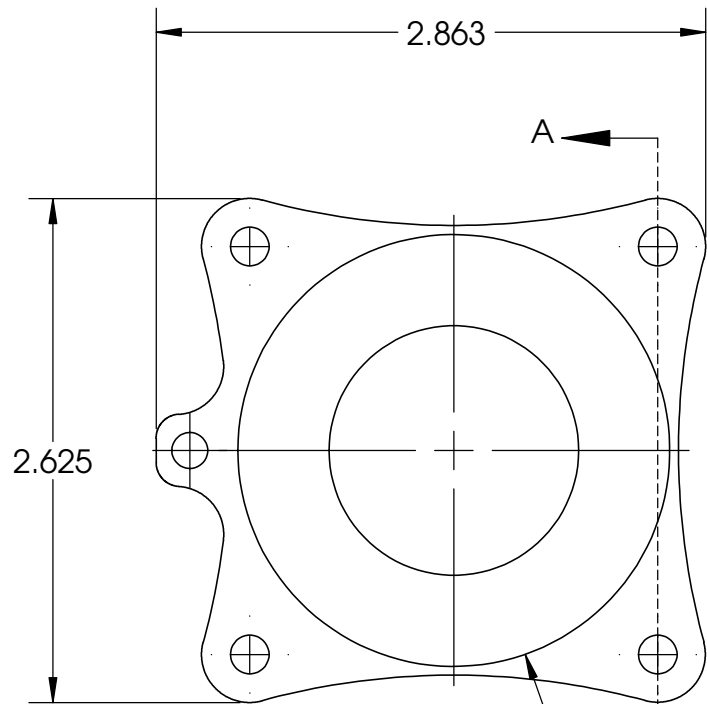


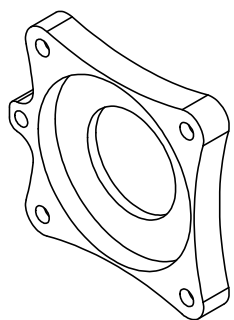
*** NOTE ***
 USE CAD GEOMETRY
 FOR GENERATION OF
 MILLING PATHS



Ø .201
 DRILL THRU & C'BORE
 FOR # 10-32 SCREW (4)

Ø 2.251
 2.249
 x 0.250 DEEP

SECTION A-A



PROPRIETARY AND CONFIDENTIAL
 THE INFORMATION CONTAINED IN THIS
 DRAWING IS THE SOLE PROPERTY OF
 <INSERT COMPANY NAME HERE>. ANY
 REPRODUCTION IN PART OR AS A WHOLE
 WITHOUT THE WRITTEN PERMISSION OF
 <INSERT COMPANY NAME HERE> IS
 PROHIBITED.

		UNLESS OTHERWISE SPECIFIED:	NAME	DATE
		DIMENSIONS ARE IN INCHES	DRAWN	AB
		TOLERANCES:	CHECKED	9/2014
		FRACTIONAL: ± 0.01	ENG APPR.	
		ANGULAR: ± 0.1	MFG APPR.	
		TWO PLACE DECIMAL ± 0.01	Q.A.	
		THREE PLACE DECIMAL ± 0.005	COMMENTS:	
		INTERPRET GEOMETRIC TOLERANCING PER:		
		MATERIAL		
		6061 Aluminum		
		FINISH		
		Tumbled		
NEXT ASSY	USED ON			
APPLICATION		DO NOT SCALE DRAWING		



TITLE:
**Swerve & Steer
 Bearing Plate**

SIZE A	DWG. NO. am-3016	REV 2
------------------	----------------------------	-----------------

SCALE:	WEIGHT:	SHEET 1 OF 1
--------	---------	--------------