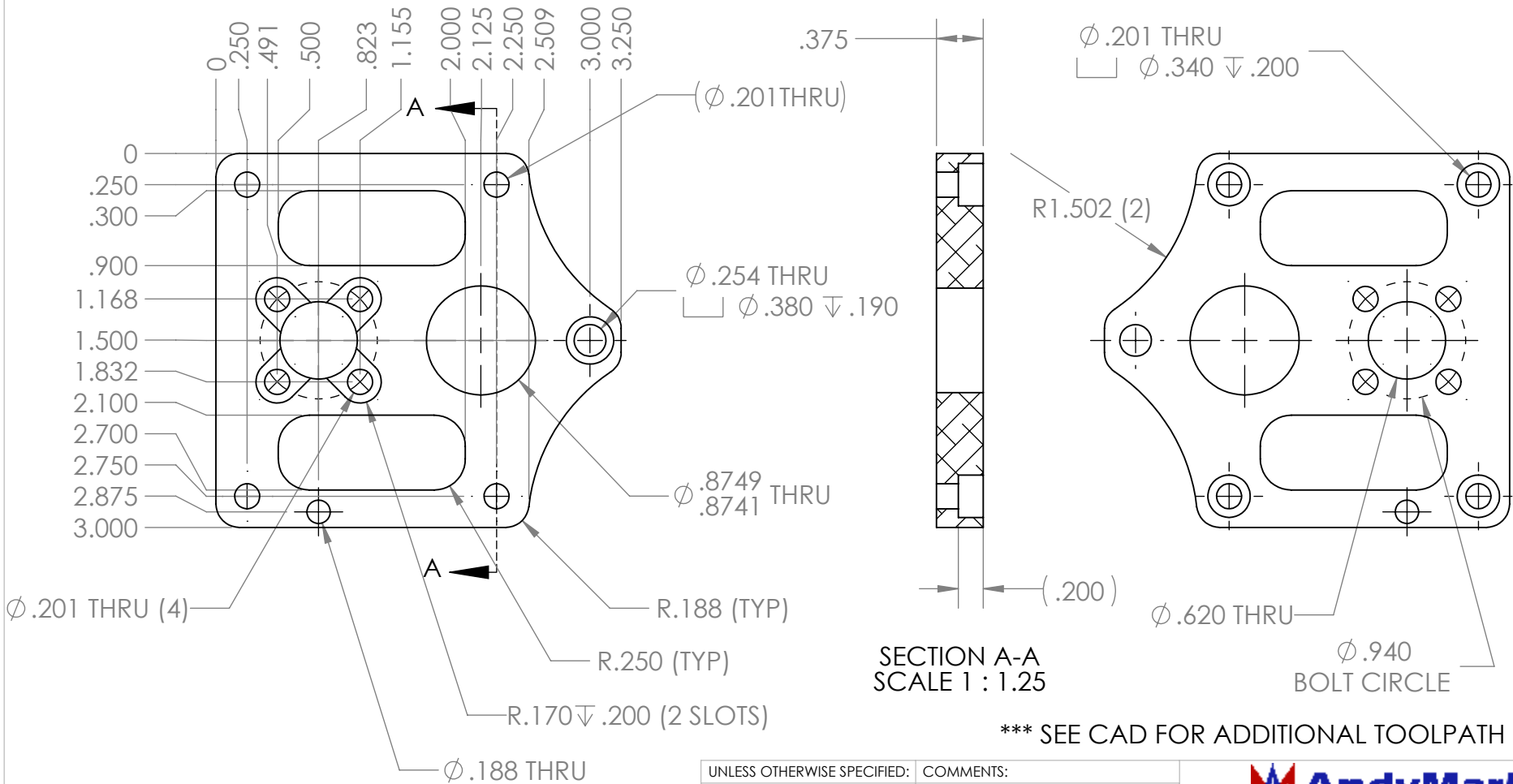



REVISION HISTORY			
REV.	DESCRIPTION	DATE	DRAWN BY
2.1	ORIGINAL PRINT	12/21/2018	D. BLAU
3	DRAWN TO MEET AMDS-1	5/10/2018	B. HODSON



\*\*\* SEE CAD FOR ADDITIONAL TOOLPATH INFO\*\*\*

UNLESS OTHERWISE SPECIFIED:		COMMENTS:					
<b>DIMENSIONS ARE IN INCHES</b>		DUAL DIMENSIONS ARE IN MILLIMETERS.					
TOLERANCES: FRACTIONAL ±1/16 ANGULAR: MACH ±1° ANGULAR: BEND ±5° ONE PLACE DECIMAL ±0.1 TWO PLACE DECIMAL ±0.01 THREE PLACE DECIMAL ±0.005 FOUR PLACE DECIMAL ±0.0005		BREAK ALL SHARP EDGES.		TITLE: <b>SWERVE AND STEER GEAR PLATE</b>			
MATERIAL <b>6061 ALUMINUM</b>		CHECKED	NAME NL	DATE 5/11/2018	SIZE <b>A</b>	DWG. NO. <b>am-3017</b>	REV <b>3</b>
FINISH <b>TUMBLLED</b>		MFG APPR.		SCALE: 1:1.25		SHEET 1 OF 1	
DO NOT SCALE DRAWING		Q.A.					