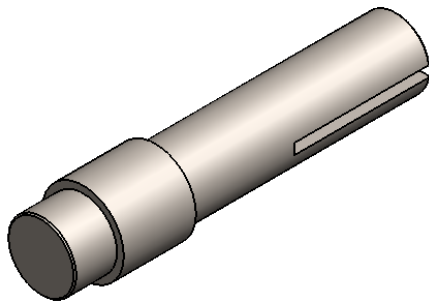
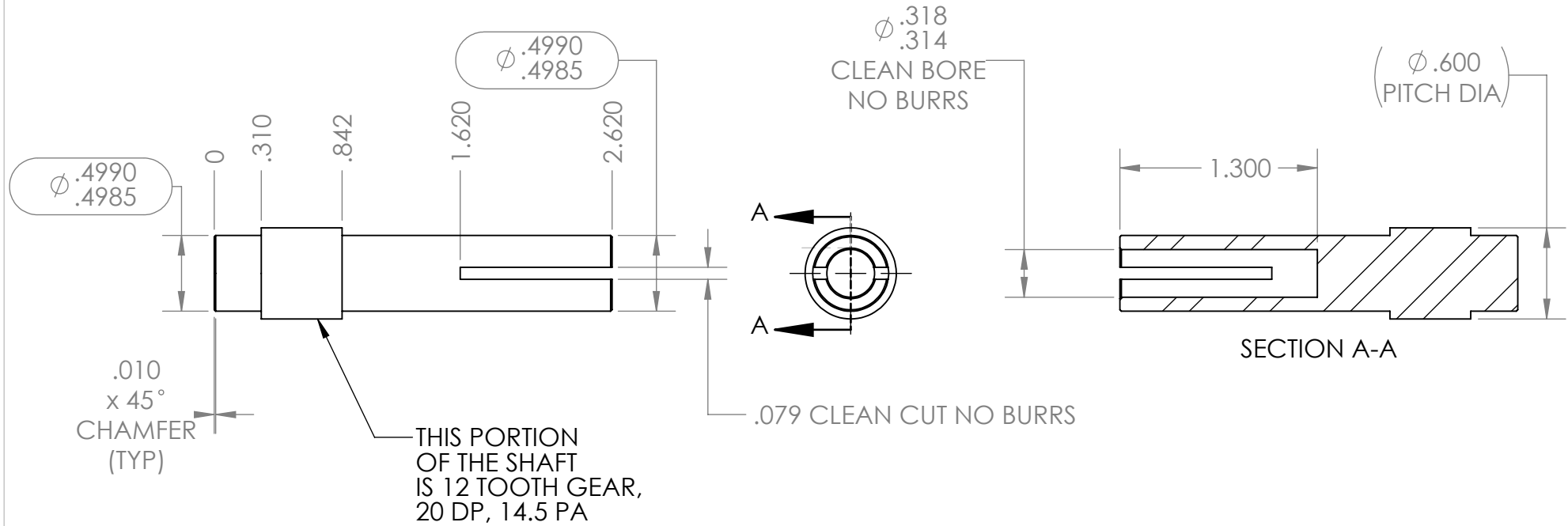



Rev	Description of Changes
1	Original Print
2	Slot changed to fit 2mm key, redrawn (JP 6/3/15)
3	Changed general outer dim tolerance



UNLESS OTHERWISE SPECIFIED:		NAME	DATE		
DIMENSIONS ARE IN INCHES		DRAWN	NL		
TOLERANCES:		CHECKED			Swerve & Steer 12 Tooth CIM Shaft
FRACTIONAL ±		ENG APPR.			
ANGULAR: MACH ± BEND ±5°		MFG APPR.			
TWO PLACE DECIMAL ±0.010		Q.A.			SIZE
THREE PLACE DECIMAL ±0.005		COMMENTS:	Dual dimensions are in millimeters		DWG. NO.
INTERPRET GEOMETRIC TOLERANCING PER:					REV
MATERIAL					A
4140 Steel Gear Stock					am-3018a
FINISH					3
Debur & Zinc Plate				SCALE: 1:1	WEIGHT:
DO NOT SCALE DRAWING					SHEET 1 OF 1