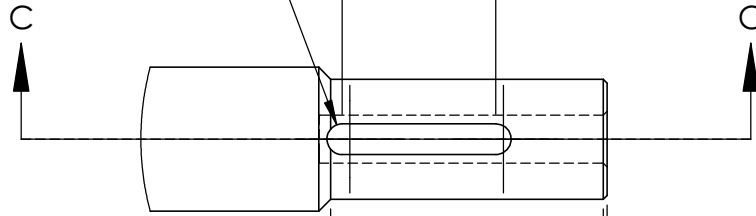


Ø .080 x 0.045 DEEP

FOR 2mm
MACHINE KEY

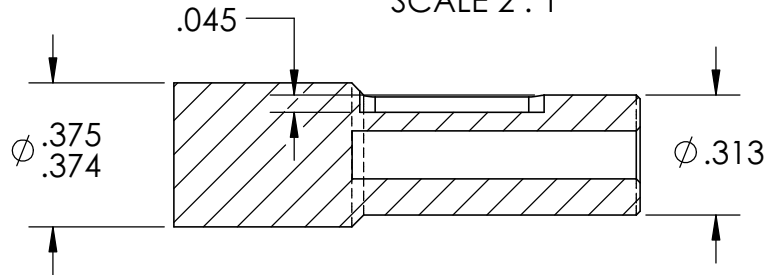
.400



.031 x 45°
CHAMFER

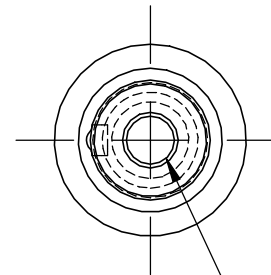
DETAIL A
SCALE 2 : 1

.010 x 45°
CHAMFER



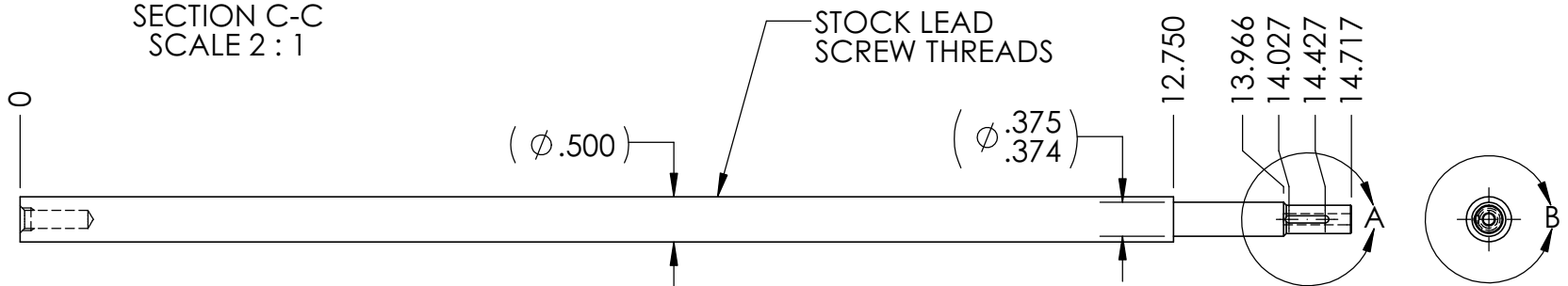
SECTION C-C
SCALE 2 : 1

Rev2: More tolerance to 0.375/0.374 dia
Rev3: Removed e-clip grooves
Rev4: 12/2017 Removed boss, added 1/4-20 tapped hole on end



DETAIL B
SCALE 2 : 1

DRILL & TAP
1/2 DEEP FOR
#8-32 SCREW



Ø .201
DRILL & TAP 3/4"
DEEP FOR 1/4-20
SCREW

PROPRIETARY AND CONFIDENTIAL
THE INFORMATION CONTAINED IN THIS
DRAWING IS THE SOLE PROPERTY OF
<INSERT COMPANY NAME HERE>. ANY
REPRODUCTION IN PART OR AS A WHOLE
WITHOUT THE WRITTEN PERMISSION OF
<INSERT COMPANY NAME HERE> IS
PROHIBITED.

| | | | | | |
|-------------|---------|---|-----------|------|---------|
| | | UNLESS OTHERWISE SPECIFIED: | | NAME | DATE |
| | | DIMENSIONS ARE IN INCHES | DRAWN | AB | 10/2015 |
| | | TOLERANCES: | CHECKED | | |
| | | FRACTIONAL: ± 0.01 | ENG APPR. | | |
| | | ANGULAR: ± 0.1 | MFG APPR. | | |
| | | TWO PLACE DECIMAL ± 0.01 | Q.A. | | |
| | | THREE PLACE DECIMAL ± 0.005 | COMMENTS: | | |
| | | INTERPRET GEOMETRIC TOLERANCING PER: | | | |
| | | MATERIAL | | | |
| | | 4140 Steel Lead Screw | | | |
| | | FINISH | | | |
| | | Deburred | | | |
| NEXT ASSY | USED ON | | | | |
| APPLICATION | | DO NOT SCALE DRAWING | | | |

AndyMark

TITLE:
**DART 12
Lead Screw**

| | | |
|------------------|----------------------------|-----------------|
| SIZE A | DWG. NO. am-3257 | REV 4 |
|------------------|----------------------------|-----------------|

| | | |
|--------|---------|--------------|
| SCALE: | WEIGHT: | SHEET 1 OF 1 |
|--------|---------|--------------|