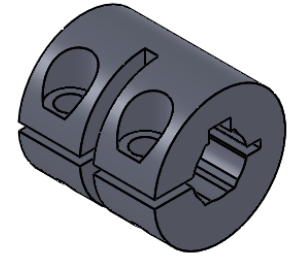
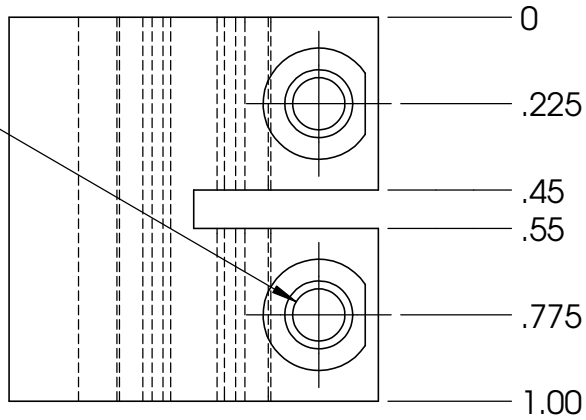
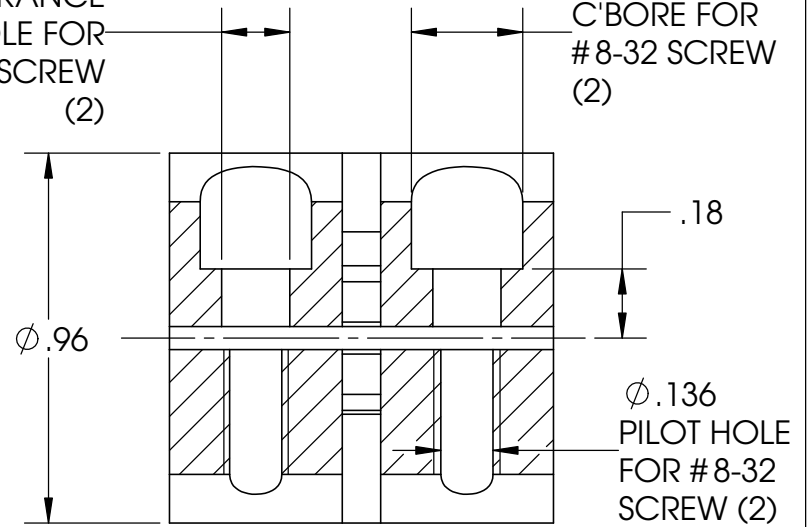


Ø .136 DRILL THRU,  
TAP BOTTOM SIDE  
FOR #8-32, C'BORE  
TOP SIDE (2)

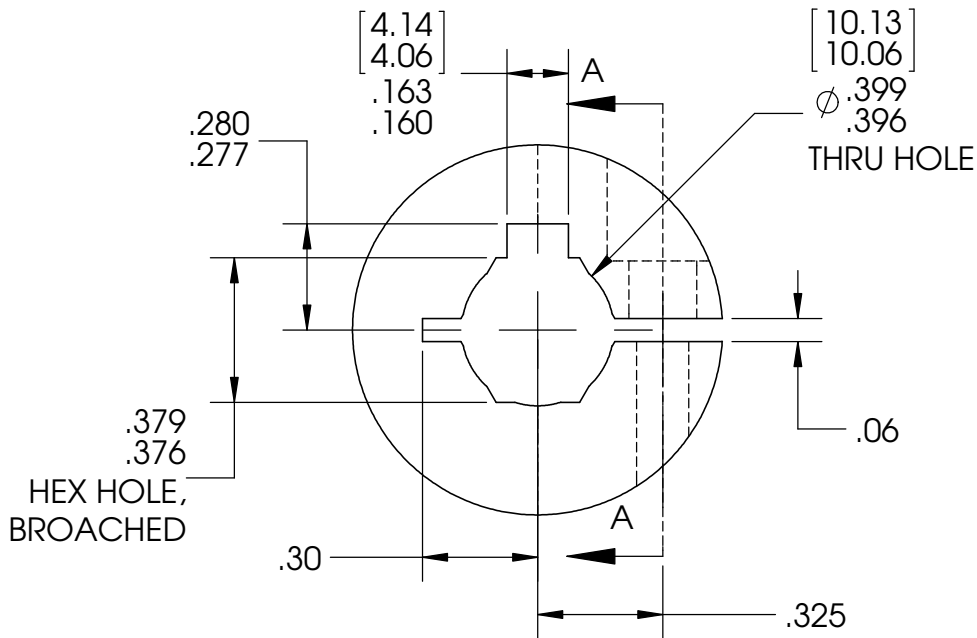


Ø .177  
CLEARANCE  
HOLE FOR  
#8-32 SCREW  
(2)

Ø .290  
C'BORE FOR  
#8-32 SCREW  
(2)



SECTION A-A



HEX HOLE,  
BROACHED

**PROPRIETARY AND CONFIDENTIAL**

THE INFORMATION CONTAINED IN THIS DRAWING IS THE SOLE PROPERTY OF <INSERT COMPANY NAME HERE>. ANY REPRODUCTION IN PART OR AS A WHOLE WITHOUT THE WRITTEN PERMISSION OF <INSERT COMPANY NAME HERE> IS PROHIBITED.

		UNLESS OTHERWISE SPECIFIED:		NAME	DATE
		DIMENSIONS ARE IN INCHES	DRAWN	AB	9/2016
		TOLERANCES:	CHECKED		
		FRACTIONAL: ± 0.01	ENG APPR.		
		ANGULAR: ± 0.1	MFG APPR.		
		TWO PLACE DECIMAL ± 0.01	Q.A.		
		THREE PLACE DECIMAL ± 0.005	COMMENTS:		
		INTERPRET GEOMETRIC TOLERANCING PER:			
		MATERIAL			
		6061 Aluminum			
		FINISH			
		Tumble			
NEXT ASSY	USED ON				
APPLICATION		DO NOT SCALE DRAWING			



TITLE:  
**PG-Hex  
Coupling**

SIZE <b>A</b>	DWG. NO. <b>am-3410</b>	REV <b>3</b>
SCALE:	WEIGHT:	SHEET 1 OF 1