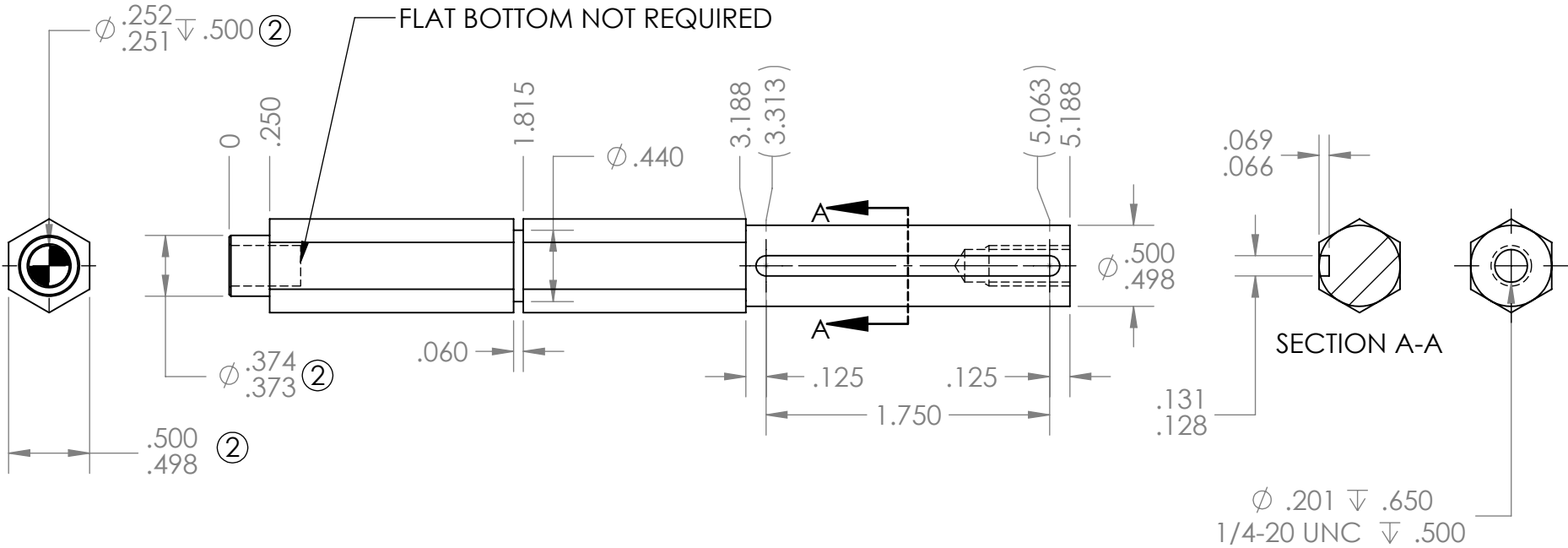
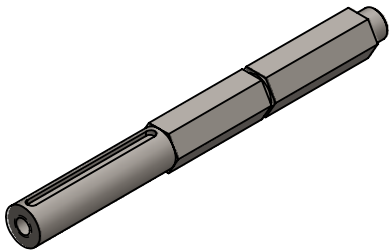



REVISION HISTORY			
REV.	DESCRIPTION	DATE	DRAWN BY
1	ORIGINAL PRINT	11/22/16	N. LAWRENCE
2	UPDATED FEATURES SIZES AND TOLERANCES	2/21/2018	C. THEISS
3	UPDATED TO AMDS-1	7/2/2018	A. MILLS



*** SEE CAD FOR ADDITIONAL TOOLPATH INFO***



UNLESS OTHERWISE SPECIFIED:		COMMENTS:				
DIMENSIONS ARE IN INCHES		DUAL DIMENSIONS ARE IN MILLIMETERS.				
TOLERANCES: FRACTIONAL ±1/16 ANGULAR: MACH ±1° ANGULAR: BEND ±5° ONE PLACE DECIMAL ±0.1 TWO PLACE DECIMAL ±0.01 THREE PLACE DECIMAL ±0.005 FOUR PLACE DECIMAL ±0.0005		BREAK ALL SHARP EDGES		3 STAGE EVO SHIFTER SHORT KEYED OUTPUT SHAFT		
MATERIAL 4140 STEEL		NAME	DATE	SIZE	DWG. NO.	REV
FINISH ZINC PLATED		CHECKED	NL	6/27/18	A	am-3521
DO NOT SCALE DRAWING		ENG APPR.				3
		MFG APPR.				
		Q.A.			SCALE: 1:1	WEIGHT:
						SHEET 1 OF 1