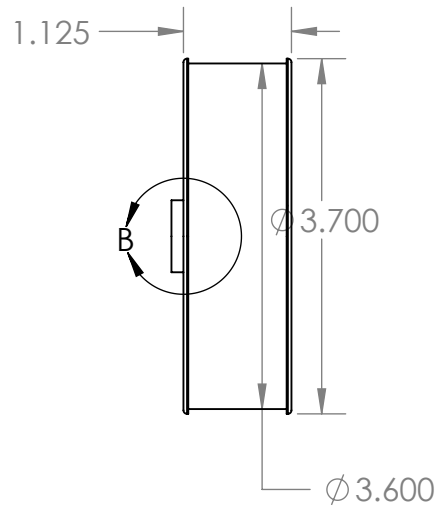
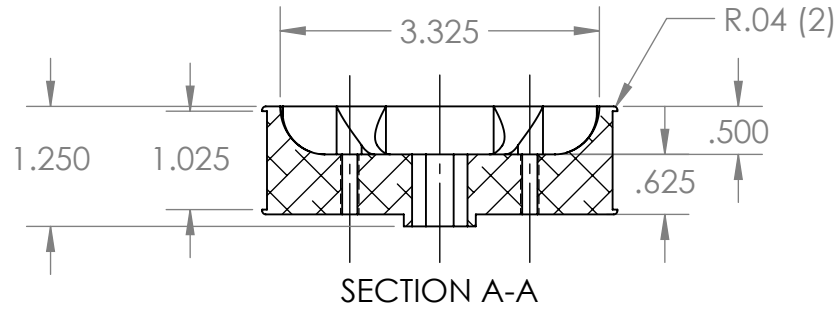
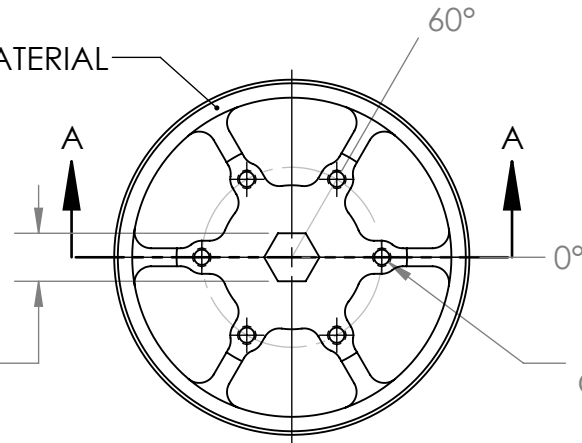


DETAIL B
SCALE 1 : 1

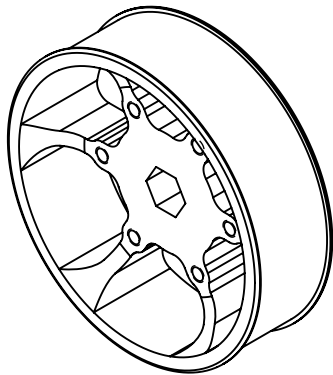


ex-3608
RAW MATERIAL

.506
.501
HEX THRU ALL
TIMED AS SHOWN



6X ϕ .159 THRU ALL
10-32 UNF THRU ALL
ON A 1.875 BOLT CIRCLE
TIMED AS SHOWN



SEE CAD FOR ADITIONAL TOOLPATH INFORMATION

UNLESS OTHERWISE SPECIFIED:		NAME	DATE
DIMENSIONS ARE IN INCHES		DRAWN	KS 6/7/17
TOLERANCES:		CHECKED	NM 10/24/17
FRACTIONAL $\pm 1/32$		ENG APPR.	
ANGULAR: MACH $\pm 1^\circ$ BEND $\pm 5^\circ$		MFG APPR.	
ONE PLACE DECIMAL ± 0.1		Q.A.	
TWO PLACE DECIMAL ± 0.01		COMMENTS:	
THREE PLACE DECIMAL ± 0.005		DUAL DIMENSIONS ARE IN MILLIMETERS.	
INTERPRET GEOMETRIC TOLERANCING PER:			
MATERIAL			
6061-T6 ALUMINUM			
FINISH			
TUMBLER			
DO NOT SCALE DRAWING			



TITLE:
**4" Perf. Wheel
.500" Hex Bore**

SIZE	DWG. NO.	REV
A	am-3608	2

SCALE: 1:2 WEIGHT: SHEET 1 OF 1