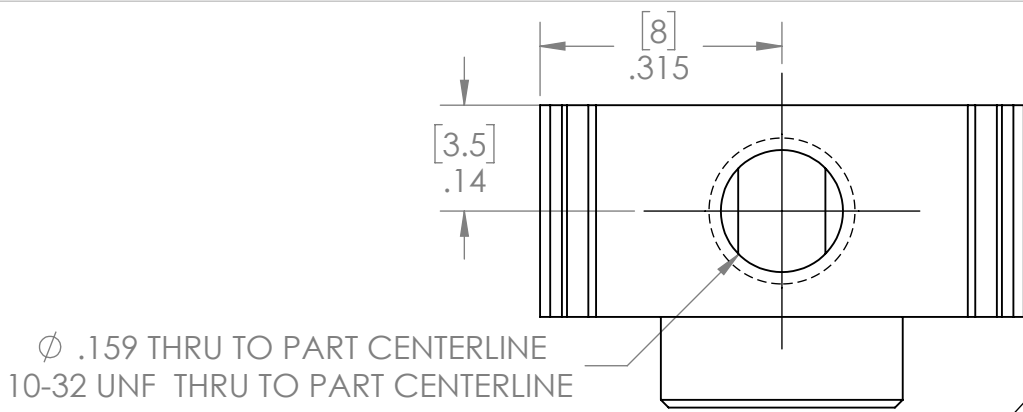


REVISION HISTORY			
REV.	DESCRIPTION	DATE	DRAWN BY
1	ORIGINAL PRINT	7/27/2017	T. NGO
2	DRAWN TO MEET AMDS-1	7/9/2018	B. HODSON



$\phi$  .159 THRU TO PART CENTERLINE  
10-32 UNF THRU TO PART CENTERLINE

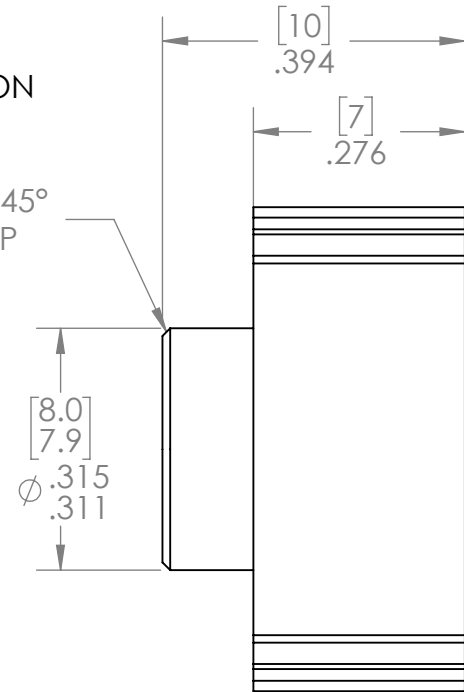
[16]  
 $\phi$  .630  
BOLT CIRCLE

[5.03]  
[5.08]  
.198  
.200  
HEX THRU  
TIMED AS SHOWN

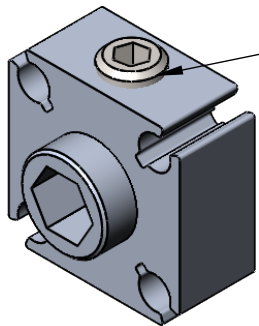
$\phi$  .117 FOR 6-32  
SELF-THREADING SCREW

EX-3215 EXTRUSION

.01 X 45°  
TYP



\*\*\* SEE CAD FOR ADDITIONAL TOOLPATH INFO\*\*\*



10-32 x 0.25 SET SCREW  
CUP POINT

UNLESS OTHERWISE SPECIFIED:		COMMENTS:	
<b>DIMENSIONS ARE IN INCHES</b>		DUAL DIMENSIONS ARE IN MILLIMETERS.	
TOLERANCES:		BREAK ALL SHARP EDGES	
FRACTIONAL	$\pm 1/16$		
ANGULAR: MACH	$\pm 1^\circ$		
ANGULAR: BEND	$\pm 5^\circ$		
ONE PLACE DECIMAL	$\pm 0.1$		
TWO PLACE DECIMAL	$\pm 0.01$		
THREE PLACE DECIMAL	$\pm 0.005$		
FOUR PLACE DECIMAL	$\pm 0.0005$		
MATERIAL	6105-T5 ALUMINUM	NAME	DATE
FINISH	TUMBLER	CHECKED	NL 7/23/18
		ENG APPR.	
		MFG APPR.	
		Q.A.	



TITLE:

5MM HEX  
SINGLE BOSS NUB

SIZE	DWG. NO.	REV
<b>A</b>	am-3669	<b>2</b>

SCALE: 4:1 WEIGHT: SHEET 1 OF 1