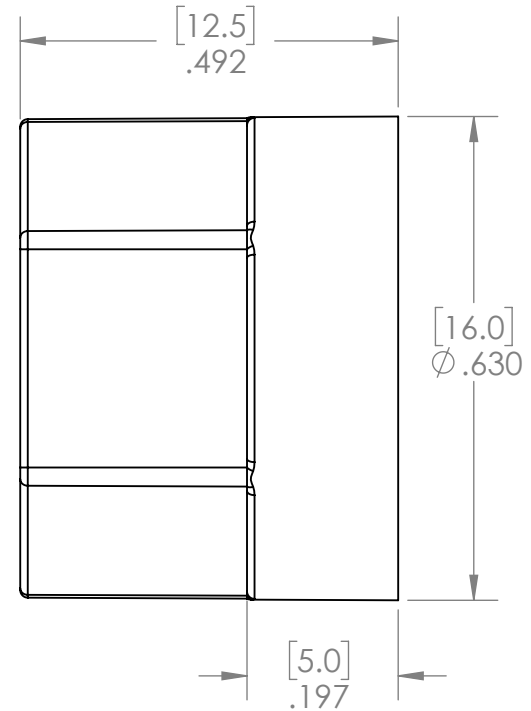
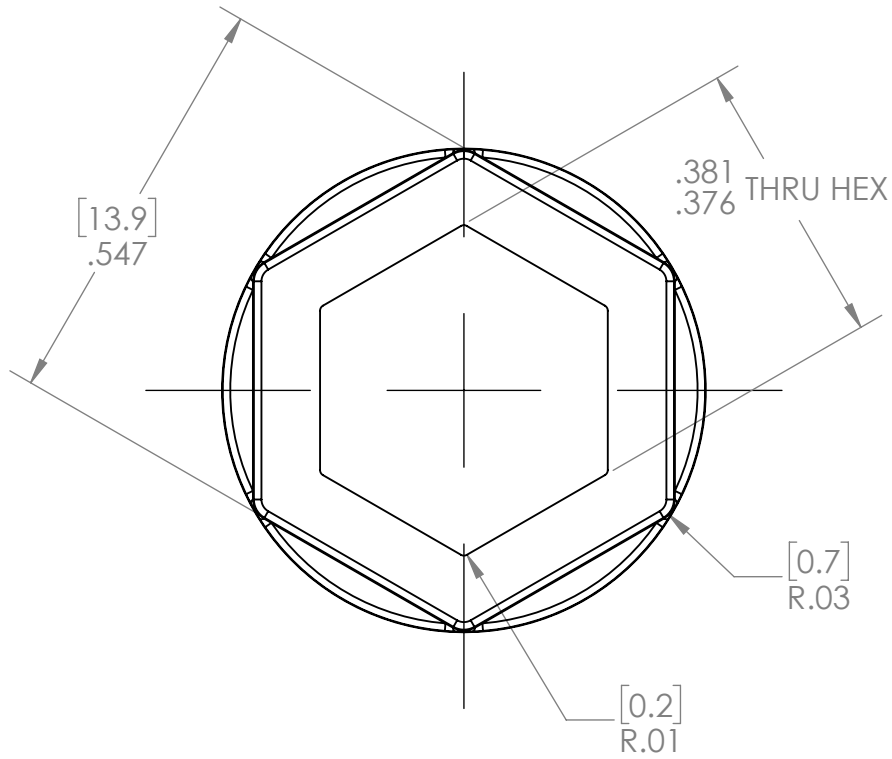
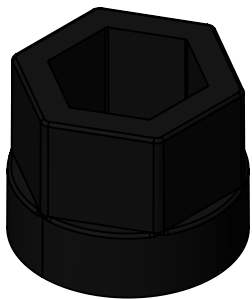



REVISION HISTORY			
REV.	DESCRIPTION	DATE	DRAWN BY
1	ORIGINAL PRINT	9/10/2018	N.MASSOUDA



\*\*\* SEE CAD FOR ADDITIONAL TOOLPATH INFO\*\*\*



UNLESS OTHERWISE SPECIFIED:		COMMENTS:				
<b>DIMENSIONS ARE IN INCHES</b>		DUAL DIMENSIONS ARE IN MILLIMETERS.				
TOLERANCES: FRACTIONAL ±1/16 ANGULAR: MACH ±1° ANGULAR: BEND ±5° ONE PLACE DECIMAL ±0.1 TWO PLACE DECIMAL ±0.01 THREE PLACE DECIMAL ±0.005 FOUR PLACE DECIMAL ±0.0005		BREAK ALL SHARP EDGES		TITLE: <b>14MM HEX TO 375IN HEX ADAPTER</b>		
MATERIAL <b>ACETAL</b>		NAME	DATE	SIZE <b>A</b>	DWG. NO. <b>am-3905</b>	REV <b>1</b>
FINISH <b>DEBURRED</b>		CHECKED		SCALE: 4:1 WEIGHT: SHEET 1 OF 1		
DO NOT SCALE DRAWING		ENG APPR.				
		MFG APPR.				
		Q.A.				