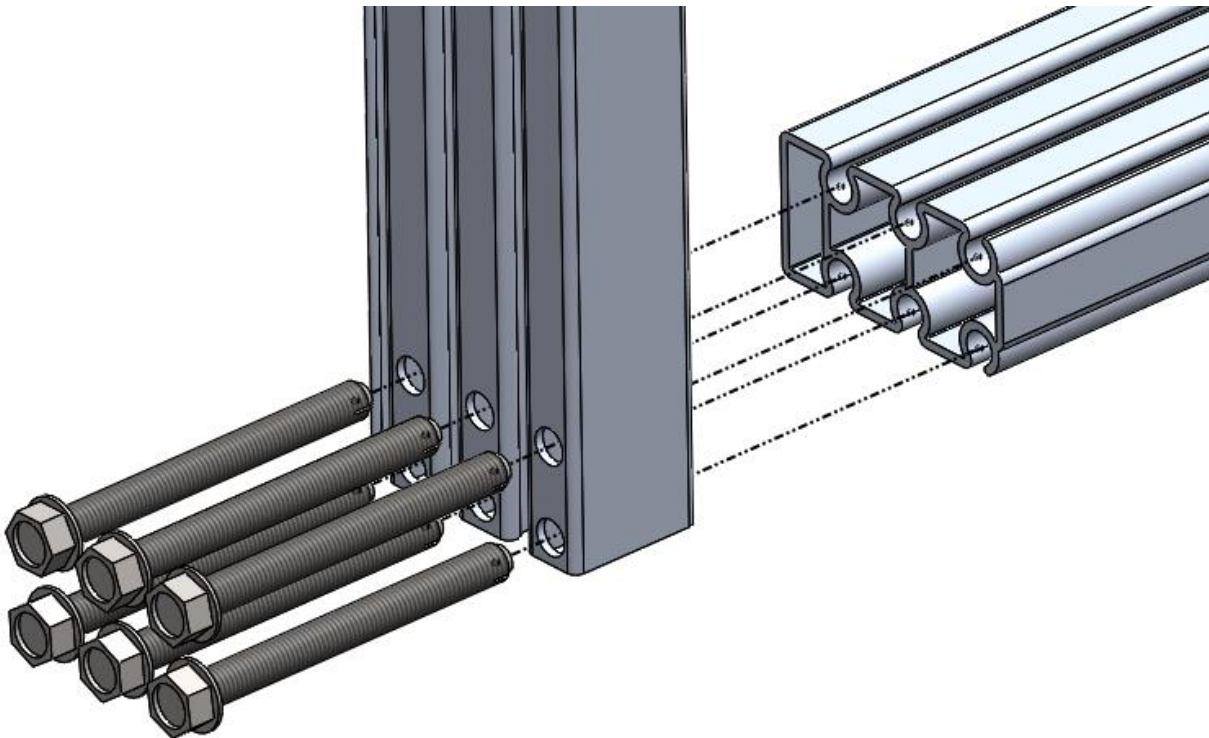
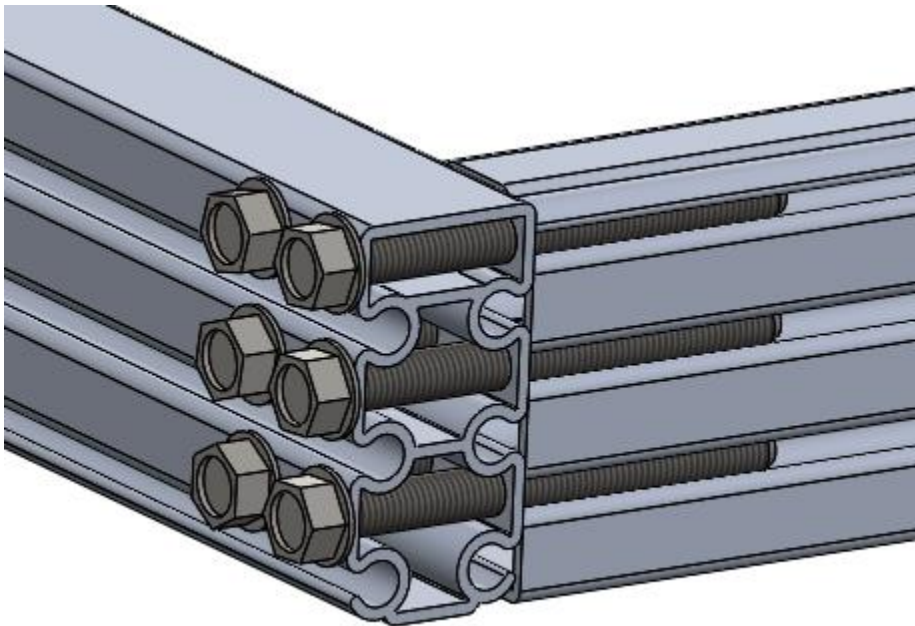
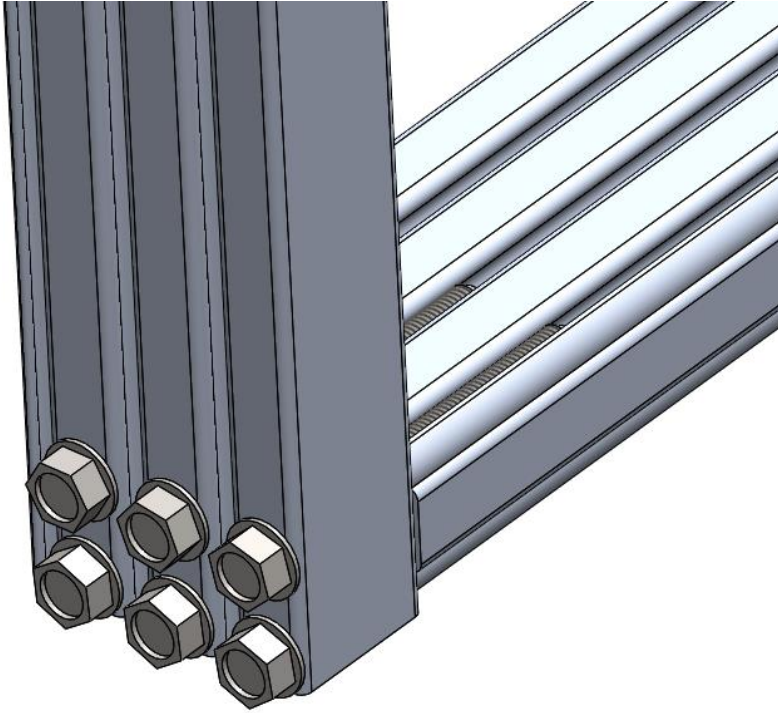


Walnut to Walnut Joints

Vertical to Vertical Joint

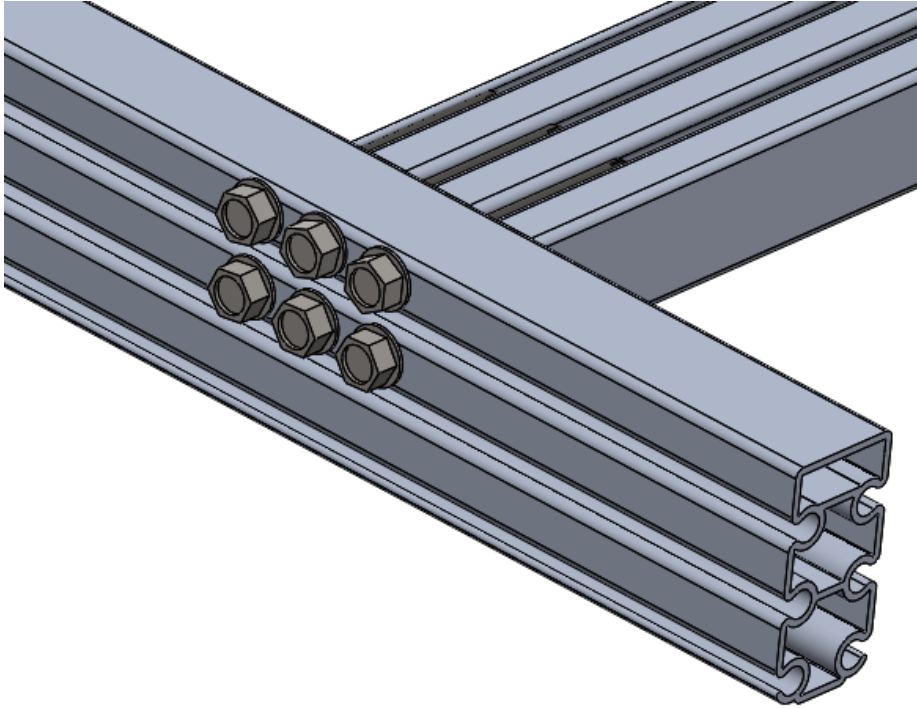
All 6 bolts aren't needed but 4 should be used for most joints. We recommend using 2" to 2.5" Self-Threading screws. You can use a $\frac{3}{4}$ " section of Walnut as the Drill Guide for hole placement, or use the 1:1 scale drawings on the product page



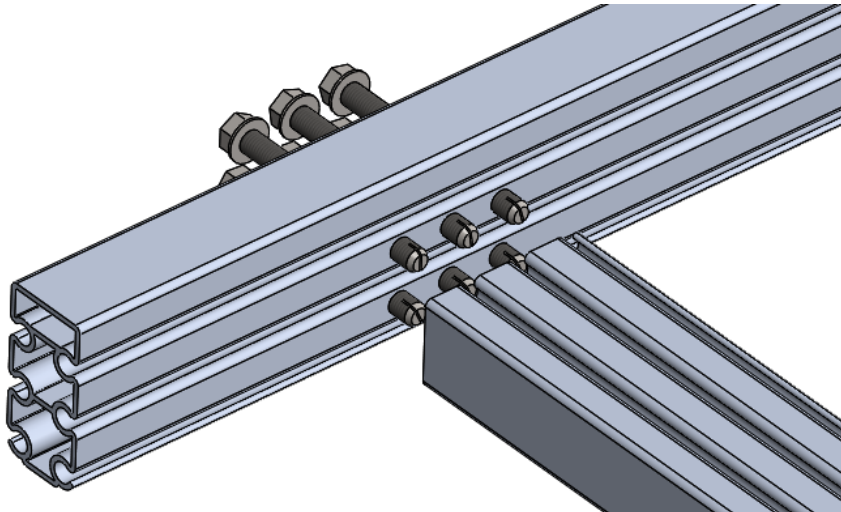


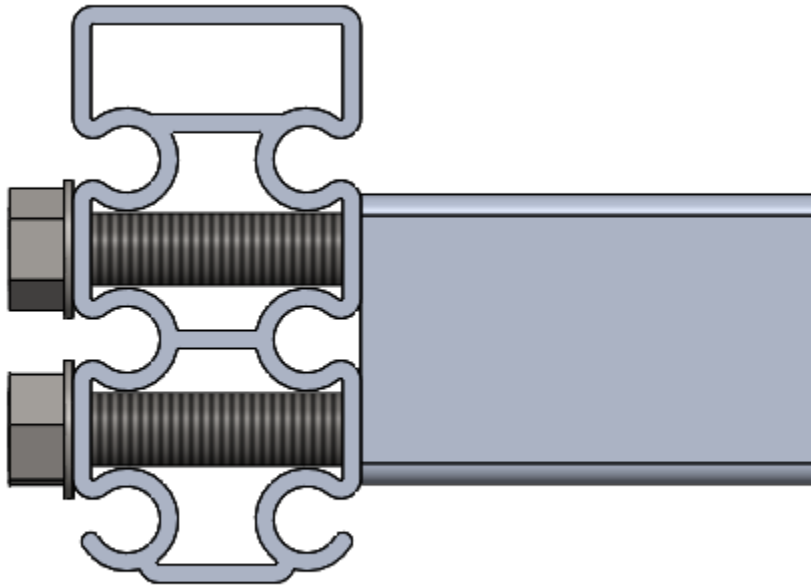
Vertical to Horizontal Joint

These joints, (like the vertical to vertical) can be placed anywhere along the length of the extrusion.



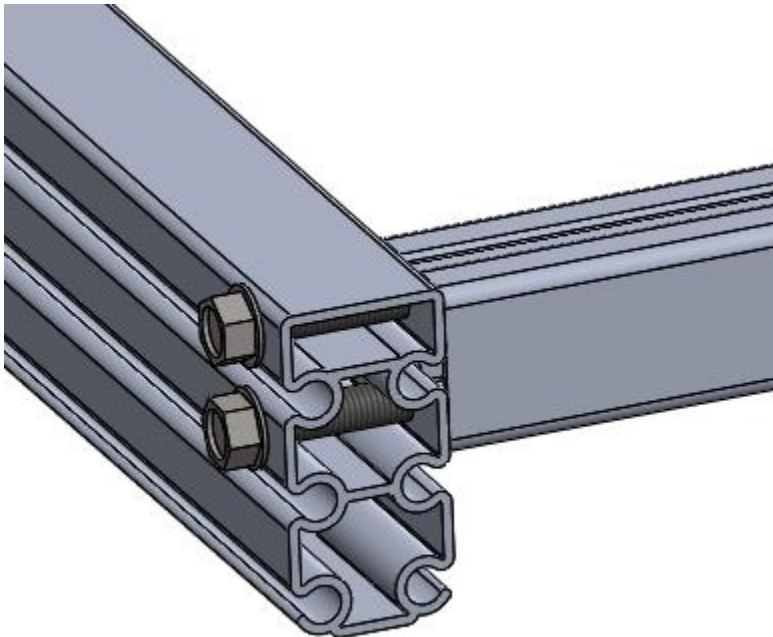
Additionally the Horizontal member can go into the lower set of channels.





Walnut to Peanut Joints

Walnut and Peanut share the same 5/8" hole spacing so they interface perfectly with each other.



Peanut can also be mounted to the 1" side of the Walnut

