



MFD

Solenoid Valves



Setting a new standard for:

- Quality
- Reliability
- Value
- Global Compatibility



Table of Contents

3-13	Valves		
3	Direct Acting Solenoid Valves (M3V1)	10	Explosion Proof Coil Specifications
4-5	3-Way Solenoid Valves (M3V)	11	Solenoid Valve Accessories
6-7	4-Way Solenoid Valves (M4V)	12	4-Way Manifold and Accessories
8	Manifold PowerStrip™ (MPS)	13	Manifold PowerStrip™ Reference
9	NAMUR Solenoid Valve (M4M)		Selection Guide



Mead Fluid Dynamics, Inc.

Mead USA

4114 N. Knox Ave.

Chicago, IL 60641

Phone: (773) 685-6800

Fax: (773) 685-7002

Customer Service Toll Free Number:

(866) 264-9560

sales@mead-usa.com

Visit www.mfdpneumatics.com for downloadable:

- PDF Files
- CAD Drawings
- Exploded Views

Solenoid Valves - M3VI Series

How to Order

M3V1 - 06 - 24VDC - X



PORT SIZE
06 - 1/8 NPT (100 Series)

VOLTAGE
12VDC
24VDC
24VAC 50/60 Hz
120VAC 50/60 Hz

ELECTRICAL CONNECTION
Blank - DIN Connector
FL - Flying Leads¹
X - Explosion Proof²

¹ Not available with 24VAC

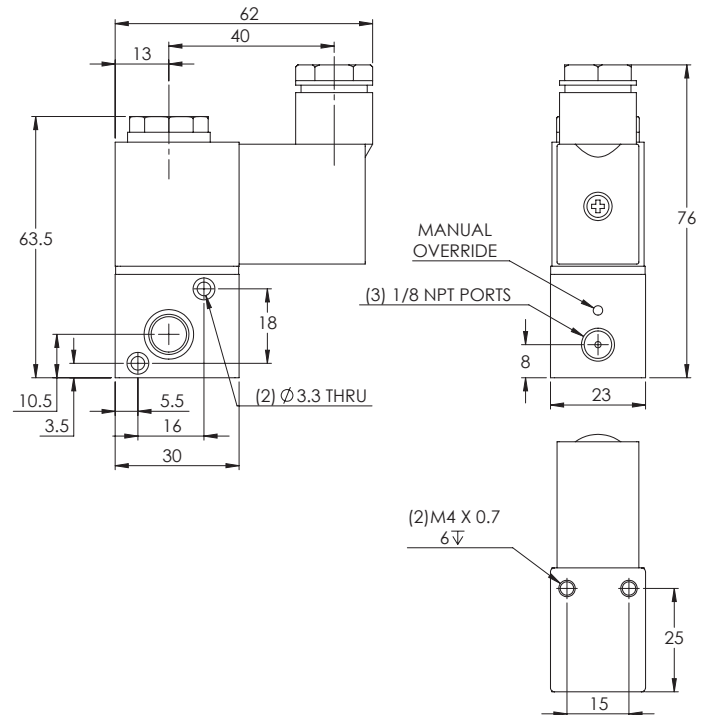
² See page 10 for specifications



Engineering Specifications

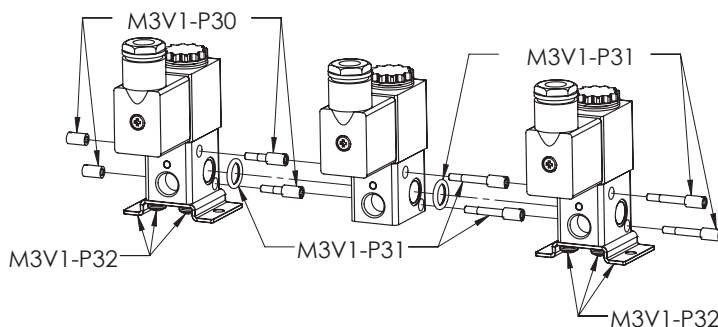
Model	M3V1-06
Fluid	Air (Clean/Dry)
Actuation	Direct Acting
Type	3 Port - 2 Position
Flow	Cv 0.051
Port Size	1/8 NPT
Lubrication	Not Required
Pressure Range	0 to 116 PSI (0 to 0.8 MPa)
Proof Pressure	215 PSI (1.5 MPa)
Temperature Range	-4 °F to 158 °F (-20 °C to 70 °C) (Explosion Proof -4 °F to 140 °F [-20 °C to 60 °C])
Max. Frequency	10 cycle/sec
Electrical Connection	DIN / LED Connector or Flying Leads or Explosion Proof Coil Conduit Entry
Voltage Range	AC: ±15% DC: ±10%
Power Consumption ³	AC: 3.5VA / DC: 3.0W
Protection	IP65 (DIN40050)
Insulation	Class B
Max. Response Time	50ms
Includes	Manual Override
Material	Aluminum Alloy Body
Connector/Coil ³	11mm DIN Connector, Industrial Form B

Dimensions (mm)



³ See page 10 for explosion proof specifications

Stacking Assembly



Part Number	Description
M3V1-P30	Mounting Bracket Kit
M3V1-P31	Stack Coupling Kit
M3V1-P32	Stack Starting Kit

Solenoid Valves - M3V Series

How to Order



M3V 2 10 - 08 - NC - 24VDC - X

MODEL
1 - 100 Series
2 - 200 Series
3 - 300 Series

PORT SIZE
06 - 1/8 NPT (100, 200 Series)
08 - 1/4 NPT (200, 300 Series)
10 - 3/8 NPT (300 Series)

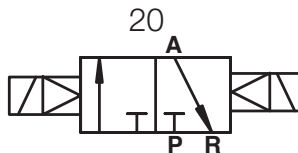
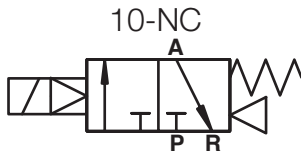
VOLTAGE
12VDC
24VDC
24VAC 50/60 Hz
120VAC 50/60 Hz

TYPE
10 - Single Solenoid
20 - Double Solenoid

OPERATION¹
NC - Normally Closed

¹ Required for Single Solenoid only

ELECTRICAL CONNECTION
Blank - DIN Connector
FL - Flying Leads²
X - Explosion Proof³



² Not available with 24VAC

³ Not available with 100 series. See page 10 for specifications

Engineering Specifications

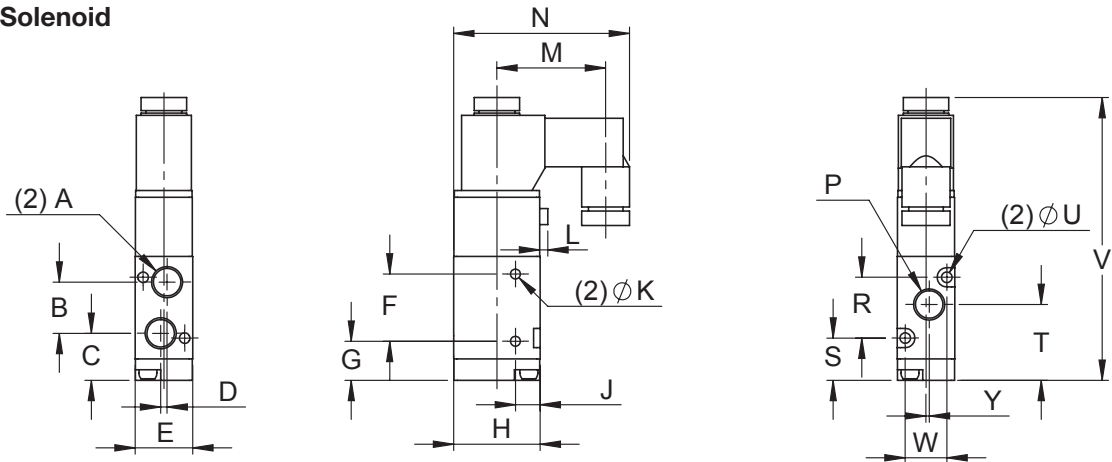
Model	M3V110-06 M3V120-06	M3V210-06 M3V220-06	M3V210-08 M3V220-08	M3V310-08 M3V320-08	M3V310-10 M3V320-10
Fluid	Air (Clean/Dry)				
Actuation	Internally Piloted				
Type	3 Port - 2 Position				
Flow	Cv 0.67	Cv 0.78	Cv 0.89	Cv 1.39	Cv 1.67
Port Size	1/8 NPT	1/8 NPT	1/4 NPT	1/4 NPT	3/8 NPT
Lubrication	Not Required				
Pressure Range	22 to 116 PSI (0.15 to 0.8 MPa)				
Proof Pressure	215 PSI (1.5 MPa)				
Temperature Range	-4 °F to 158 °F (-20 °C to 70 °C) [Explosion Proof -4 °F to 140 °F (-20 °C to 60 °C)]				
Max. Frequency	5 cycle/sec				
Electrical Connection	DIN / LED Connector or Flying Leads or Explosion Proof Coil Conduit Entry				
Voltage Range	AC: ±15% DC: ±10%				
Power Consumption ⁴	AC: 2.5VA / DC: 2.5W	AC: 3.5VA / DC: 3.0W			
Protection	IP65 (DIN40050)				
Insulation	Class B				
Max. Response Time	50ms				
Material	Aluminum Alloy Body				
Connector/Coil ³	9.4mm DIN, Industrial Form C	11mm DIN Connector, Industrial Form B			

⁴ See page 10 for explosion proof specifications

Solenoid Valves - M3V Series

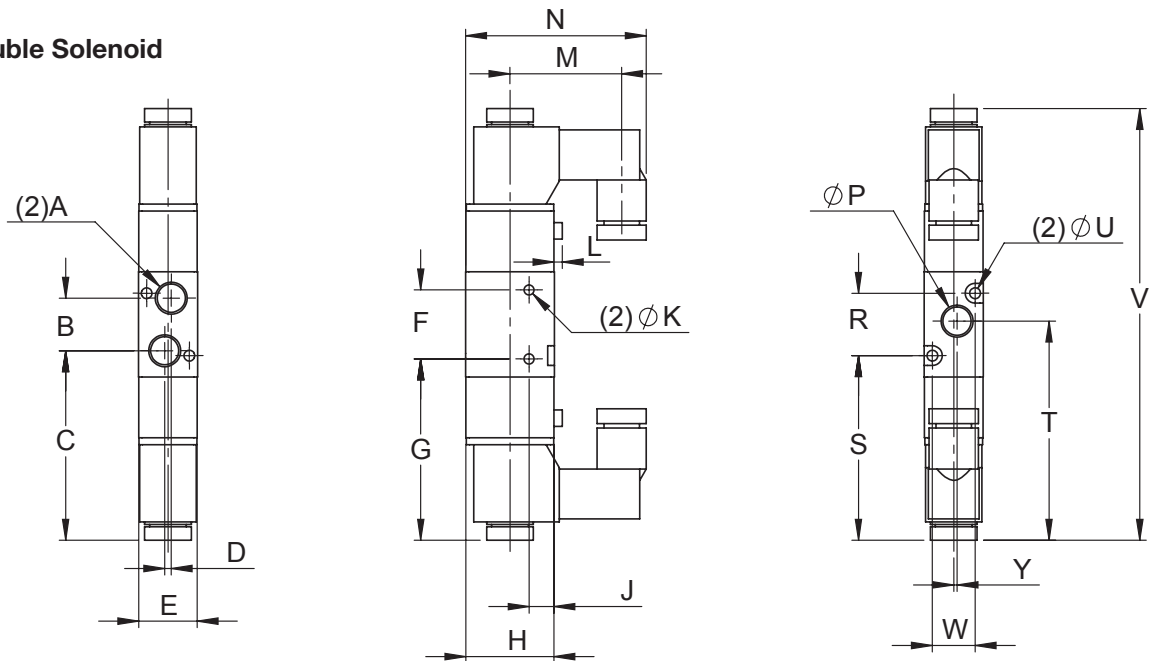
Dimensions (mm)

Single Solenoid



Model	A	B	C	D	E	F	G	H	J	K	L	M	N	P	R	S	T	U	V	W	Y
M3V110-06	1/8 NPT	16	14.7	2	18	21	12.2	27	7.7	3.1	2.5	34	55	1/8 NPT	19	13.2	23.7	3.3	88.4	13	1
M3V210-06	1/8 NPT	22	16.7	0	22	25	15.2	35	8.2	4.2	3	40	67	1/8 NPT	30	12.7	27.7	3.3	109	17	0
M3V210-08	1/4 NPT	22.5	16.5	0	22	25	15.2	35	8.2	4.2	3	40	67	1/4 NPT	30	12.7	28.7	3.3	109	17	1.5
M3V310-08	1/4 NPT	24	20.5	0	27	30	17.5	40	10.5	4.3	2.4	40	69	1/4 NPT	35	15	32.5	4.3	120	20	0
M3V310-10	3/8 NPT	24	20.5	0	27	30	17.5	40	10.5	4.3	2.4	40	69	3/8 NPT	35	15	32.5	4.3	120	20	2

Double Solenoid

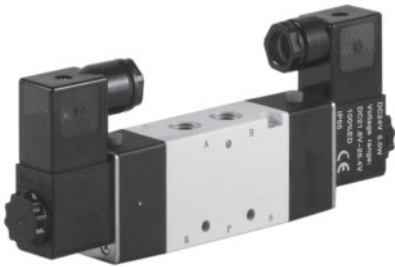


Model	A	B	C	D	E	F	G	H	J	K	L	M	N	P	R	S	T	U	V	W	Y
M3V120-06	1/8 NPT	16	57.7	2	18	21	55.2	27	7.7	3.1	2.5	34	55	1/8 NPT	19	56.2	66.7	3.3	131.4	13	1
M3V220-06	1/8 NPT	22	70.4	0	22	25	69	35	8.2	4.2	3	40	67	1/8 NPT	30	66.4	81.4	3.3	162.8	17	0
M3V220-08	1/4 NPT	22.5	70.2	0	22	25	69	35	8.2	4.2	3	40	67	1/4 NPT	30	66.4	82.4	3.3	162.8	17	1.5
M3V320-08	1/4 NPT	24	75.4	0	27	30	72.4	40	10.5	4.3	2.4	40	69	1/4 NPT	35	70	87.4	4.3	174.8	20	0
M3V320-10	3/8 NPT	24	75.4	0	27	30	72.4	40	10.5	4.3	2.4	40	69	3/8 NPT	35	70	87.4	4.3	174.8	20	2

Solenoid Valves - M4V Series

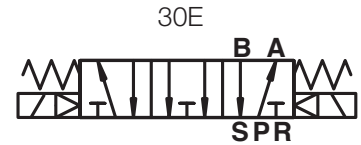
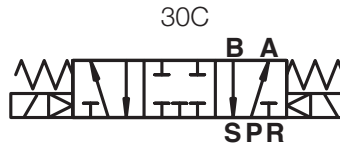
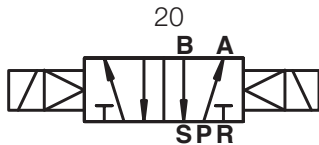
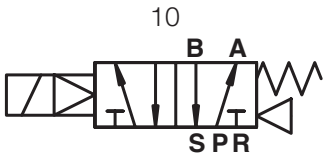
How to Order

M4V 2 10 - 08 - 24VDC - X



MODEL	TYPE	PORT SIZE	VOLTAGE	ELECTRICAL CONNECTION
1 - 100 Series	10 - Single Solenoid	06 - 1/8 NPT (100, 200 Series)	12VDC	Blank - DIN Connector
2 - 200 Series	20 - Double Solenoid	08 - 1/4 NPT (200, 300 Series)	24VDC	FL - Flying Leads ¹
3 - 300 Series	30C - 3 Position Double Solenoid Closed Center	10 - 3/8 NPT (300 Series)	24VAC 50/60 Hz	X - Explosion Proof ²
4 - 400 Series	30E - 3 Position Double Solenoid Exhaust Center	15 - 1/2 NPT (400 Series)	120VAC 50/60 Hz	

¹ Not available with 24VAC
² Not available with 100 series. See page 10 for specifications



Engineering Specifications

Model	M4V110-06 M4V120-06	M4V130C-06 M4V130E-06	M4V210-06 M4V220-06	M4V230C-06 M4V230E-06	M4V210-08 M4V220-08	M4V230C-08 M4V230E-08
Fluid	Air (Clean/Dry)					
Actuation	Internally Piloted					
Type	5 Port-2 Position	5 Port-3 Position	5 Port-2 Position	5 Port-3 Position	5 Port-2 Position	5 Port-3 Position
Flow	Cv 0.67	Cv 0.50	Cv 0.78	Cv 0.67	Cv 0.89	Cv 0.67
Port Size	1/8 NPT		1/8 NPT		Inlet/Outlet Ports 1/4 NPT Exhaust Ports 1/8 NPT	
Lubrication	Not Required					
Pressure Range	22 to 116 PSI (0.15 to 0.8 MPa)					
Proof Pressure	215 PSI (1.5 MPa)					
Temperature Range	-4 °F to 158 °F (-20 °C to 70 °C) (Explosion Proof -4 °F to 140 °F ([20 °C to 60 °C])					
Max. Frequency	5 cycle/sec	3 cycle/sec	5 cycle/sec	3 cycle/sec	5 cycle/sec	3 cycle/sec
Electrical Connection	DIN / LED Connector or Flying Leads or Explosion Proof Coil Conduit Entry					
Voltage Range	AC: ±15% DC: ±10%					
Power Consumption ³	AC: 2.5VA / DC: 2.5W			AC: 3.5VA / DC: 3.0W		
Protection	IP65 (DIN40050)					
Insulation	Class B					
Max. Response Time	50ms					
Material	Aluminum Alloy Body					
Connector/Coil ³	9.4mm DIN, Industrial Form C			11mm DIN Connector, Industrial Form B		

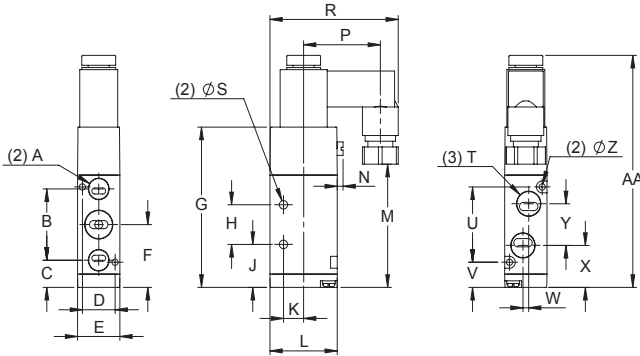
Model	M4V310-08 M4V320-08	M4V330C-08 M4V330E-08	M4V310-10 M4V320-10	M4V330C-10 M4V330E-10	M4V410-15 M4V420-15	M4V430C-15 M4V430E-15
Fluid	Air (Clean/Dry)					
Actuation	Internally Piloted					
Type	5 Port-2 Position	5 Port-3 Position	5 Port-2 Position	5 Port-3 Position	5 Port-2 Position	5 Port-3 Position
Flow	Cv 1.40	Cv 1.00	Cv 1.68	Cv 1.00	Cv 2.79	Cv 1.68
Port Size	1/4 NPT		Inlet/Outlet Ports 3/8 NPT Exhaust Ports 1/4 NPT		1/2 NPT	
Lubrication	Not Required					
Pressure Range	22 to 116 PSI (0.15 to 0.8 MPa)					
Proof Pressure	215 PSI (1.5 MPa)					
Temperature Range	-4 °F to 158 °F (-20 °C to 70 °C) (Explosion Proof -4 °F to 140 °F (-20 °C to 60 °C))					
Max. Frequency	4 cycle/sec	3 cycle/sec	4 cycle/sec	3 cycle/sec	3 cycle/sec	
Electrical Connection	DIN / LED Connector or Flying Leads or Explosion Proof Coil Conduit Entry					
Voltage Range	AC: ±15% DC: ±10%					
Power Consumption ³	AC: 3.5VA / DC: 3.0W					
Protection	IP65 (DIN40050)					
Insulation	Class B					
Max. Response Time	50ms					
Material	Aluminum Alloy Body					
Connector/Coil ³	11mm DIN Connector, Industrial Form B					

³ See page 10 for explosion proof specifications

Solenoid Valves - M4V Series

Dimensions (mm)

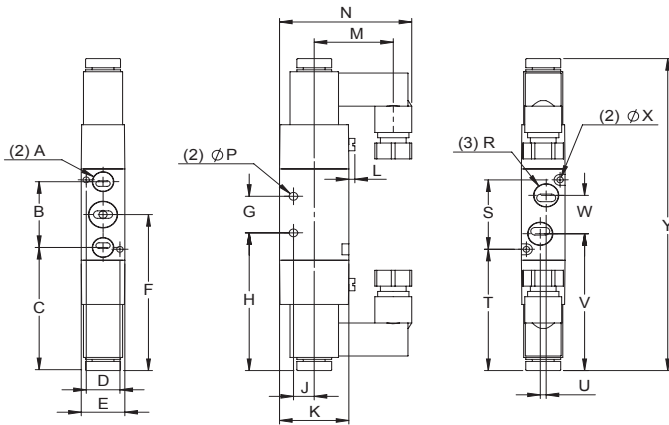
Single Solenoid



MODEL	A	B	C	D	E	F	G	H	J	K	L
M4V110-06	1/8 NPT	28	14.2	13	18	28.2	70.4	14	21.2	9.5	27
M4V210-06	1/8 NPT	36	13.7	17	22	31.7	81	20	21.7	10.5	35
M4V210-08	1/8 NPT	36	13.7	17	22	31.7	81	20	21.7	10.5	35
M4V310-08	1/4 NPT	45	17.5	20	27	40	98.7	24	28	13.5	40
M4V310-10	1/4 NPT	45	17.5	20	27	40	98.7	24	28	13.5	40
M4V410-15	1/2 NPT	63	25.5	27	34	57	132.3	28	43	17.5	50

MODEL	M	N	P	R	S	T	U	V	W	Y	Z	AA
M4V110-06	59.4	2.5	34	55	3.3	1/8 NPT	30	13.2	3	16	3.3	99.4
M4V210-06	62	3	40	67	4.3	1/8 NPT	38	12.7	0	18	3.3	117
M4V210-08	62	3	40	67	4.3	1/4 NPT	38	12.7	3	21	3.3	117
M4V310-08	80	2.4	40	69	4.3	1/4 NPT	50	15	0	22	4.3	135
M4V310-10	80	2.4	40	69	4.3	3/8 NPT	50	15	4	24	4.3	135
M4V410-15	114	2.8	40	74	5.5	1/2 NPT	72	21	4	36	4.3	168.4

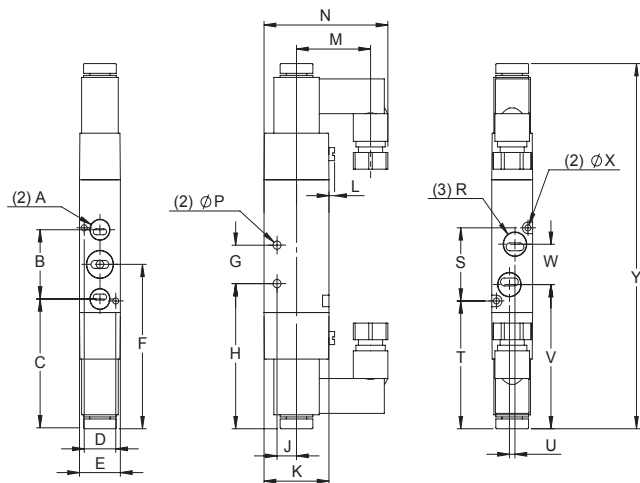
Double Solenoid



MODEL	A	B	C	D	E	F	G	H	J	K	L
M4V120-06	1/8 NPT	28	57.2	13	18	71.2	14	64.2	9.5	27	2.5
M4V220-06	1/8 NPT	36	67.4	17	22	85.4	20	75.4	10.5	35	3
M4V220-08	1/8 NPT	36	67.4	17	22	85.4	20	75.4	10.5	35	3
M4V320-08	1/4 NPT	45	72.4	20	27	94.9	24	83	13.5	40	2.4
M4V320-10	1/4 NPT	45	72.4	20	27	94.9	24	83	13.5	40	2.4
M4V420-15	1/2 NPT	63	80	27	34	111.4	28	97.4	17.5	50	2.8

MODEL	M	N	P	R	S	T	U	V	W	X	Y
M4V120-06	34	55	3.3	1/8 NPT	30	56.2	3	63.2	16	3.3	142.4
M4V220-06	40	67	4.3	1/8 NPT	38	66.4	0	76.4	18	3.3	171
M4V220-08	40	67	4.3	1/4 NPT	38	66.4	3	74.9	21	3.3	171
M4V320-08	40	69	4.3	1/4 NPT	50	70	0	83.9	22	4.3	190
M4V320-10	40	69	4.3	3/8 NPT	50	70	4	82.9	24	4.3	190
M4V420-15	40	74	5.5	1/2 NPT	72	75.4	4	93.4	36	4.3	223

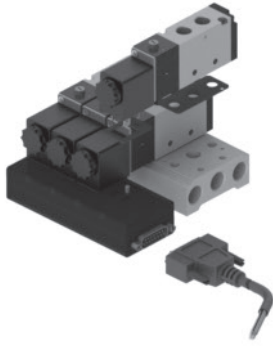
Double Solenoid - Three Position



MODEL	A	B	C	D	E	F	G	H	J	K	L
M4V130_-06	1/8 NPT	28	57.2	13	18	71.2	14	64.2	9.5	27	2.5
M4V230_-06	1/8 NPT	36	67.4	17	22	85.4	20	75.4	10.5	35	3
M4V230_-08	1/8 NPT	36	67.4	17	22	85.4	20	75.4	10.5	35	3
M4V330_-08	1/4 NPT	45	72.4	20	27	94.9	24	83	13.5	40	2.4
M4V330_-10	1/4 NPT	45	72.4	20	27	94.9	24	83	13.5	40	2.4
M4V430_-15	1/2 NPT	63	80	27	34	111.4	28	97.4	17.5	50	2.8

MODEL	M	N	P	R	S	T	U	V	W	X	Y
M4V130_-06	34	55	3.3	1/8 NPT	30	56.2	3	63.2	16	3.3	157.4
M4V230_-06	40	67	4.3	1/8 NPT	38	66.4	0	76.4	18	3.3	190
M4V230_-08	40	67	4.3	1/4 NPT	38	66.4	3	74.9	21	3.3	190
M4V330_-08	40	69	4.3	1/4 NPT	50	70	0	83.9	22	4.3	209
M4V330_-10	40	69	4.3	3/8 NPT	50	70	4	82.9	24	4.3	209
M4V430_-15	40	74	5.5	1/2 NPT	72	75.4	4	93.4	36	4.3	243.8

Valve Accessories - MPS Series



How to Order

MPS 2 - 4 - D - C3

MODEL	NUMBER OF STATIONS	VOLTAGE	OPTIONAL CABLE
1 - M4V100 Series 2 - M4V200 & M3V1 Series 3 - M4V300 Series 4 - M4V400 Series	2 to 8 Stations	A - 24-120VAC D - 12-24VDC	Blank - None C3 - 3M Mating Cable C10 - 10M Mating Cable

Valves and manifold not included.
See page 13 for valves, manifold,
and PowerStrip™ selection guide.

Engineering Specifications

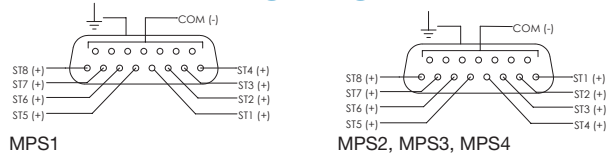
Product Contents	
Model	Includes
MPS1- ••••	Manifold PowerStrip™, Screws, Gaskets, Connector Seal
MPS2- ••••	
MPS3- ••••	
MPS4- ••••	
MPS1- ••••-C3 MPS2- ••••-C3 MPS3- ••••-C3 MPS4- ••••-C3	Manifold PowerStrip™, Screws, Gaskets, 3m DB15 Cable, Connector Seal
MPS1- ••••-C10 MPS2- ••••-C10 MPS3- ••••-C10 MPS4- ••••-C10	
MPS1- ••••-C10 MPS2- ••••-C10 MPS3- ••••-C10 MPS4- ••••-C10	
MPS1- ••••-C10 MPS2- ••••-C10 MPS3- ••••-C10 MPS4- ••••-C10	

Model	MPS
Voltage Range	(-D) 12-24 VDC, (-A) 24-120VAC
Temperature Range	0 °F to 120 °F (-20 °C to 49 °C)
Max. Coil Power	4W
Electrical Connection	15-Pin D-Sub (DB15) Male
Circuit Protection	(-D) N4004 Diode, (-A) MOV
Enclosure Rating	IP65
LED Indicator	Yes
Material	ABS Body

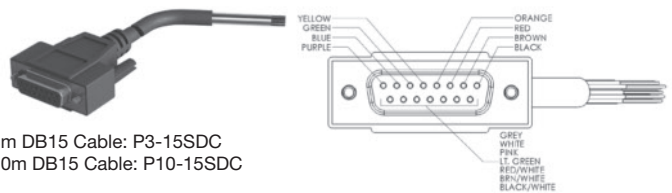
Valve Compatibility		
Valves	Manifold	Manifold PowerStrip™
M4V1••••AC	M100M-•F	MPS1-••A-•
M4V1••••DC		MPS1-••D-•
M4V2••••AC	M200M-•F	MPS2-••A-•
M4V2••••DC		MPS2-••D-•
M4V3••••AC	M300M-•F	MPS3-••A-•
M4V3••••DC		MPS3-••D-•
M4V4••••AC	M400M-•F	MPS4-••A-•
M4V4••••DC		MPS4-••D-•

Accessories	Part Number
Blanking Plug - MPS1	MPS1-B
Blanking Plug - MPS2/MPS3/MPS4	MPS2-B

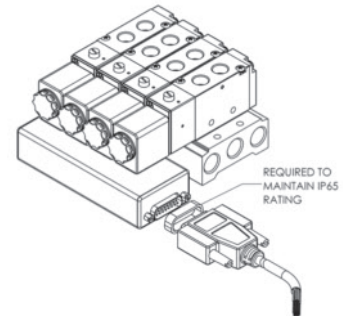
Wiring Diagrams



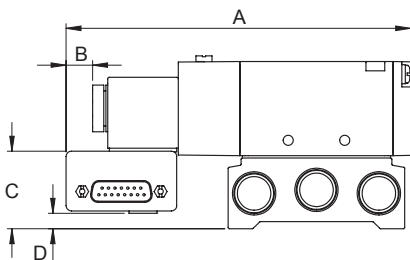
Accessories



DB15 Connector Seal
P/N: 3701400



Dimensions (mm)



MODEL	A	B	C	D
MPS1	109.2	11.9	23.9	-2.5
MPS2	128.3	11.4	26.4	0
MPS3	146.4	11.4	32.9	6.5
MPS4	180.0	11.4	45.6	20.2

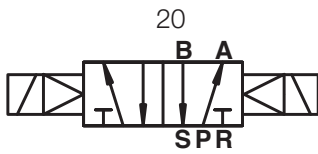
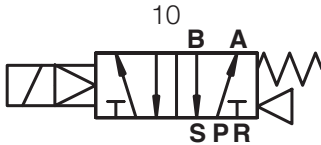
Solenoid Valves - M4M (NAMUR) Series



How to Order

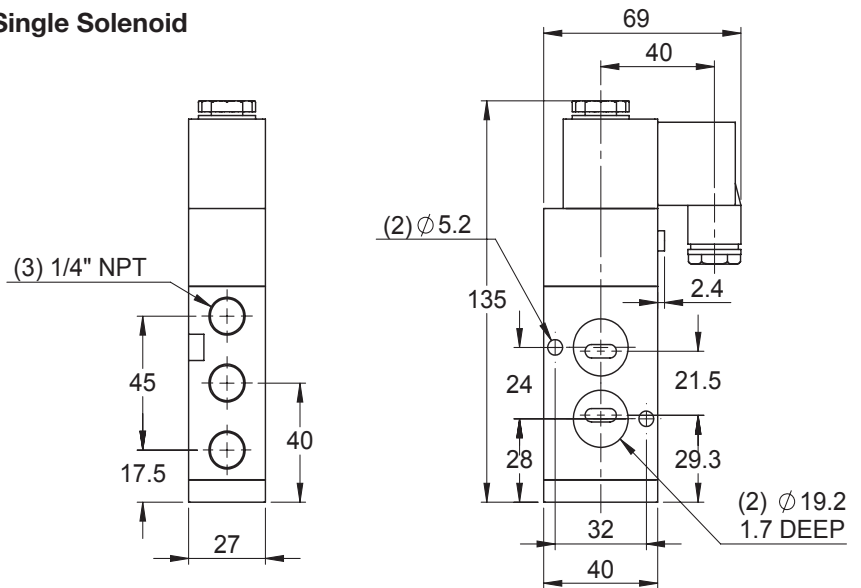
M4M 3 10 - 08 - 24VDC-FL

MODEL	TYPE	PORT SIZE	VOLTAGE	ELECTRICAL CONNECTION
3 - 300 Series	10 - Single Solenoid 20 - Double Solenoid	08 - 1/4 NPT	12VDC 24VDC 24VAC 50/60 Hz 120VAC 50/60 Hz	Blank - DIN Connector FL - Flying Leads ¹ <small>¹ Not available with 24VAC</small>

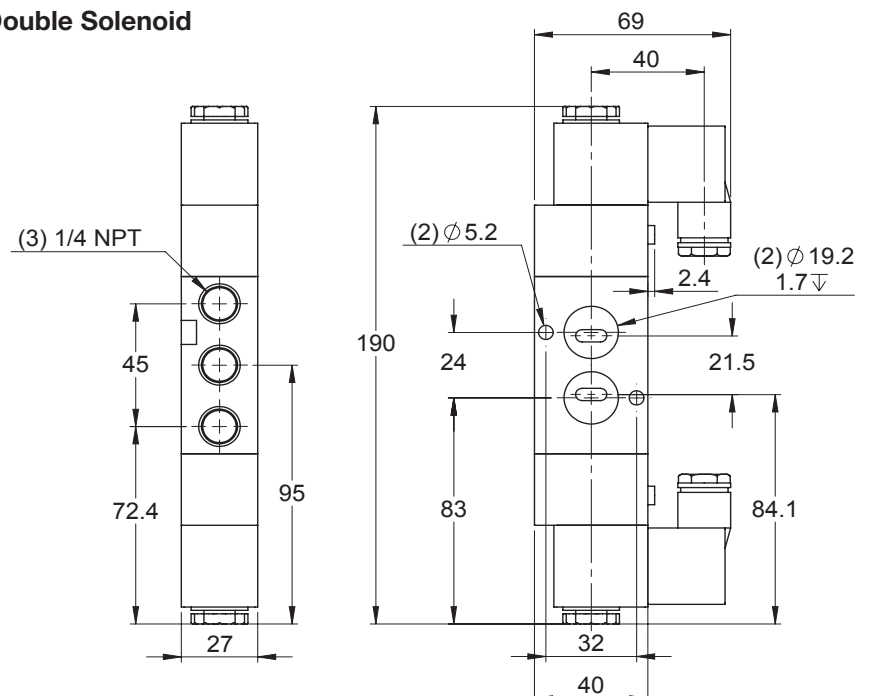


Dimensions (mm)

Single Solenoid



Double Solenoid



Engineering Specifications

Model	M4M310-08 M4M320-08
Fluid	Air (Clean/Dry)
Actuation	Internally Piloted
Type	5 Port - 2 Position
Flow	Cv 1.40
Port Size	1/4 NPT
Lubrication	Not Required
Pressure Range	22 to 116 PSI (0.15 to 0.8 MPa)
Proof Pressure	215 PSI (1.5 MPa)
Temperature Range	-4 °F to 158 °F (-20 °C to 70 °C)
Max. Frequency	4 cycle/sec
Electrical Connection	DIN / LED Connector or Flying Leads
Voltage Range	AC: ±15% DC: ±10%
Power Consumption	AC: 3.5VA / DC: 3.0W
Protection	IP65 (DIN40050)
Insulation	Class B
Max. Response Time	50ms
Material	Aluminum Alloy Body
Screws	M5 X 0.8, 27.5mm long, Socket Head Cap Screw, Zinc Plated
Connector/Coil	11mm DIN Connector, Industrial Form B

Explosion Proof Coil Specifications



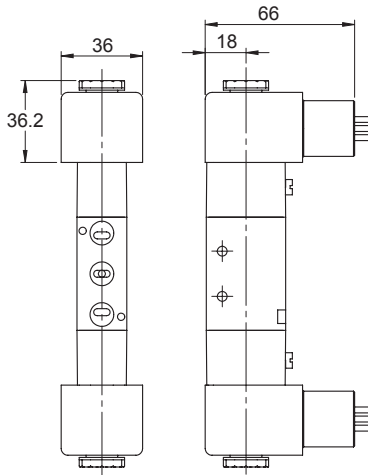
Engineering Specifications

Model	Explosion Proof Coils
Available On	M3V1, M3V200, M3V300, M4V200, M4V300, M4V400, MGV200, MGV300, and MGV400 Series
Voltages Available	12VDC, 24VDC, 120VAC
Power Consumption	AC: 6.8VA / DC: 4.6W
Temperature Range	-4 °F to 140 °F (-20 °C to 60 °C)
Duty Cycle	100%
Protection	IP65
Material	Thermoplastic
Leads Length	24 inches
Connection Type	1/2 NPT Conduit
Hazardous Location	Ex m II T4 and Division 1 Class 1, Group A, B, C, and D Class II, Group E, F, and G Class III
Tested According To	CAN / CSA-E79-0-95 CAN / CSA-E79-18-95 for CSA ANSI / ISA-S12.00.01-1999 ANSI / ISA-S12.23.01-1998 for FM

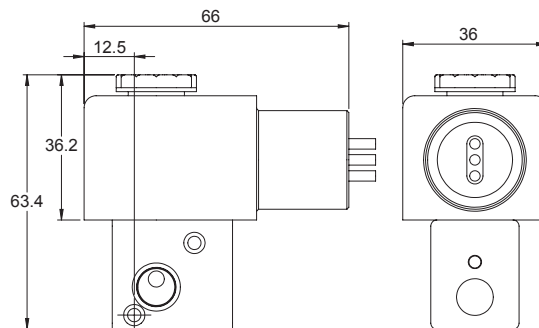
Dimensions (mm)

M3V and M4V Series

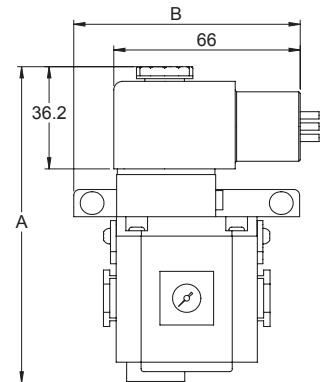
(M4V part shown)



M3V1 Series




MGV Series



MODEL	A	B
MGV200	112	80.2
MGV300	118	82.7
MGV400	130	91.2

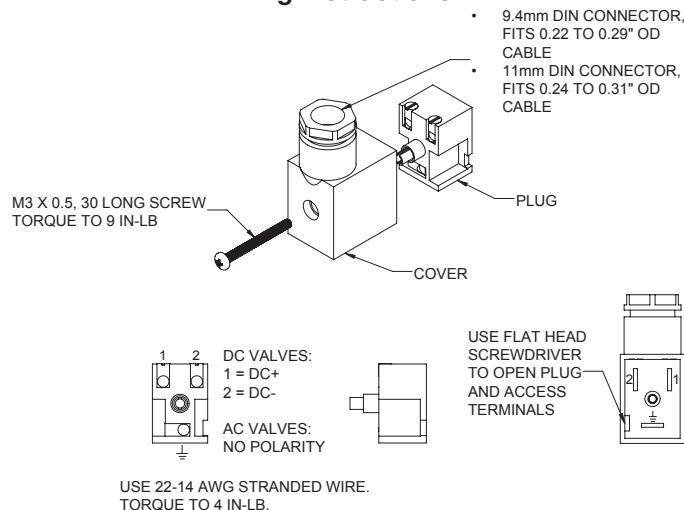
See pages 5 and 7 for all other dimensions.
Note: overall length is the same as the equivalent DIN connector model.

Solenoid Valve Service Parts

Type	Description	Part Number	Compatibility
Solenoid Valve Coils			
Coils for DIN Connectors 	Coil for 9.4mm DIN Connector, 110/120 VAC	M4V110-016-4A	100 Series Solenoid Valves
	Coil for 9.4mm DIN Connector, 12VDC	M4V110-016-2A	
	Coil for 9.4mm DIN Connector, 24VAC	M4V110-016-6A	
	Coil for 9.4mm DIN Connector, 24VDC	M4V110-016-8A	
	Coil for 11mm DIN Connector, 110/120 VAC	M4V210-016-2E	200, 300, 400 Series Solenoid Valves, MGV Soft Start Valves, M3V1 Direct Acting Valves
	Coil for 11mm DIN Connector, 12VDC	M4V210-016-4E	
	Coil for 11mm DIN Connector, 24VAC	M4V210-016-6E	
	Coil for 11mm DIN Connector, 24VDC	M4V210-016-8E	
Coils with Flying Leads 	Coil with Flying Leads, 110/120 VAC	S100C-120VAC	100 Series Solenoid Valves
	Coil with Flying Leads, 12VDC	S100C-12VDC	
	Coil with Flying Leads, 24VDC	S100C-24VDC	
	Coil with Flying Leads, 110/120 VAC	S300C-120VAC	200, 300, 400 Series Solenoid Valves, MGV Soft Start Valves, M3V1 Direct Acting Valves
	Coil with Flying Leads, 12VDC	S300C-12VDC	
Explosion Proof Coils ¹ 	Explosion Proof Coil 110/120VAC	3080172-003	200, 300, 400 Series Solenoid Valves, MGV Soft Start Valves, M3V1 Direct Acting Valves
	Explosion Proof Coil 12VDC	3080172-005	
	Explosion Proof Coil 24VDC	3080172-006	
Solenoid Valve Connectors			
DIN Connectors 	9.4mm Industrial Form C DIN Connector, AC	M4V110-005-P2	100 Series Solenoid Valves with AC coil
	9.4mm Industrial Form C DIN Connector, DC	M4V110-005-P3	100 Series Solenoid Valves with DC coil
	11mm Industrial Form B DIN Connector, AC	M4V210-005-P2	200, 300, 400 Series, MGV Soft Start Valves, and M3V1 Direct Acting Valves with AC coil
	11mm Industrial Form B DIN Connector, DC	M4V210-005-P3A	200, 300, 400 Series, MGV Soft Start Valves, and M3V1 Direct Acting Valves with DC coil

1 - Not available for 100 series solenoid valves

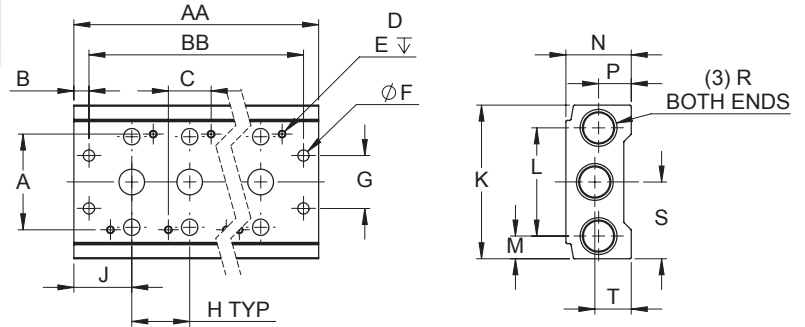
Wiring Instructions



Solenoid and Air Pilot Valves - Accessories



Manifolds Dimensions (mm)



How to Order M200M - 4F

MODEL	NUMBER OF STATIONS
1 - 100 Series	2F - 2 Stations
2 - 200 Series	4F - 4 Stations
3 - 300 Series	6F - 6 Stations
4 - 400 Series	8F - 8 Stations

Model	A	B	C	D	E	F	G	H	J	K	L	M
M100M	30	5	13	M3X0.5	5.5	4.5	20	19	19	58	40	9
M200M	38	6	17	M3X0.5	5	4.5	21	23	23	61	43	9
M300M	50	6	20	M4X0.7	5	4.5	26	28	27	75	53	11
M400M	72	7	27	M4X0.7	6	5.5	32	35	31.5	104	68	18

Engineering Specifications

Model	Manifold
Fluid	Air (Clean/Dry)
Temperature Range	-4 °F to 158 °F (-20 °C to 70 °C)
Material	Aluminum Alloy
Includes	Gaskets and Screws

Model	N	P	R	S	T	AA				BB			
						2F	4F	6F	8F	2F	4F	6F	8F
M100M	26	12.5	1/4 NPT	29	14	57	95	133	171	47	85	123	161
M200M	27	13	1/4 NPT	30.5	14.5	69	115	161	207	57	103	149	195
M300M	31	15	3/8 NPT	37.5	16.5	82	138	194	250	70	126	182	238
M400M	39	19	1/2 NPT	52	19	98	168	238	273	84	154	224	294

Manifold Blanking Plates



How to Order M200M - B

MODEL
1 - 100 Series
2 - 200 Series
3 - 300 Series
4 - 400 Series

Manifold Gasket and Screw Kit¹



¹ Each kit includes one gasket and two screws.


How to Order M200M - G

MODEL
1 - 100 Series
2 - 200 Series
3 - 300 Series
4 - 400 Series

Manifold PowerStrip™ Reference - Selection Guide

Step 1: Valve

Select an MFD solenoid valve.



M4V 2 10 - 08 - 24VDC


MODEL	TYPE	PORT SIZE	VOLTAGE
1 - 100 Series	10 - Single Solenoid	06 - 1/8 NPT (100, 200 Series)	12VDC
2 - 200 Series	20 - Double Solenoid	08 - 1/4 NPT (200, 300 Series)	24VDC
3 - 300 Series	30C - 3 Position Double Solenoid Closed Center	10 - 3/8 NPT (300 Series)	24VAC 50/60 Hz
4 - 400 Series	30E - 3 Position Double Solenoid Exhaust Center	15 - 1/2 NPT (400 Series)	120VAC 50/60 Hz

See page 6 for full valve specifications.



Step 2: Manifold

Match the manifold model to the valve model.



M200M - 4F


MODEL	NUMBER OF STATIONS
1 - 100 Series	2F - 2 Stations
2 - 200 Series	4F - 4 Stations
3 - 300 Series	6F - 6 Stations
4 - 400 Series	8F - 8 Stations

See page 14 for full manifold specifications.



Step 3: PowerStrip™

Match the Manifold PowerStrip™ to the valve model, voltage, and manifold length.



MPS 2 - 4 - D - C3


MODEL	NUMBER OF STATIONS	OPTIONAL CABLE	VOLTAGE
1 - M4V100 Series	2 to 8 Stations	Blank - None	A - 24-120VAC B - 12-24VDC
2 - M4V200 & M3V1 Series		C3 - 3M Mating Cable	
3 - M4V300 Series		C10 - 10M Mating Cable	
4 - M4V400 Series			

See page 8 for full PowerStrip™ specifications.

Manifolds with double solenoid valves require two PowerStrips. See setup guide on www.Bimba.com for more information



Bill of Materials



ITEM	QTY.	PART NUMBER
Valve	4	M4V210-08-24VDC
Manifold	1	M200M-4F
Manifold PowerStrip™	1	MPS2-4-D-C3

Notes



Your stocking distributor is:



Mead Fluid Dynamics

4114 North Knox Avenue Chicago, IL 60641
Phone: 773-685-6800 Toll Free: 877-MEAD-USA Fax: 773-685-7002
Email: sales@mead-usa.com www.mead-usa.com

Bimba Manufacturing Headquarters

P.O. Box 68 Monee, Illinois 60449-0068
Phone: 708-534-8544 Toll Free: 800-44-BIMBA Fax: 708-235-2014
Email: cs@bimba.com www.bimba.com

BIMBA BRANDS | ACRO | MEAD | MFD | PNEUMADYNE | TRD

PNEUMATIC • ELECTRIC • HYDRAULIC ACTUATORS FITTINGS — MANIFOLDS — VALVES — AIR PREPARATION — SAFETY & PRODUCTION



Worldwide distribution means there is a professional stocking
Bimba distributor nearby ready to service your needs.



National
FLUID POWER
Association®

MEMBER

BIMBA IS AN ISO 9001 COMPANY