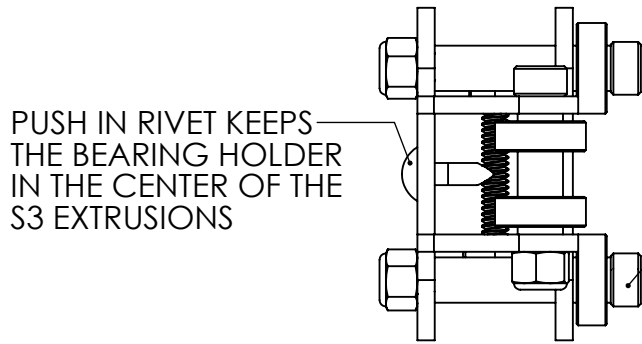


REVISION HISTORY			
REV.	DESCRIPTION	DATE	DRAWN BY
1	ORIGINAL PRINT	8/29/2019	D Blau



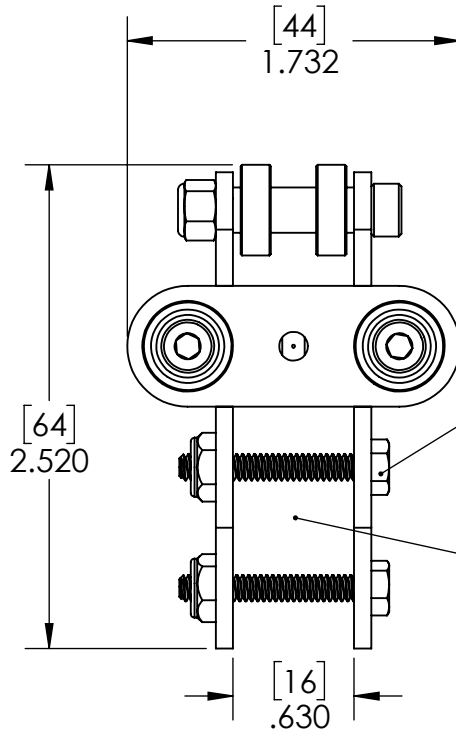
PUSH IN RIVET KEEPS THE BEARING HOLDER IN THE CENTER OF THE S3 EXTRUSIONS

M4 BOLTS ARE USED TO HOLD THE BEARINGS

6x12x4 BEARING (4)

S3 LINEAR MOTION BEARING HOLDER (2)

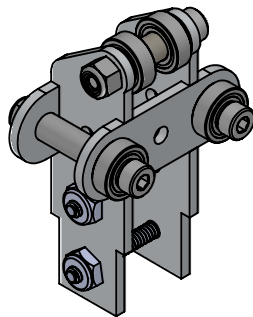
S3 LINEAR MOTION MAIN BRACKET (2)




6-32 HARDWARE IS USED TO HOLD THE ASSEMBLY TO S3 EXTRUSIONS

S3 EXTRUSION SOLD SEPARATLY FOR CUSTOMIZABLE LENGTHS

\*\*\* SEE CAD AND USER GUIDE FOR ADDITIONAL INFO\*\*\*



KIT IS SOLD AS A PAIR OF BEARING ASSEMBLIES

UNLESS OTHERWISE SPECIFIED:		COMMENTS:				
<b>DIMENSIONS ARE IN INCHES</b>		DUAL DIMENSIONS ARE IN MILLIMETERS.				
TOLERANCES:		BREAK ALL SHARP EDGES.		TITLE:		
FRACTIONAL	±1/16			S3 Linear Motion Kit		
ANGULAR: MACH	±1°			Bearing Assembly		
ANGULAR: BEND	±5°			SIZE	DWG. NO.	REV
ONE PLACE DECIMAL	±0.1			<b>A</b>	am-4136	1
TWO PLACE DECIMAL	±0.01			SCALE: 1:1		
THREE PLACE DECIMAL	±0.005			SHEET 1 OF 1		
FOUR PLACE DECIMAL	±0.0005					
MATERIAL		NAME	DATE			
FINISH		CHECKED				
		ENG APPR.				
		MFG APPR.				
DO NOT SCALE DRAWING		Q.A.				