

Ø .201 THRU (6)

R.06 (12)

Ø 1.875

Ø 2.000

Ø .430 (6)

(Ø 2.31)

A

60° (6)

Ø 1.1249
Ø 1.1241 (2)

REVISION HISTORY

REV.	DESCRIPTION	DATE	DRAWN BY
1	ORIGINAL PRINT	6/19/2019	N. LAWRENCE

SECTION A-A

.01 X 45° (5)

Ø 1.38

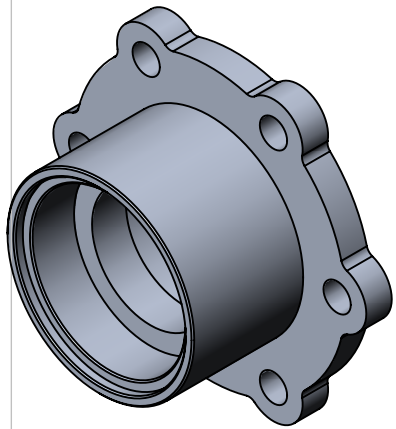
.375 (2)


Ø .86

Ø 1.250 (2)

1.000
.940
.625
.375
.188
.060
0

*** SEE CAD FOR ADDITIONAL TOOLPATH INFO***



UNLESS OTHERWISE SPECIFIED:		COMMENTS:				
DIMENSIONS ARE IN INCHES		DUAL DIMENSIONS ARE IN MILLIMETERS.				
TOLERANCES:		BREAK ALL SHARP EDGES.		TITLE:		
FRACTIONAL	±1/16			R8 BEARING HUB		
ANGULAR: MACH	±1°			SIZE	DWG. NO.	REV
ANGULAR: BEND	±5°			A	am-4117	1
ONE PLACE DECIMAL	±0.1			SCALE: 1.5:1 SHEET 1 OF 1		
TWO PLACE DECIMAL	±0.01					
THREE PLACE DECIMAL	±0.005					
FOUR PLACE DECIMAL	±0.0005					
MATERIAL	7075-T6 AL	CHECKED	NAME	DATE		
FINISH	DEBURRED	ENG APPR.	KK	6/25/19		
DO NOT SCALE DRAWING		MFG APPR.				
		Q.A.				