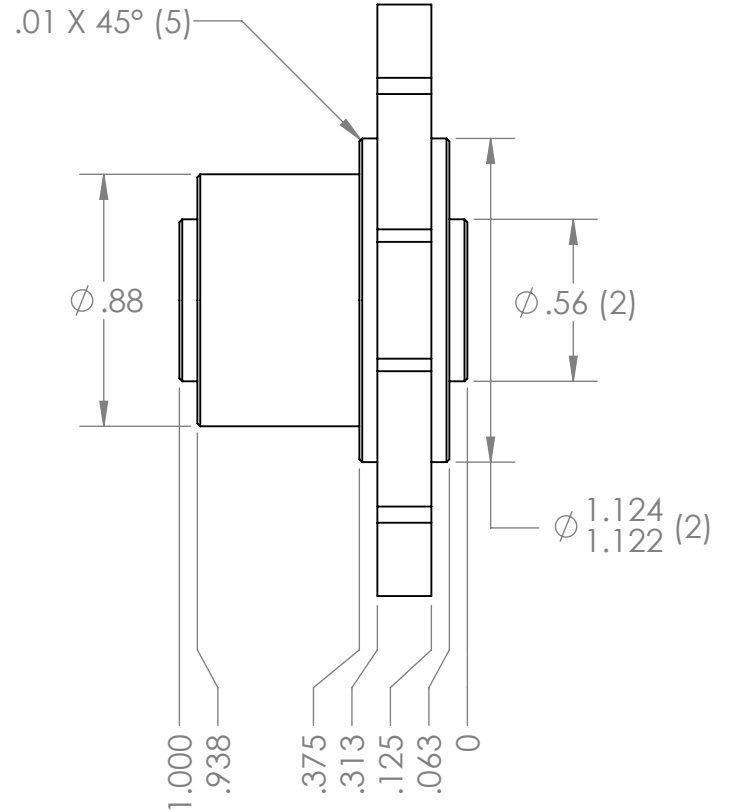
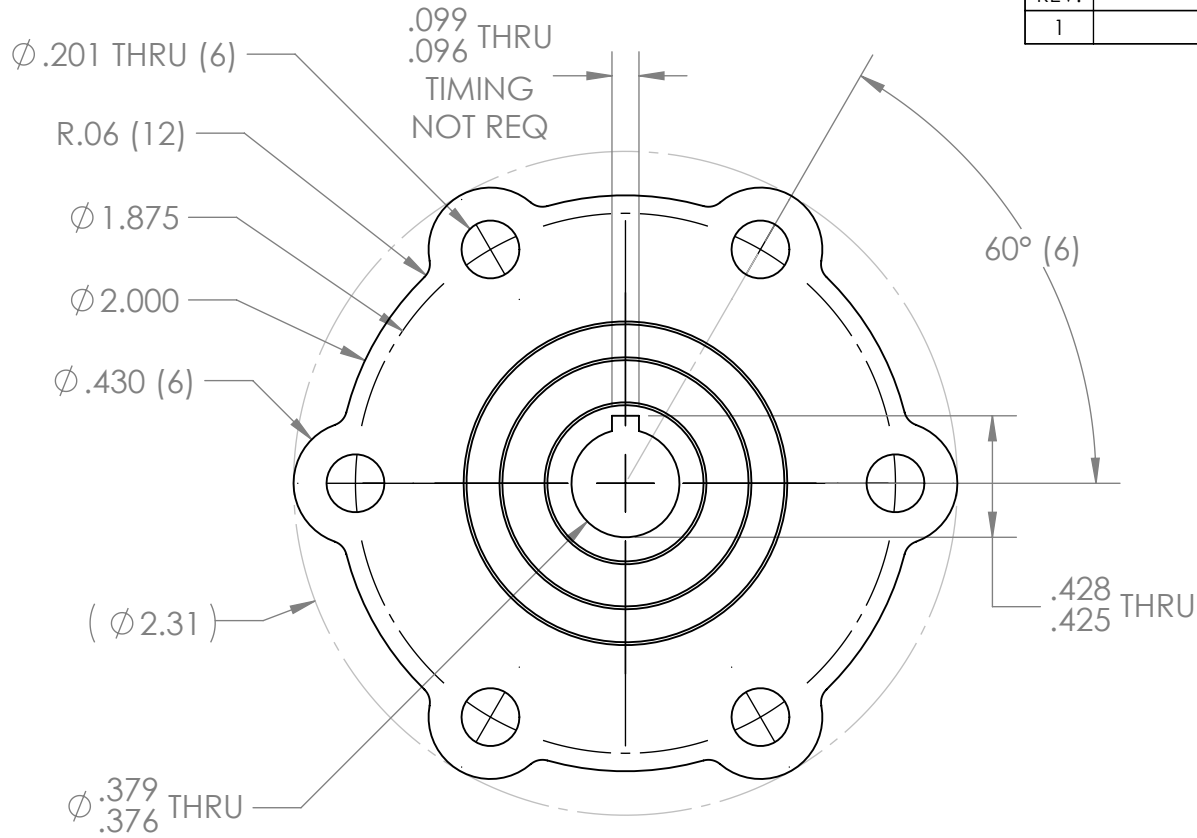
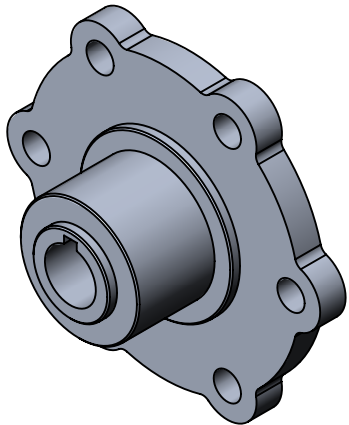



| REVISION HISTORY | | | |
|------------------|----------------|-----------|-------------|
| REV. | DESCRIPTION | DATE | DRAWN BY |
| 1 | ORIGINAL PRINT | 6/19/2019 | N. LAWRENCE |



*** SEE CAD FOR ADDITIONAL TOOLPATH INFO***



| | | | | | | |
|---------------------------------|---------|-------------------------------------|--|---|--------------|---------|
| UNLESS OTHERWISE SPECIFIED: | | COMMENTS: | |  | | |
| DIMENSIONS ARE IN INCHES | | DUAL DIMENSIONS ARE IN MILLIMETERS. | | | | |
| TOLERANCES: | | BREAK ALL SHARP EDGES. | | TITLE: | | |
| FRACTIONAL | ±1/16 | | | 375IN KEY HUB | | |
| ANGULAR: MACH | ±1° | | | | | |
| ANGULAR: BEND | ±5° | | | | | |
| ONE PLACE DECIMAL | ±0.1 | | | | | |
| TWO PLACE DECIMAL | ±0.01 | MATERIAL | | 7075-T6 AL | SIZE | A |
| THREE PLACE DECIMAL | ±0.005 | FINISH | | DEBURRED | DWG. NO. | am-4120 |
| FOUR PLACE DECIMAL | ±0.0005 | DO NOT SCALE DRAWING | | | SCALE: 1.5:1 | |
| | | CHECKED | | NAME | DATE | REV |
| | | ENG APPR. | | KK | 6/21/19 | 1 |
| | | MFG APPR. | | | | |
| | | Q.A. | | | | |
| | | | | | | |