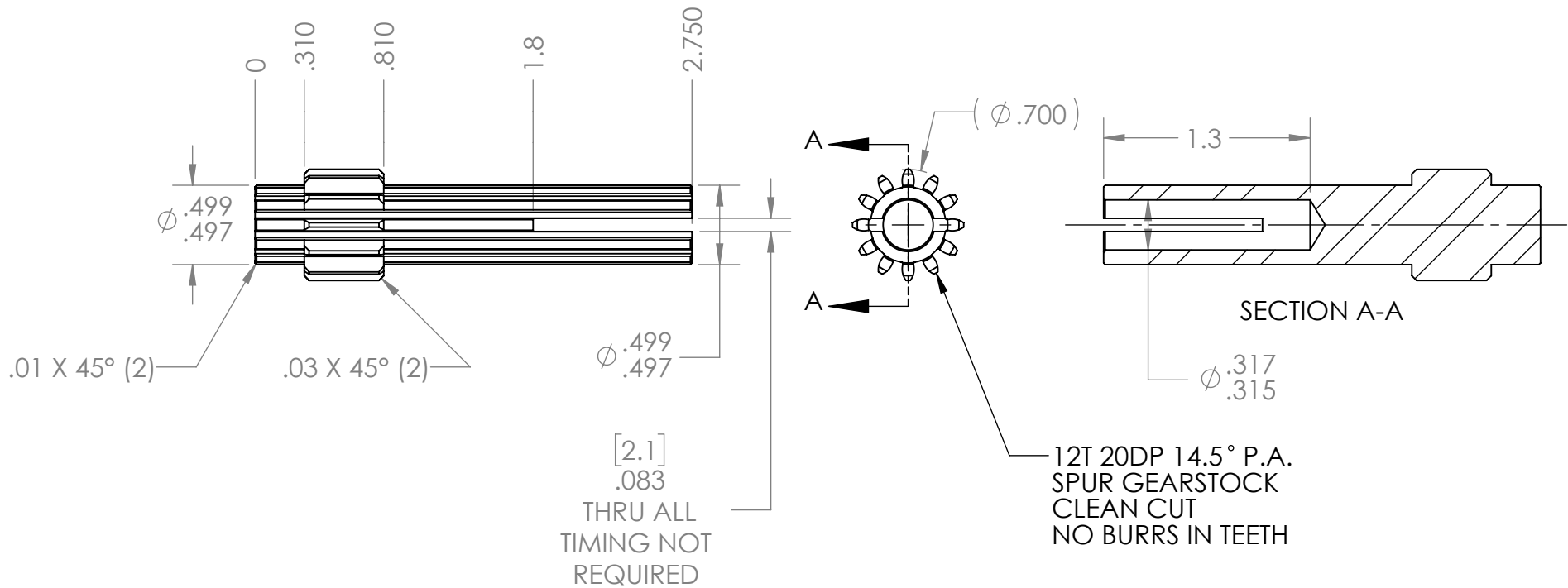
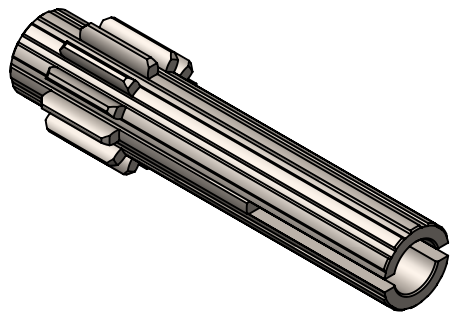



REVISION HISTORY			
REV.	DESCRIPTION	DATE	DRAWN BY
1	ORIGINAL PRINT	2014	A. BAKER
2	SLOT CHANGED TO ACCEPT 2MM KEY	6/3/2015	J. PAIKOFF
3	O.D. TOLLERANCE CHANGED	11/17/2015	N.LAWRENCE
4	UPDATED TO AMDS-1	8/19/2019	N.MASSOUDA



*** SEE CAD FOR ADDITIONAL TOOLPATH INFO***



UNLESS OTHERWISE SPECIFIED:		COMMENTS:					
DIMENSIONS ARE IN INCHES		DUAL DIMENSIONS ARE IN MILLIMETERS.					
TOLERANCES: FRACTIONAL ±1/16 ANGULAR: MACH ±1° ANGULAR: BEND ±5° ONE PLACE DECIMAL ±0.1 TWO PLACE DECIMAL ±0.01 THREE PLACE DECIMAL ±0.005 FOUR PLACE DECIMAL ±0.0005		BREAK ALL SHARP EDGES		TITLE: 12 TOOTH CIM SHAFT GEAR			
MATERIAL 4140 STEEL GEAR STOCK		CHECKED	NAME	DATE	SIZE A	DWG. NO. am-3018b	REV 4
FINISH DEBUR & ZINC PLATE		ENG APPR.			SCALE: 1:1		WEIGHT:
DO NOT SCALE DRAWING		Q.A.			SHEET 1 OF 1		