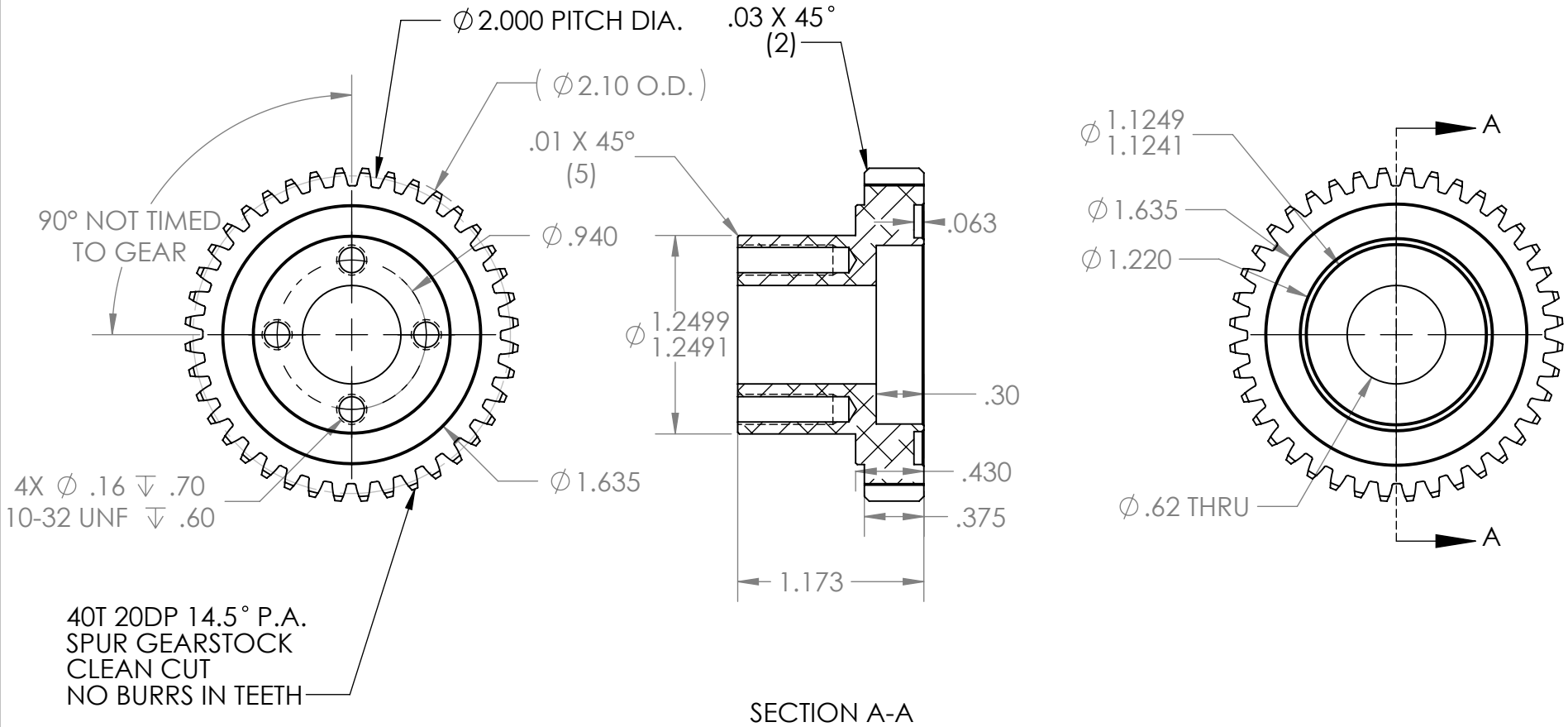
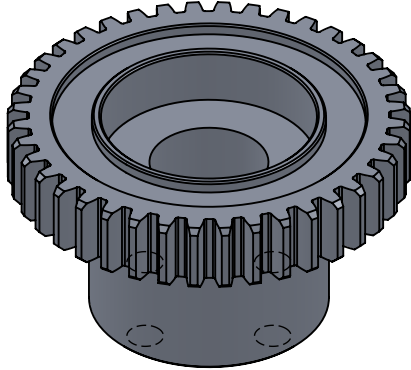


REVISION HISTORY			
REV.	DESCRIPTION	DATE	DRAWN BY
1	RE-DESIGN OF am-3013a TO USE BALL BEARING	5/24/2019	N. MASSOUDA
2	ADDED INSET RING FOR MAGENT	9/18/2019	N. MASSOUDA



\*\*\* SEE CAD FOR ADDITIONAL TOOLPATH INFO\*\*\*



UNLESS OTHERWISE SPECIFIED:		COMMENTS:			
<b>DIMENSIONS ARE IN INCHES</b>		DUAL DIMENSIONS ARE IN MILLIMETERS.			
TOLERANCES:		BREAK ALL SHARP EDGES		TITLE:	
FRACTIONAL	$\pm 1/16$			SWERVE & STEER	
ANGULAR: MACH	$\pm 1^\circ$			40T BEARING GEAR	
ANGULAR: BEND	$\pm 5^\circ$			SIZE	DWG. NO.
ONE PLACE DECIMAL	$\pm 0.1$			<b>A</b>	am-3013b
TWO PLACE DECIMAL	$\pm 0.01$			REV	2
THREE PLACE DECIMAL	$\pm 0.005$			SCALE: 1:1	WEIGHT:
FOUR PLACE DECIMAL	$\pm 0.0005$			SHEET 1 OF 1	
MATERIAL	AL 6061-T6	CHECKED	NAME	DATE	
FINISH	NITUFF ANODIZE	ENG APPR.			
DO NOT SCALE DRAWING		MFG APPR.			
		Q.A.			