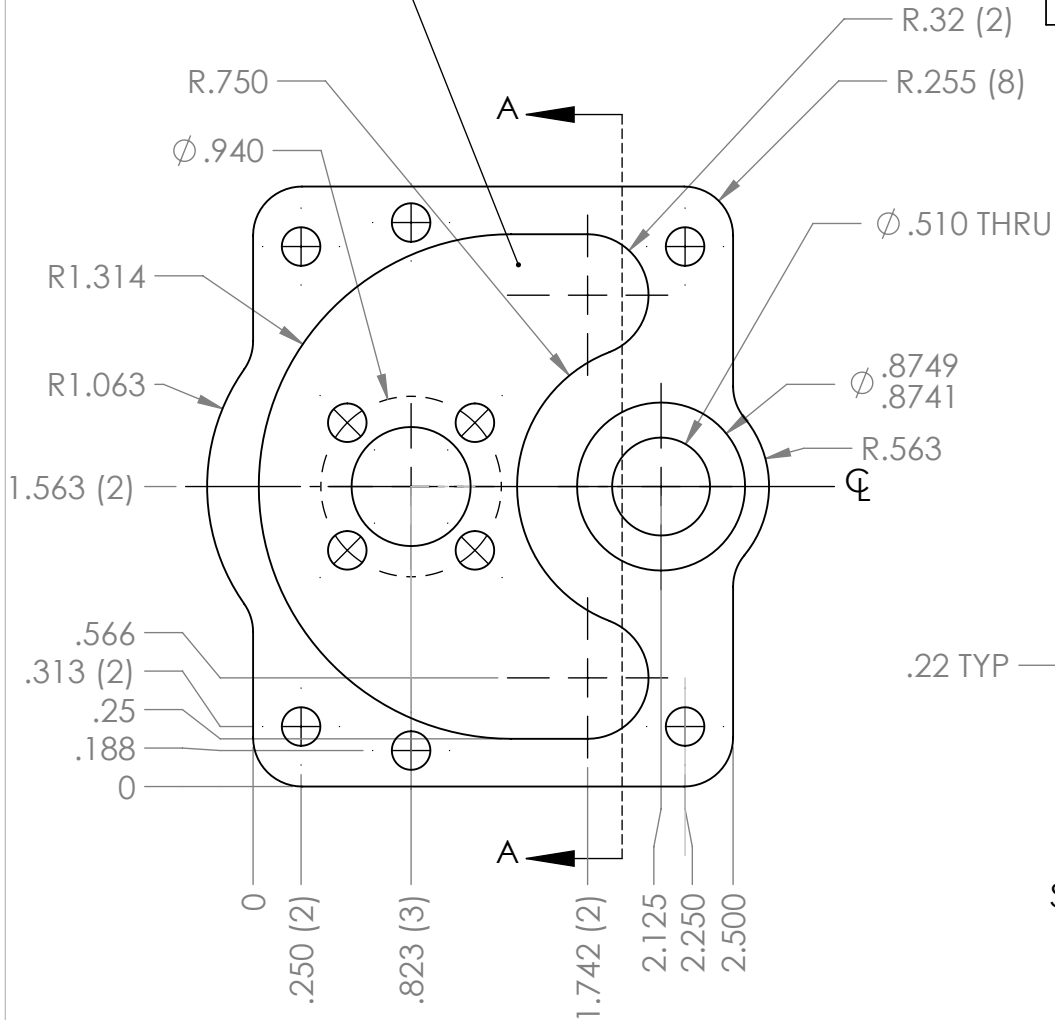
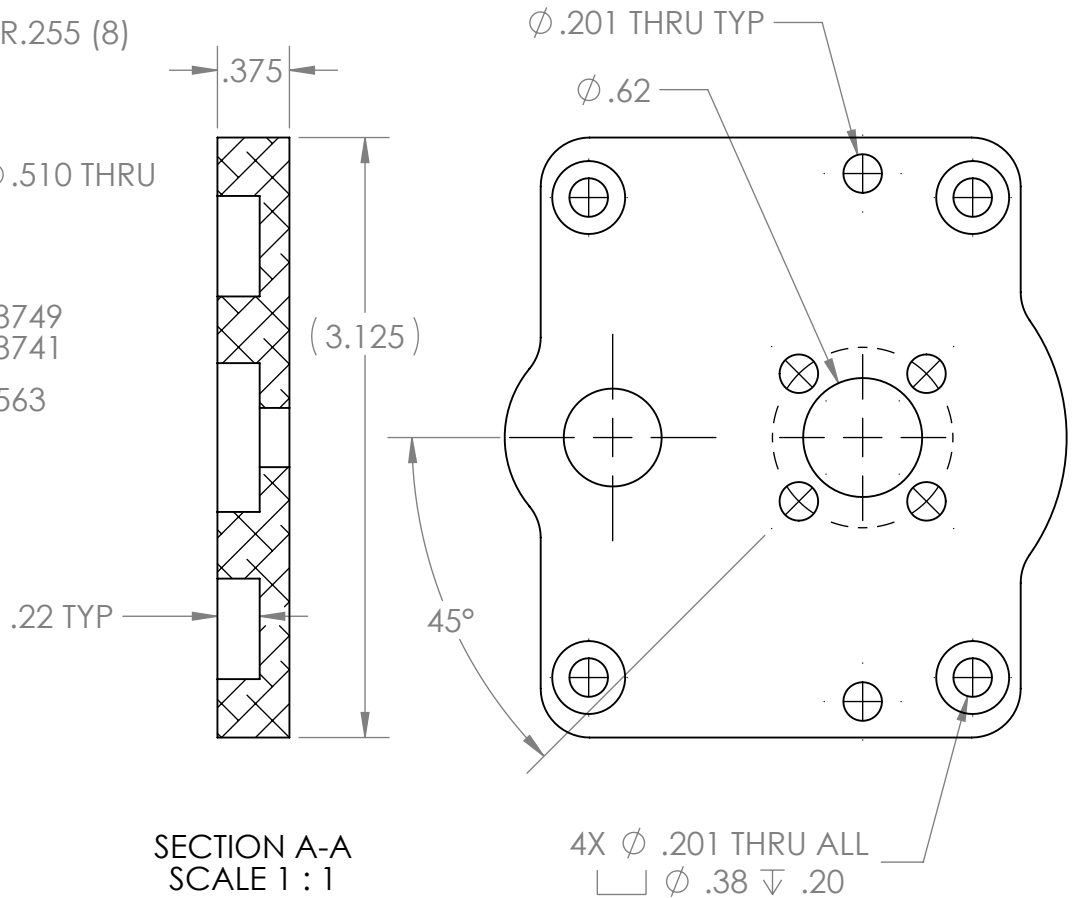


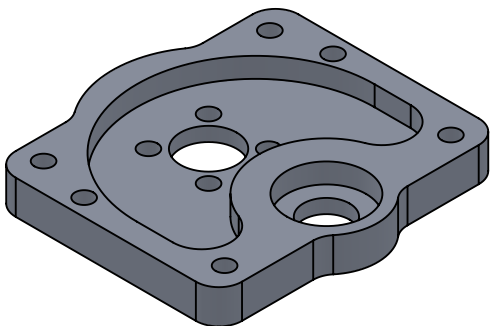
SEE CAD FOR ACCURATE  
POCKET GEOMETRY




REVISION HISTORY			
REV.	DESCRIPTION	DATE	DRAWN BY
1	ORIGINAL PRINT, REDESIGN OF am-3017	11/12/2019	N. MASSOUDA



\*\*\* SEE CAD FOR ADDITIONAL TOOLPATH INFO\*\*\*



UNLESS OTHERWISE SPECIFIED:		COMMENTS:				
<b>DIMENSIONS ARE IN INCHES</b>		DUAL DIMENSIONS ARE IN MILLIMETERS.				
TOLERANCES: FRACTIONAL ±1/16 ANGULAR: MACH ±1° ANGULAR: BEND ±5° ONE PLACE DECIMAL ±0.1 TWO PLACE DECIMAL ±0.01 THREE PLACE DECIMAL ±0.005 FOUR PLACE DECIMAL ±0.0005		BREAK ALL SHARP EDGES		SIZE DWG. NO. REV		
MATERIAL 6061 AL		CHECKED	NAME	DATE	A am-3017a 1	
FINISH TUMBLER		ENG APPR.				
DO NOT SCALE DRAWING		MFG APPR.				
		Q.A.			SCALE: 1:1	WEIGHT: SHEET 1 OF 1