

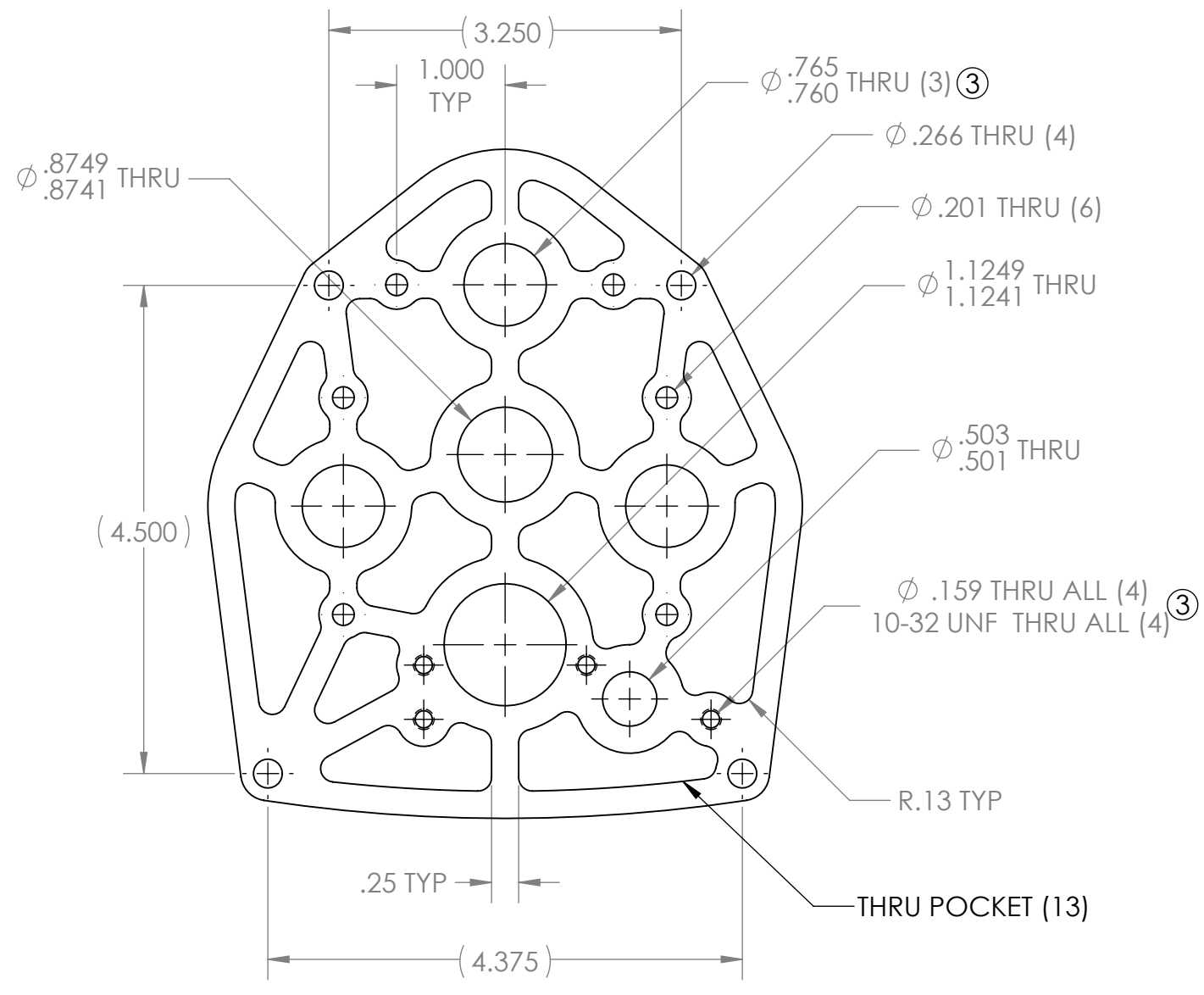
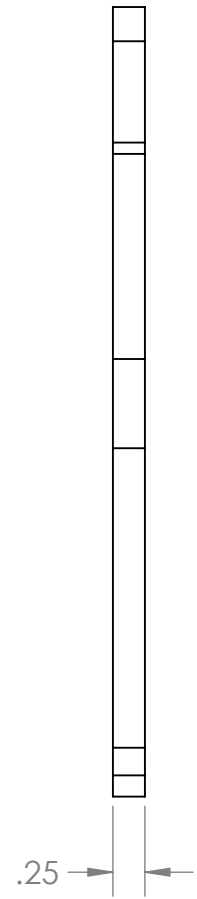
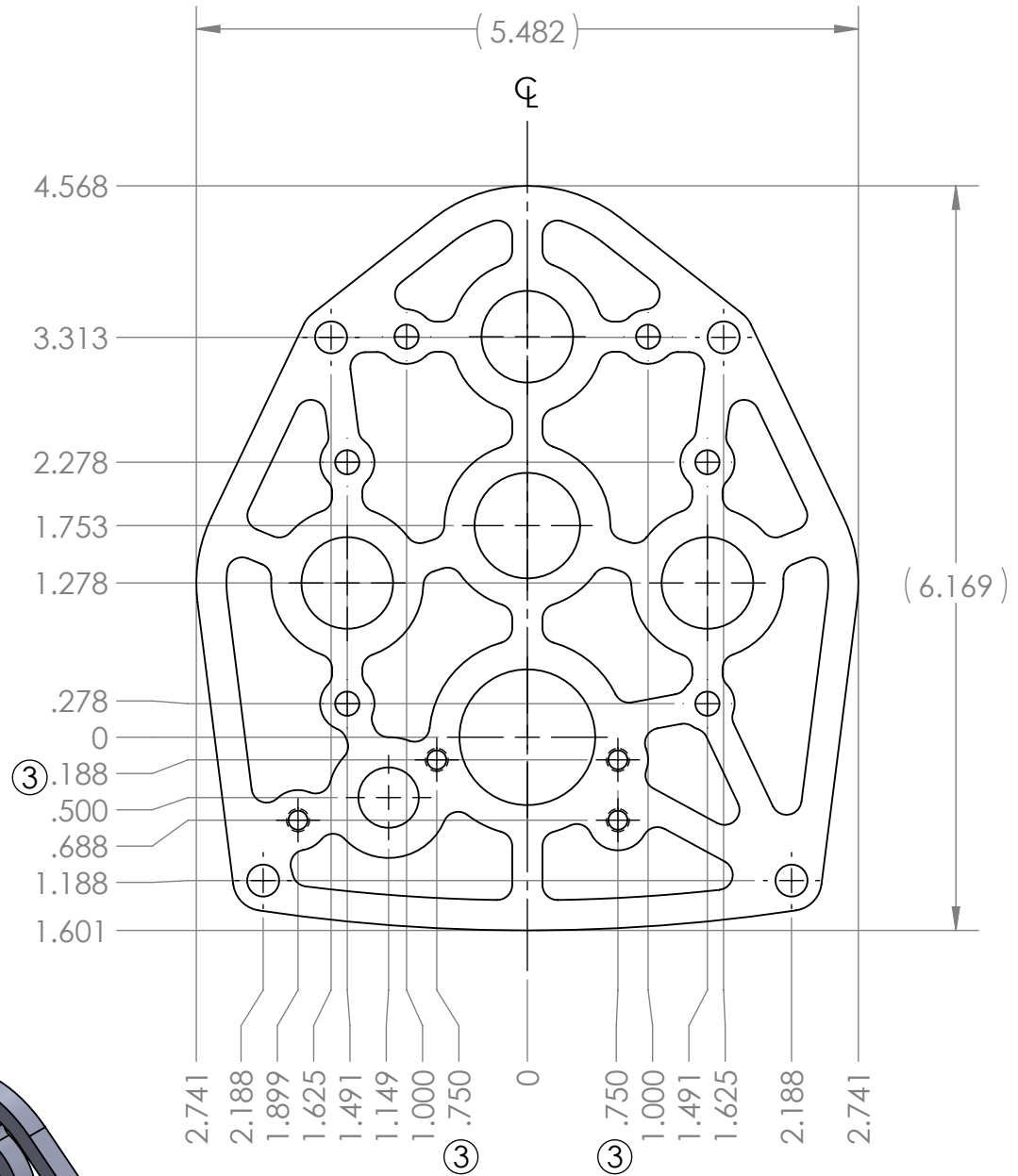
4

3

2

1

REVISION HISTORY			
REV.	DESCRIPTION	DATE	DRAWN BY
1	ORIGINAL PRINT	1/6/2017	N. LAWRENCE
2	INCREASED CIM HOLE DIAMETER	2/20/2018	N. LAWRENCE
3	INCREASED CIM HOLE DIAMETER, ADD TWO TAP HOLES, ADD "A" TO PN.	10/7/2019	N. LAWRENCE

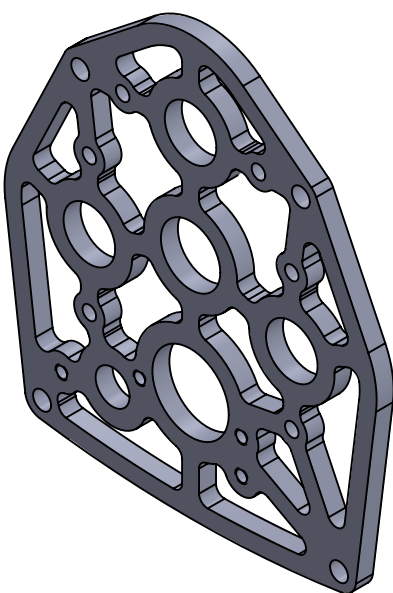


B


B

A

A



*** SEE CAD FOR ADDITIONAL TOOLPATH INFO***

UNLESS OTHERWISE SPECIFIED:		COMMENTS:			
DIMENSIONS ARE IN INCHES		DUAL DIMENSIONS ARE IN MILLIMETERS.			
TOLERANCES:		BREAK ALL SHARP EDGES.		TITLE:	
FRACTIONAL	±1/16			EVO SHIFTER	
ANGULAR: MACH	±1°			2 STAGE 3 MOTOR PLATE	
ANGULAR: BEND	±5°			SIZE DWG. NO. REV	
ONE PLACE DECIMAL	±0.1			B am-3527a 3	
TWO PLACE DECIMAL	±0.01			SCALE: 1:1.5 SHEET 1 OF 1	
THREE PLACE DECIMAL	±0.005				
FOUR PLACE DECIMAL	±0.0005				
MATERIAL	6061-T6 AL	CHECKED	NAME	DATE	
FINISH	TUMBLED	ENG APPR.	KK	10/7/19	
DO NOT SCALE DRAWING		MFG APPR.			
		Q.A.			

4

3

2

1