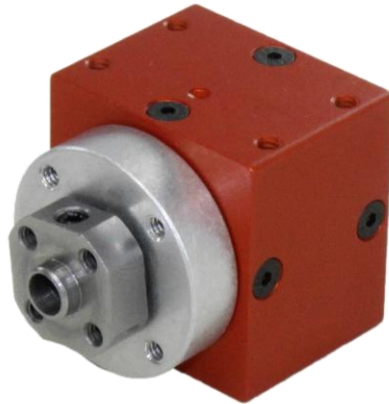


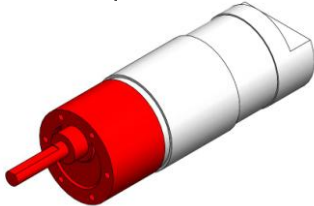
# NeveRest Sport

## Motor Installation Guide

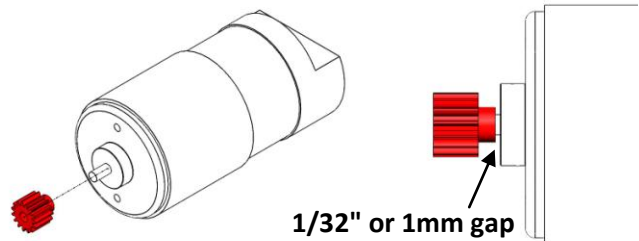


## Motor Assembly

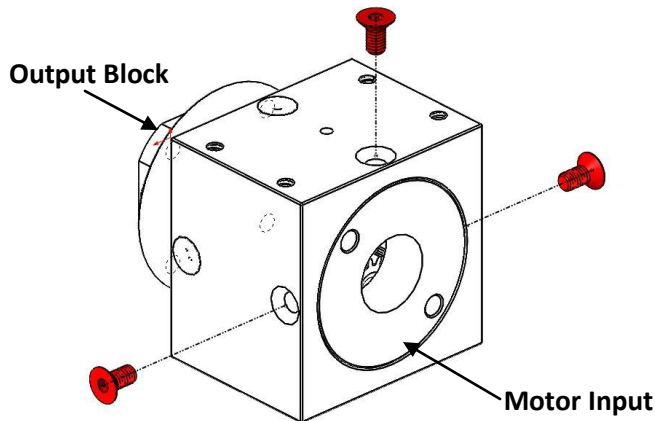
**Step 1:** Remove the attached gearbox (if applicable) from the NeveRest Motor via the Phillips head screws on the front face of the gearbox. Be sure to also remove the helical pinion gear attached to the motor shaft as well as the adapter plate attached with Phillips head screws.



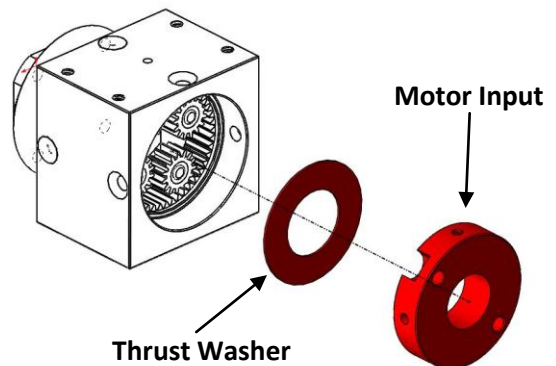
**Step 2:** Carefully press the pinion provided with the NeveRest Sport gearbox onto the NeveRest Motor. Be sure to leave a small (~1/32" or 1mm) gap between the pinion and the output shaft bushing.



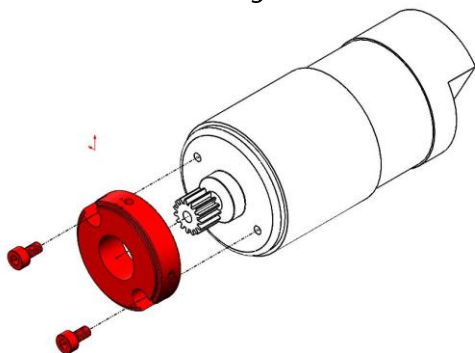
**Step 1:** Remove the three M3 flat head screws from the Motor Input side of the gearbox, which is opposite of the Output Block assembly.



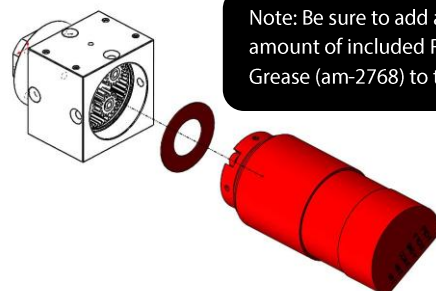
**Step 2:** Remove the Motor Input Block and the steel Thrust Washer. Set the Thrust Washer aside on a clean shop towel or paper towel.



**Step 3:** Attach the Motor Input Block to the NeveRest Motor (with previously attached pinion) using the included M3-0.5 Socket Head Screws and lock washers. Be sure to install the Motor Input Block with the flat side against the motor.



**Step 4:** Reinstall the Thrust Washer into the NeveRest Sport onto the surface of the gears inside the gearbox. Insert the Motor Assembly into the gearbox, and gently turn the output shaft until the gears mesh.



Note: Be sure to add a pea-sized amount of included Red Tacky Grease (am-2768) to the gear teeth.

**Step 5:** Align the tapped holes on the circumference of the Motor Input Block and reinstall the M3 flat head screws to secure the Motor Assembly.

