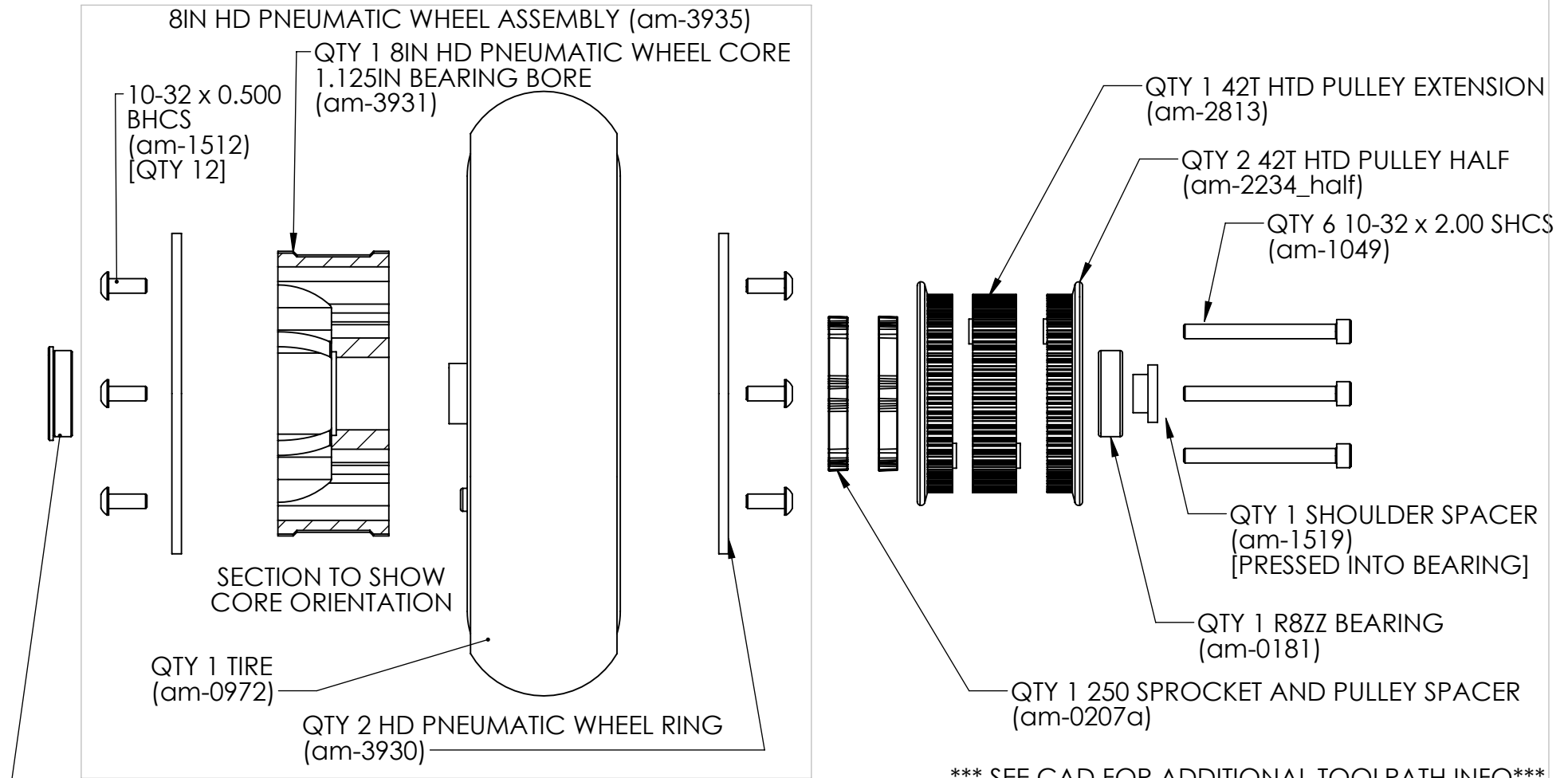
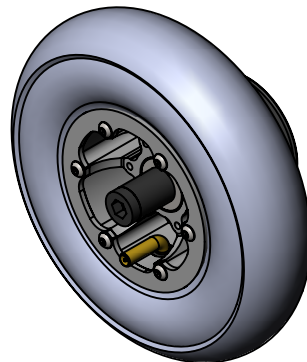


NOTE: BUILD WHEEL ASSEMBLY FIRST,
THEN ATTACH MOTION HARDWARE

REVISION HISTORY			
REV.	DESCRIPTION	DATE	DRAWN BY
1	ORIGINAL PRINT	1/11/2019	N. LAWRENCE



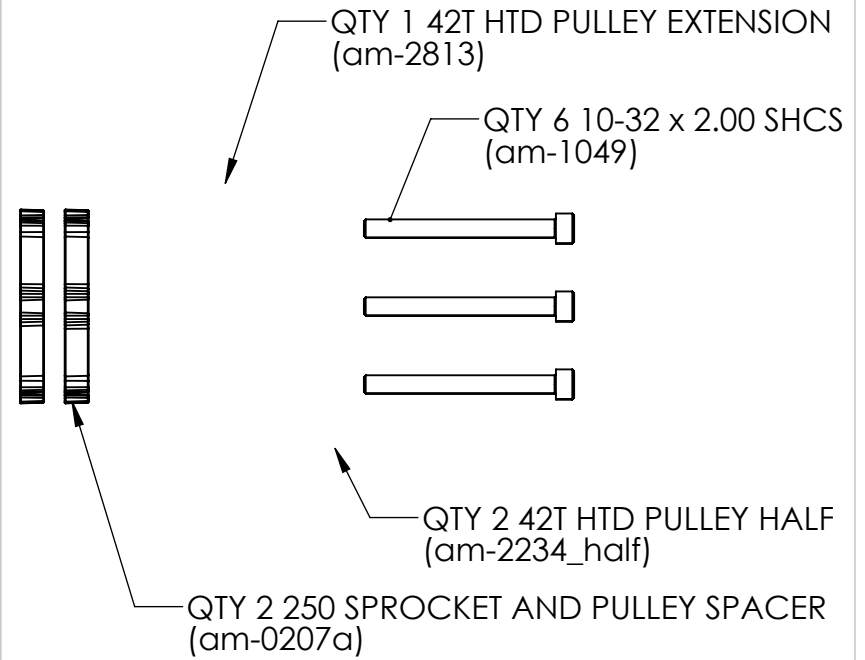
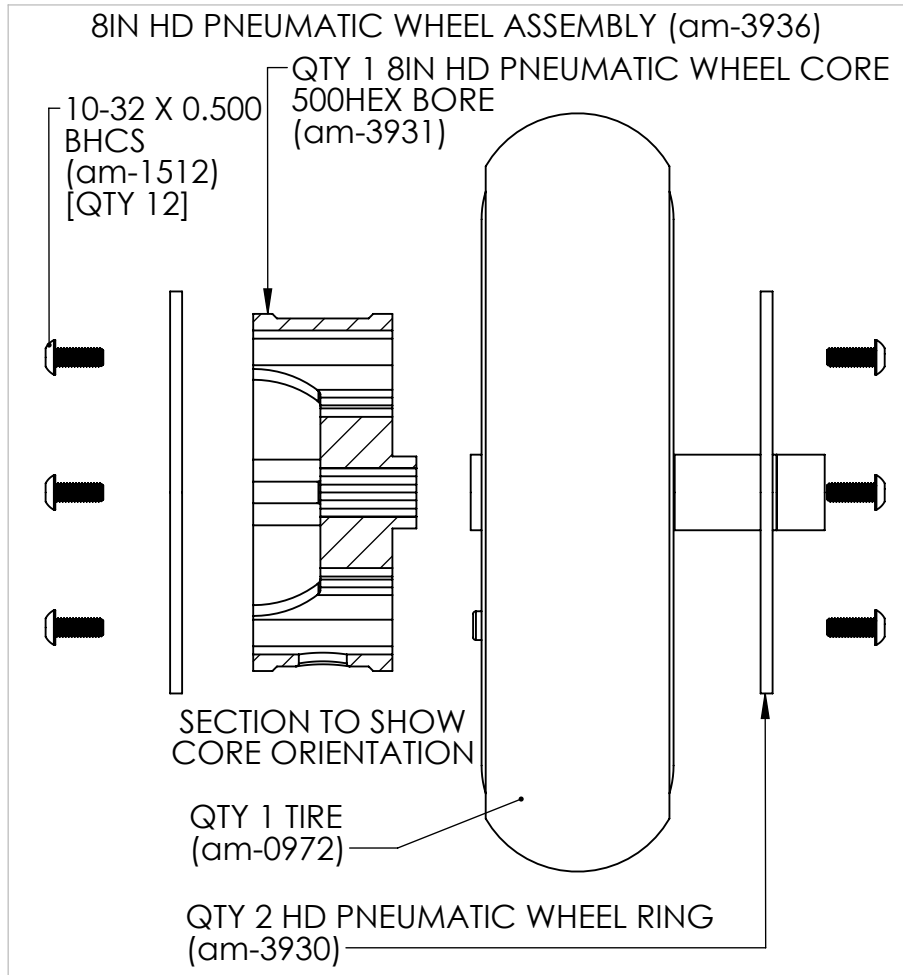
*** SEE CAD FOR ADDITIONAL TOOLPATH INFO***



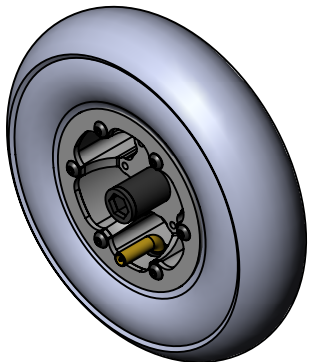
UNLESS OTHERWISE SPECIFIED:		COMMENTS:				
DIMENSIONS ARE IN INCHES		DUAL DIMENSIONS ARE IN MILLIMETERS.				
TOLERANCES: FRACTIONAL ±1/16 ANGULAR: MACH ±1° ANGULAR: BEND ±5° ONE PLACE DECIMAL ±0.1 TWO PLACE DECIMAL ±0.01 THREE PLACE DECIMAL ±0.005 FOUR PLACE DECIMAL ±0.0005		BREAK ALL SHARP EDGES.		AM14U4 PN8_HD CORNER WHEEL ASSEMBLY		
MATERIAL		NAME		SIZE	DWG. NO.	REV
FINISH		CHECKED		A	am-14U4_PN8_HD	2
DO NOT SCALE DRAWING		ENG APPR.		SCALE: 1:2		SHEET 1 OF 3
		MFG APPR.				
		Q.A.				

NOTE: BUILD WHEEL ASSEMBLY FIRST,
THEN ATTACH MOTION HARDWARE

REVISION HISTORY			
REV.	DESCRIPTION	DATE	DRAWN
1	ORIGINAL PRINT	1/11/2019	N. LAWRENCE



*** SEE CAD FOR ADDITIONAL TOOLPATH INFO***



UNLESS OTHERWISE SPECIFIED:

DIMENSIONS ARE IN INCHES

TOLERANCES:	
FRACTIONAL	±1/16
ANGULAR: MACH	±1°
ANGULAR: BEND	±5°
ONE PLACE DECIMAL	±0.1
TWO PLACE DECIMAL	±0.01
THREE PLACE DECIMAL	±0.005
FOUR PLACE DECIMAL	±0.0005

MATERIAL

FINISH

DO NOT SCALE DRAWING

COMMENTS:

DUAL DIMENSIONS ARE IN MILLIMETERS.

BREAK ALL SHARP EDGES

	NAME	DATE
CHECKED		
ENG APPR.		
MFG APPR.		
Q.A.		



TITLE:

AM14U4 PN8_HD
CENTRE WHEEL ASSEMBLY

SIZE	DWG. NO.	REV
A	am-14U4_PN8_HD	2
SCALE: 1:2	WEIGHT:	SHEET 2 OF 3

4

3

2

1

REVISION HISTORY			
REV.	DESCRIPTION	DATE	DRAWN
1	ORIGINAL PRINT	1/11/2019	N. LAWRENCE
2	ADJUSTED CENTRE WHEEL SPACER LAYOUT	1/22/2020	N. LAWRENCE

QTY 8 1/4-20 x 0.75 TFS
(am-1310)

QTY 2 3/8-16 NYLOCK NUT
(am-1054)

QTY 1 500HEX x 0.063 SPACER
(am-3948-063)

QTY 1 TOUGHBOX LONG SHAFT
(am-0801a)

QTY 1 500HEX x 0.500 SPACER
(am-3948-500)

QTY 1 CENTRE WHEEL ASSEMBLY
(PAGE 2)

QTY 2 500HEX x 1.000 SPACER
(am-3948-1000)

QTY 2 755-5M-15 BELT
(am-3660)

QTY 2 CORNER WHEEL ASSEMBLY
(PAGE 1)

QTY 4 CHURRO CUT TO 3.875" LONG
CUT FROM (am-3101-1)

QTY 2 375HEX x 1.000 SPACER
(am-3947-1000)

QTY 2 375HEX x 0.250 SPACER
(am-3947-250)

QTY 1 500HEX x 0.125 SPACER
(am-3948-125)

QTY 1 500 HEXHD BEARING
(am-2986)

QTY 2 3/8-16 x 4.75" AXLE BOLT
(am-1395)

AXLE AND CHURRO LOCATIONS

32.0

6.035

2.975

Ø7.9

*** SEE CAD FOR ADDITIONAL TOOLPATH INFO***

UNLESS OTHERWISE SPECIFIED:		COMMENTS:	
DIMENSIONS ARE IN INCHES		DUAL DIMENSIONS ARE IN MILLIMETERS.	
TOLERANCES:		BREAK ALL SHARP EDGES.	
FRACTIONAL	±1/16		
ANGULAR: MACH	±1°		
ANGULAR: BEND	±5°		
ONE PLACE DECIMAL	±0.1		
TWO PLACE DECIMAL	±0.01		
THREE PLACE DECIMAL	±0.005		
FOUR PLACE DECIMAL	±0.0005		
MATERIAL		NAME	DATE
FINISH		CHECKED	
		ENG APPR.	
		MFG APPR.	
DO NOT SCALE DRAWING		Q.A.	



TITLE:
**AM14U4 PN8_HD
POWERTRAIN LAYOUT**

SIZE	DWG. NO.	REV
B	am-14U4_PN8_HD	2
SCALE: 1:4		SHEET 3 OF 3

4

3

2

1

B

B

A

A