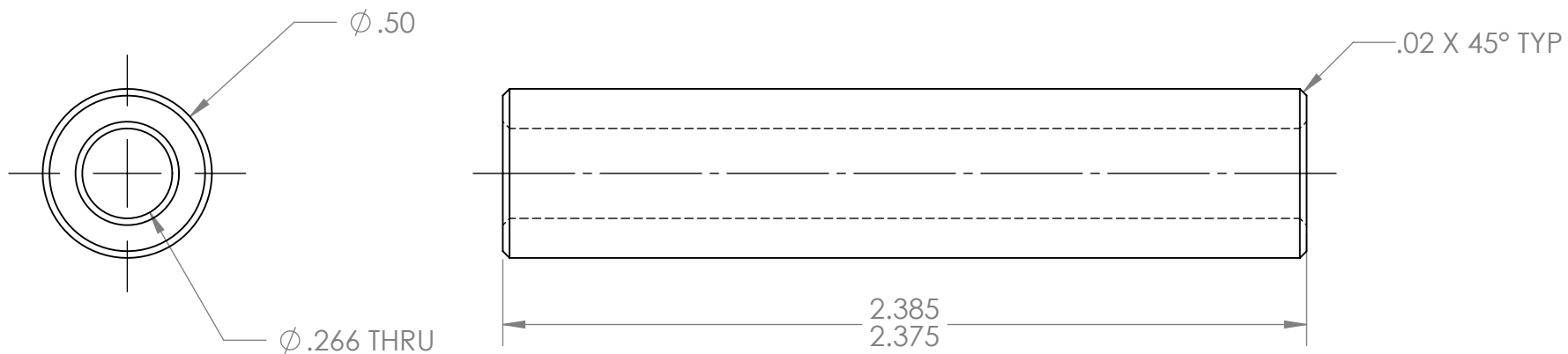
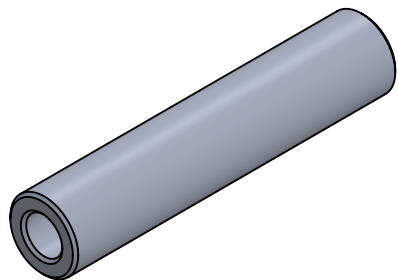



REVISION HISTORY			
REV.	DESCRIPTION	DATE	DRAWN BY
1	ORIGINAL PRINT	12/16/2016	N. LAWRENCE
2	MATERIAL NOW CHURRO, LENGTH TOL UPDATED	1/5/2017	N. LAWRENCE
3	DRAWN TO MEET AMDS-1	8/10/2018	A. SHORES
4	REVERTED MATERIAL TO ROUND STOCK	2/19/2020	N. MASSOUDA



\*\*\* SEE CAD FOR ADDITIONAL TOOLPATH INFO\*\*\*



UNLESS OTHERWISE SPECIFIED:		COMMENTS:				
<b>DIMENSIONS ARE IN INCHES</b>		DUAL DIMENSIONS ARE IN MILLIMETERS.				
TOLERANCES:		BREAK ALL SHARP EDGES		TITLE:		
FRACTIONAL	$\pm 1/16$			EVO SHIFTER 2		
ANGULAR: MACH	$\pm 1^\circ$			STAGE SPACER		
ANGULAR: BEND	$\pm 5^\circ$			SIZE		
ONE PLACE DECIMAL	$\pm 0.1$			DWG. NO.		
TWO PLACE DECIMAL	$\pm 0.01$			A am-3546		
THREE PLACE DECIMAL	$\pm 0.005$			REV		
FOUR PLACE DECIMAL	$\pm 0.0005$			4		
MATERIAL				SCALE: 2:1		
AL6061				WEIGHT:		
FINISH				SHEET 1 OF 1		
TUMBLLED						
DO NOT SCALE DRAWING						