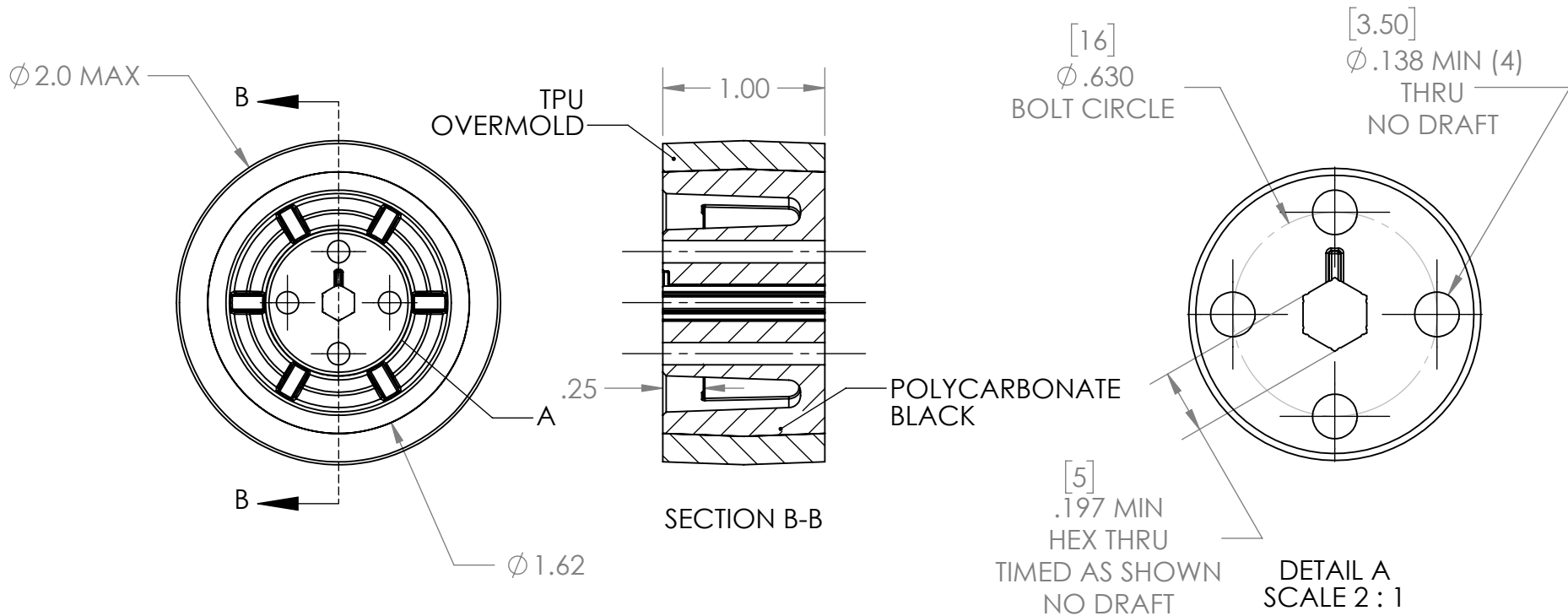
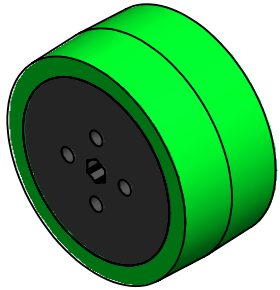



| REVISION HISTORY | | | |
|------------------|-------------------------------|------------|--------------|
| REV. | DESCRIPTION | DATE | DRAWN BY |
| 1 | ORIGINAL PRINT | 9/26/2017 | D. BLAU |
| 2 | DRAWN TO MEET AMDS-1 | 7/9/2018 | B. HODSON |
| 3 | REMOVED TABLE, ADDED ISO VIEW | 9/4/2019 | N. LAWRENCE |
| 4 | FIXED HEX TIMING | 10/28/2019 | K. KOLODZIEJ |



*** SEE CAD FOR ADDITIONAL TOOLPATH INFO***



| UNLESS OTHERWISE SPECIFIED: | | COMMENTS: | |  | | |
|---------------------------------|---------------|-----------------------------------------------------------|------|---------------------------------------------------------------------------------------|------------|--------------|
| DIMENSIONS ARE IN INCHES | | DUAL DIMENSIONS ARE IN MILLIMETERS. | | TITLE: | | |
| TOLERANCES: | | BREAK ALL SHARP EDGES. | | 2IN 5mm HEX BORE | | |
| FRACTIONAL | $\pm 1/16$ | 2° DRAFT APPLIED TO MOST SURFACES UNLESS OTHERWISE NOTED. | | STEALTH WHEEL | | |
| ANGULAR: MACH | $\pm 1^\circ$ | CHECKED | NAME | DATE | SIZE | DWG. NO. |
| ANGULAR: BEND | $\pm 5^\circ$ | ENG APPR. | NL | 10/29/19 | A | am-3664 |
| ONE PLACE DECIMAL | ± 0.1 | MFG APPR. | | | | REV |
| TWO PLACE DECIMAL | ± 0.01 | Q.A. | | | | 4 |
| THREE PLACE DECIMAL | ± 0.005 | | | | SCALE: 1:1 | SHEET 1 OF 1 |
| FOUR PLACE DECIMAL | ± 0.0005 | | | | | |
| MATERIAL | PC BORE | | | | | |
| | TPU OVERMOLD | | | | | |
| FINISH | DEBURRED | | | | | |
| DO NOT SCALE DRAWING | | | | | | |