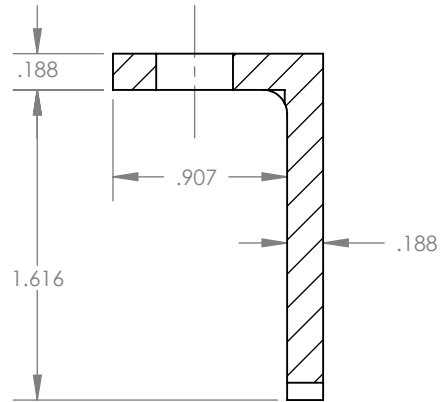
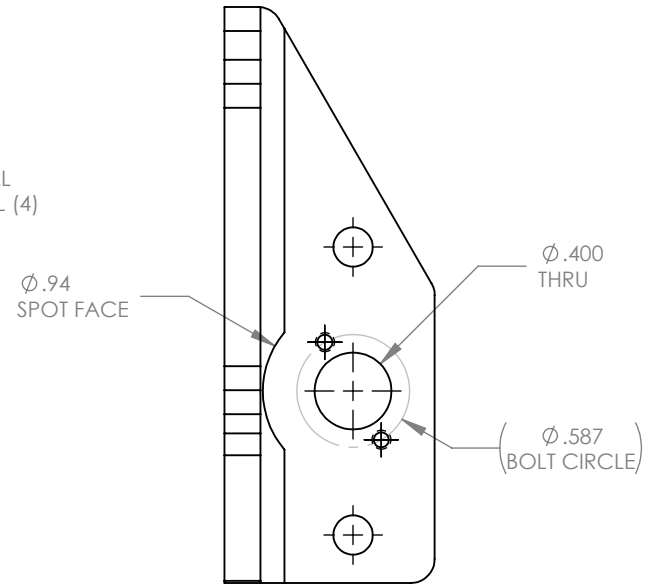
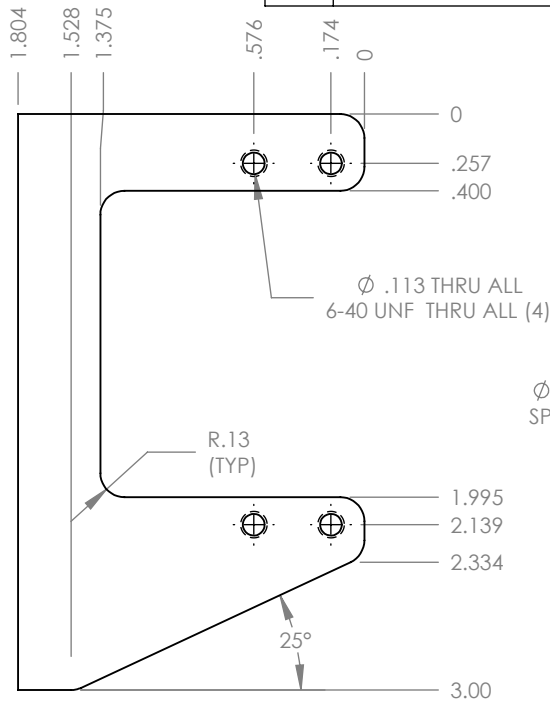
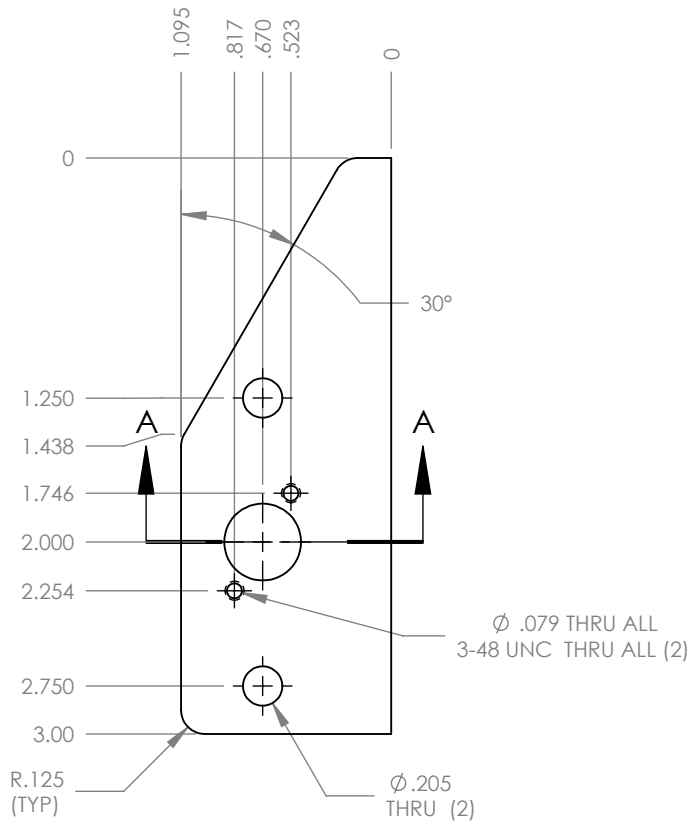
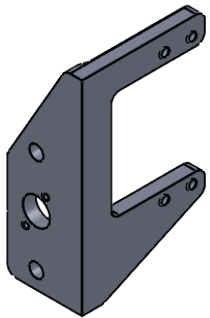


REVISION HISTORY			
REV.	DESCRIPTION	DATE	DRAWN BY
3	"MANY CHANGES"	10/10/2008	A. BAKER
4	DRAWN TO MEET AMDS-1	7/3/2018	A. SHORES



SECTION A-A
SCALE 1 : 1



*** SEE CAD FOR ADDITIONAL TOOLPATH INFO***

UNLESS OTHERWISE SPECIFIED:		COMMENTS:	
DIMENSIONS ARE IN INCHES		DUAL DIMENSIONS ARE IN MILLIMETERS.	
TOLERANCES:		BREAK ALL SHARP EDGES	
FRACTIONAL	$\pm 1/16$		
ANGULAR: MACH	$\pm 1^\circ$		
ANGULAR: BEND	$\pm 5^\circ$		
ONE PLACE DECIMAL	± 0.1		
TWO PLACE DECIMAL	± 0.01		
THREE PLACE DECIMAL	± 0.005		
FOUR PLACE DECIMAL	± 0.0005		
MATERIAL	6061-T6 AL	NAME	DATE
FINISH	TUMBLER	CHECKED	
		ENG APPR.	
		MFG APPR.	
DO NOT SCALE DRAWING		Q.A.	



TITLE: SUPER SHIFTER,
ENCODER BRACKET

SIZE	DWG. NO.	REV
A	am-0574	4
SCALE: 1:2	WEIGHT:	SHEET 1 OF 1