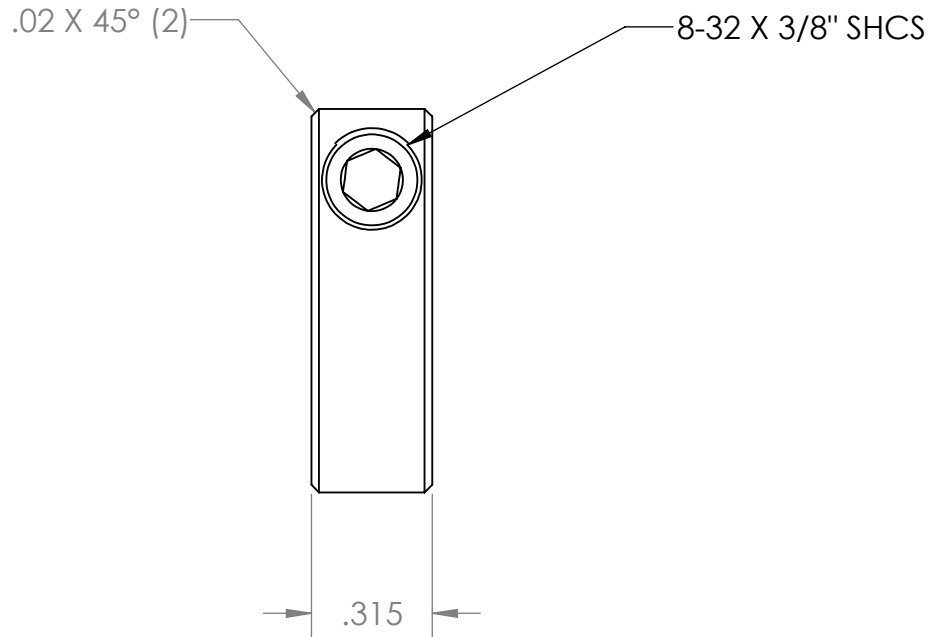
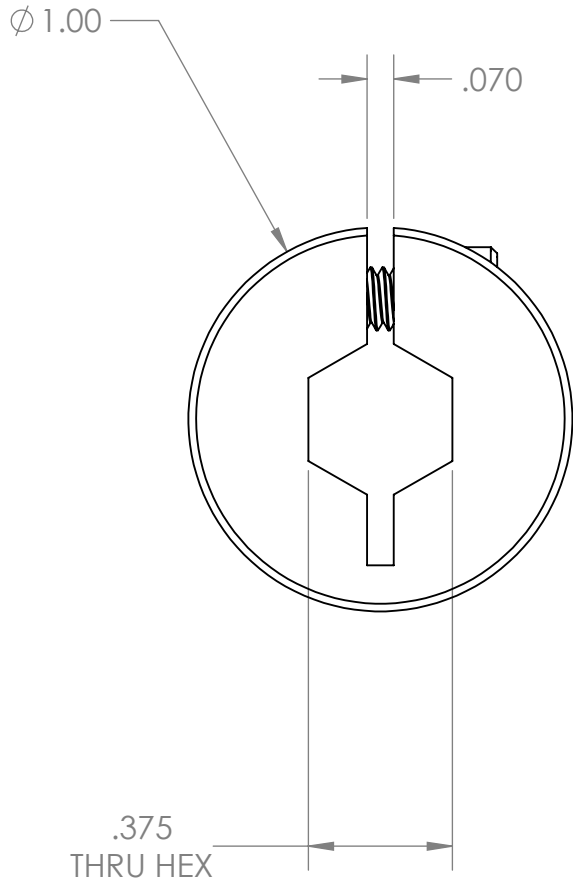



REVISION HISTORY			
REV.	DESCRIPTION	DATE	DRAWN BY
1	ORIGINAL PRINT	7/10/2014	R. BAKER
2	DRAWN TO MEET AMDS-1	5/11/2018	B. HODSON



*** SEE CAD FOR ADDITIONAL TOOLPATH INFO***

UNLESS OTHERWISE SPECIFIED:		COMMENTS:					
DIMENSIONS ARE IN INCHES		DUAL DIMENSIONS ARE IN MILLIMETERS.					
TOLERANCES: FRACTIONAL $\pm 1/16$ ANGULAR: MACH $\pm 1^\circ$ ANGULAR: BEND $\pm 5^\circ$ ONE PLACE DECIMAL ± 0.1 TWO PLACE DECIMAL ± 0.01 THREE PLACE DECIMAL ± 0.005 FOUR PLACE DECIMAL ± 0.0005		BREAK ALL SHARP EDGES.		TITLE:			
MATERIAL CLAMP: AL SCREW: STL				COLLAR CLAMP, 3/8" HEX BORE			
FINISH		CHECKED	NAME	DATE	SIZE	DWG. NO.	REV
DO NOT SCALE DRAWING		ENG APPR.			A	am-2300	2
		MFG APPR.			SCALE: 2:1		SHEET 1 OF 1
		Q.A.					