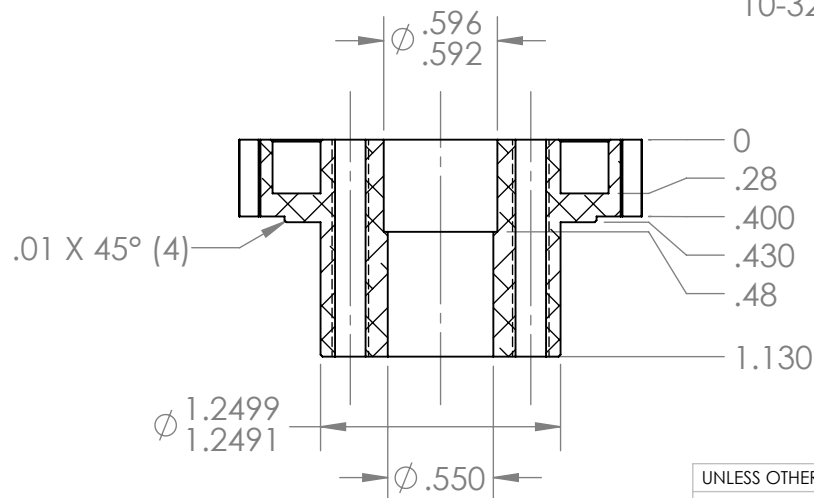
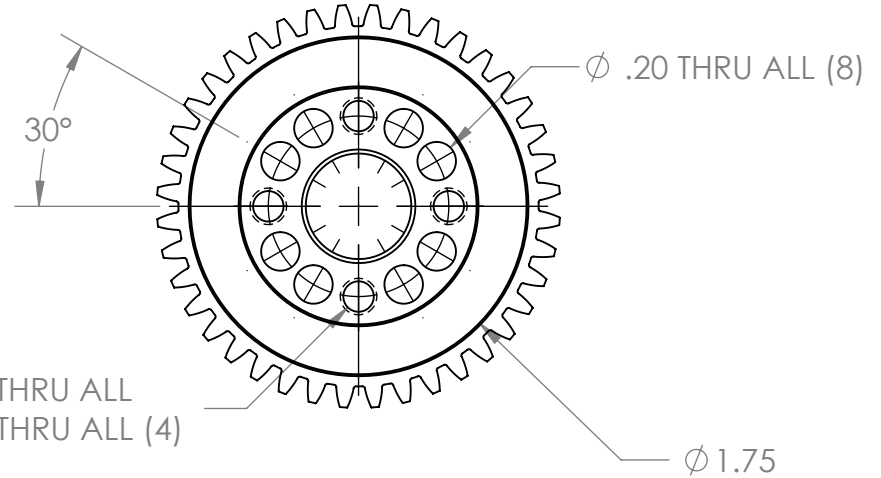
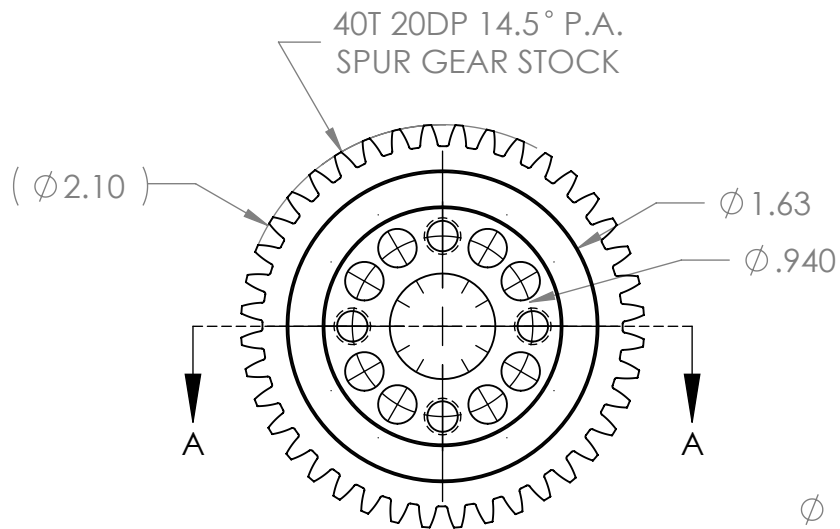
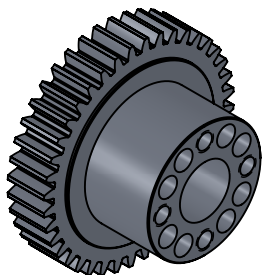


REVISION HISTORY			
REV.	DESCRIPTION	DATE	DRAWN BY
1	ORIGINAL PRINT	2014	A. BAKER
2	REMOVED LOWER BUSHING POCKET	1/26/2016	J.ANG
3	UPDATED TO MEET AMDS-1	8/22/2018	A. BIRKEN
4	INCREASED SIZE OF BEARING SEAT	10/3/2018	N.MASSOUDA



SECTION A-A

TIMING OF GEAR TEETH NOT REQUIRED
 *** SEE CAD FOR ADDITIONAL TOOLPATH INFO***



UNLESS OTHERWISE SPECIFIED:		COMMENTS:	
DIMENSIONS ARE IN INCHES		DUAL DIMENSIONS ARE IN MILLIMETERS.	
TOLERANCES:		BREAK ALL SHARP EDGES.	
FRACTIONAL	±1/16		
ANGULAR: MACH	±1°		
ANGULAR: BEND	±5°		
ONE PLACE DECIMAL	±0.1		
TWO PLACE DECIMAL	±0.01		
THREE PLACE DECIMAL	±0.005		
FOUR PLACE DECIMAL	±0.0005		
MATERIAL	6061-T6 AL	NAME	DATE
FINISH	NITUFF ANODIZED	CHECKED	NL 10/9/18
DO NOT SCALE DRAWING		ENG APPR.	
		MFG APPR.	
		Q.A.	



TITLE:
**SWERVE & STEER
 40T STEER GEAR**

SIZE	DWG. NO.	REV
A	am-3013a	4
SCALE: 1:1		SHEET 1 OF 1