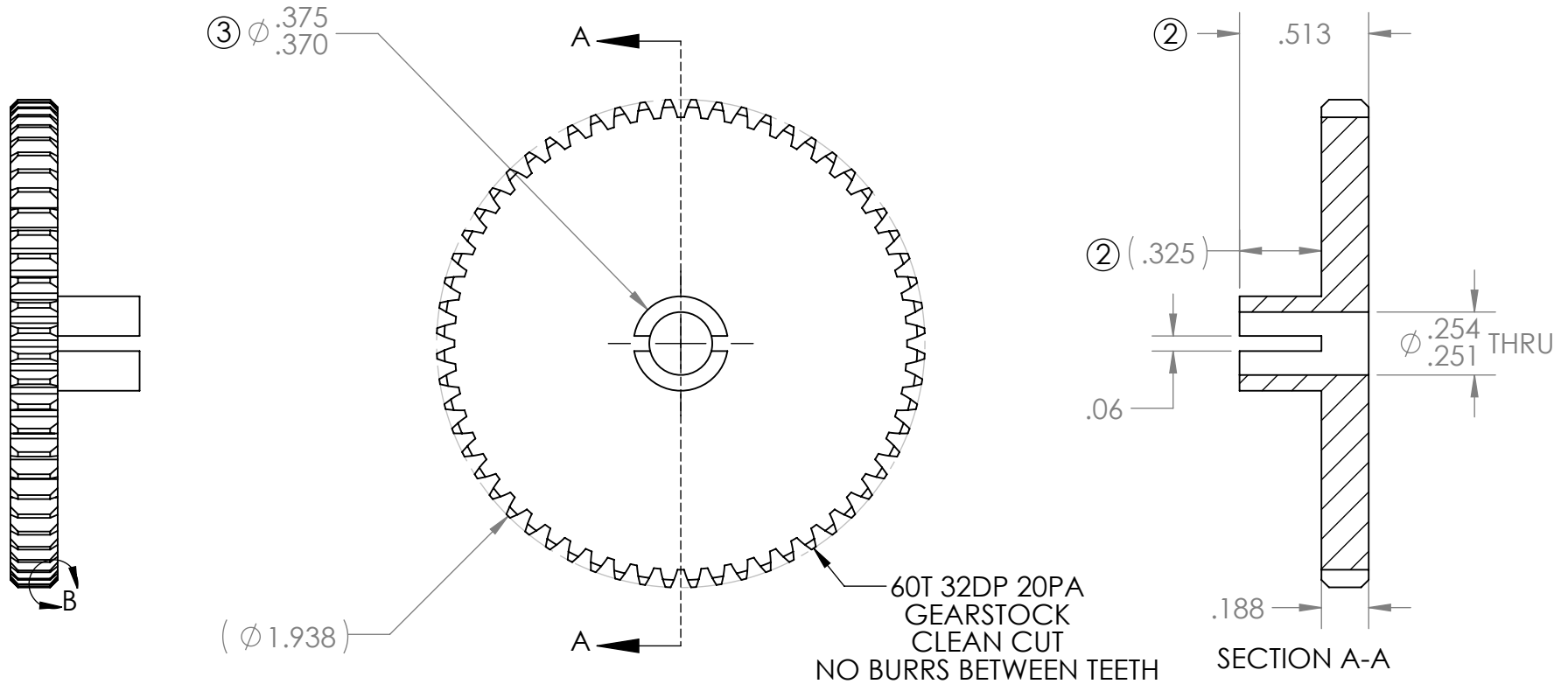
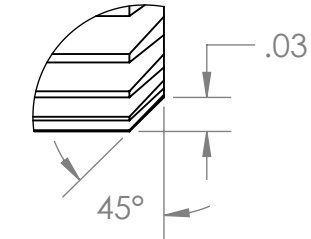
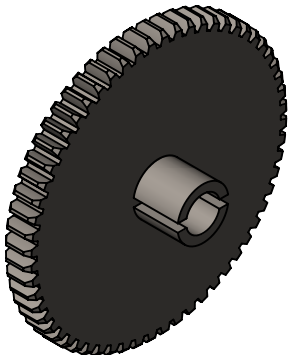


REVISION HISTORY			
REV.	DESCRIPTION	DATE	DRAWN BY
1	ORIGINAL PRINT	11/2/2016	N. LAWRENCE
2	REDUCED BOSS DIMENSION FROM .425 TO .325	11/10/2016	N. LAWRENCE
3	UPDATED TOL, ADDED CHAMFER, REDRAWN TO AMDS-1	7/3/2018	N. LAWRENCE



*** SEE CAD FOR ADDITIONAL TOOLPATH INFO***



DETAIL B
 SCALE 6 : 1

UNLESS OTHERWISE SPECIFIED:		COMMENTS:	
DIMENSIONS ARE IN INCHES		DUAL DIMENSIONS ARE IN MILLIMETERS.	
TOLERANCES:		BREAK ALL SHARP EDGES.	
FRACTIONAL	$\pm 1/16$		
ANGULAR: MACH	$\pm 1^\circ$		
ANGULAR: BEND	$\pm 5^\circ$		
ONE PLACE DECIMAL	± 0.1		
TWO PLACE DECIMAL	± 0.01		
THREE PLACE DECIMAL	± 0.005		
FOUR PLACE DECIMAL	± 0.0005		
MATERIAL	1117 STEEL	NAME	DATE
FINISH	ZINC PLATED	CHECKED	
		ENG APPR.	
		MFG APPR.	
		Q.A.	



TITLE:
 60T 32DP 20PA
 250IN BORE GEAR

SIZE	DWG. NO.	REV
A	am-3483	3
SCALE: 1.5:1		SHEET 1 OF 1