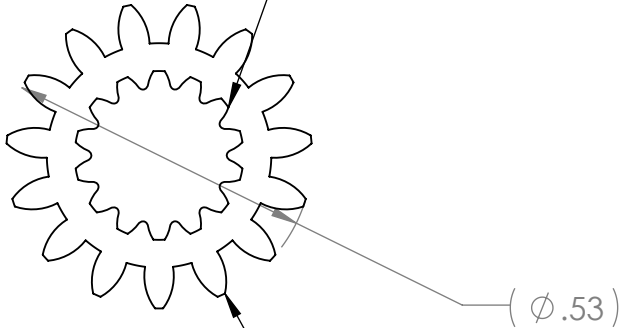
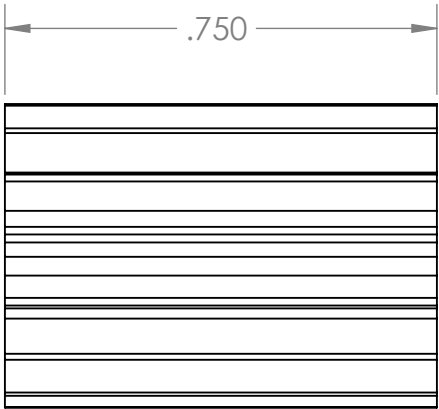
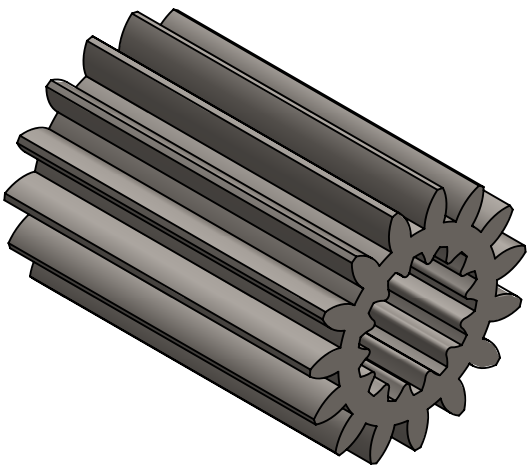


REVISION HISTORY			
REV.	DESCRIPTION	DATE	DRAWN BY
1	ORIGINAL PRINT	8/28/2019	N. MASSOUDA


SLIP FIT FOR SPLINE:
 STANDARD: ANSI MODULE B92 2M 1980 R1989
 TOOTH COUNT: 14
 PITCH: MODULE 0.5
 PRESSURE ANGLE 30°
 SPLINE FIT: FLAT ROOT SIDE FIT
 TOLERANCE CLASS: CLASS 4
 TIMING TO GEAR NOT REQUIRED



15T 32DP 20° P.A.
 SPUR GEARSTOCK
 CLEAN CUT
 NO BURRS IN TEETH



*** SEE CAD FOR ADDITIONAL TOOLPATH INFO***

UNLESS OTHERWISE SPECIFIED:		COMMENTS:				
DIMENSIONS ARE IN INCHES		DUAL DIMENSIONS ARE IN MILLIMETERS.				
TOLERANCES:		BREAK ALL SHARP EDGES		15T 32DP SPLINE {motor} GEAR		
FRACTIONAL	±1/16			SIZE	DWG. NO.	REV
ANGULAR: MACH	±1°			A	am-4148	1
ANGULAR: BEND	±5°			SCALE: 3:1 WEIGHT: SHEET 1 OF 1		
ONE PLACE DECIMAL	±0.1					
TWO PLACE DECIMAL	±0.01					
THREE PLACE DECIMAL	±0.005					
FOUR PLACE DECIMAL	±0.0005					
MATERIAL	4140 STEEL	NAME	DATE			
FINISH	ZINC PLATED	CHECKED				
DO NOT SCALE DRAWING		ENG APPR.				
		MFG APPR.				
		Q.A.				