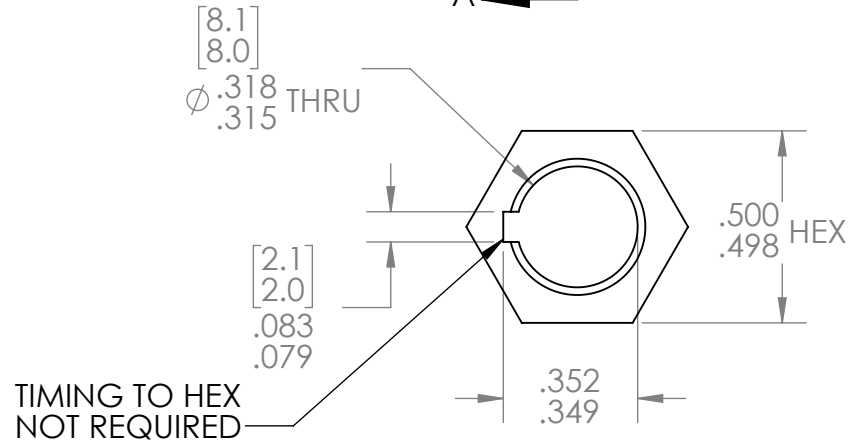
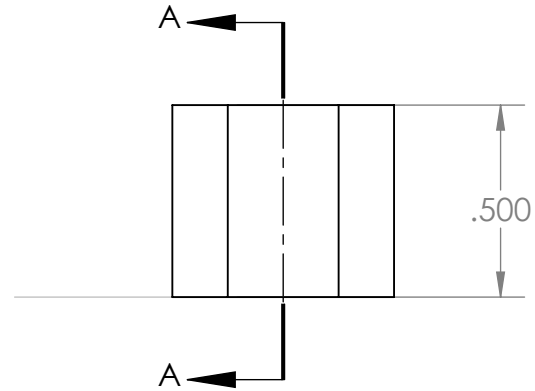
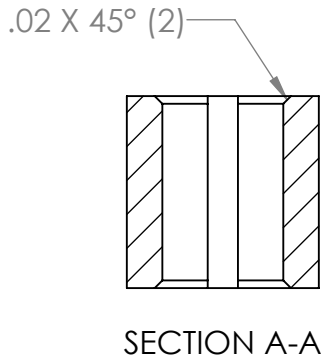
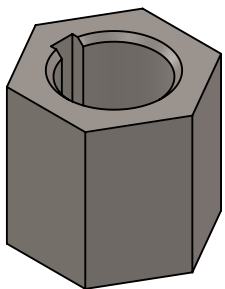


REVISION HISTORY			
REV.	DESCRIPTION	DATE	DRAWN BY
1	ORIGINAL PRINT	2/18/2020	N. MASSOUDA



*** SEE CAD FOR ADDITIONAL TOOLPATH INFO***



UNLESS OTHERWISE SPECIFIED:		COMMENTS:			
DIMENSIONS ARE IN INCHES		DUAL DIMENSIONS ARE IN MILLIMETERS.			
TOLERANCES:		BREAK ALL SHARP EDGES		TITLE:	
FRACTIONAL	±1/16			8mm TO 500 HEX	
ANGULAR: MACH	±1°			SHAFT ADAPTER, SHORT	
ANGULAR: BEND	±5°			SIZE	
ONE PLACE DECIMAL	±0.1			DWG. NO.	
TWO PLACE DECIMAL	±0.01			A am-0588_short	
THREE PLACE DECIMAL	±0.005			REV	
FOUR PLACE DECIMAL	±0.0005			1	
MATERIAL	1018, 1215, 12L14 STEEL	CHECKED	NAME	DATE	SCALE: 2:1
FINISH	DEBURR & ZINC PLATE	ENG APPR.			WEIGHT:
		MFG APPR.			SHEET 1 OF 1
	DO NOT SCALE DRAWING	Q.A.			