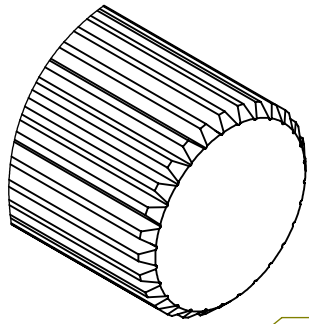


2

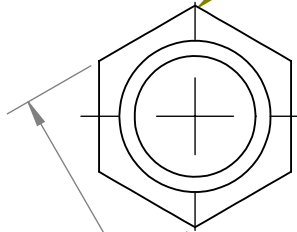
1

B

B



DETAIL B
SCALE 4 : 1



measured with
surface finish

max R.01 TYP
(see note 4)

45.00°

.317
.313

.501
.495

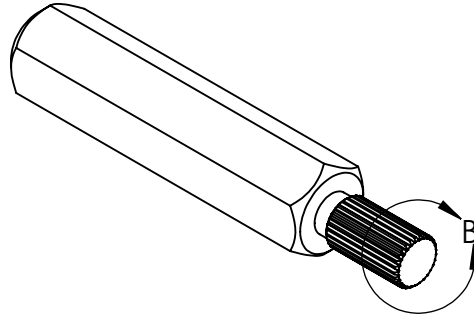
.1

1.18

2.17

(2.24)

(2.80)



.11
.09

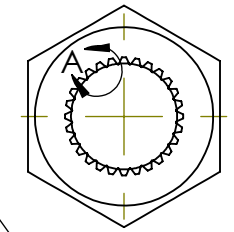
DIN 5481 7x8
(z=28)

Ø .31

Ø .27

Ø .25

DETAIL A
SCALE 10 : 1



Chamfer

Note:

- 1) All dimensions inches
- 2) Material: milled from 1/2" Hex Steel 4140.
- 3) Coating: Black zinc finish
- 4) Must be free of burrs and gouges that affect mating
- 5) If not indicated use general tolerance +/- 0.02 in.

A

A

PROPRIETARY AND CONFIDENTIAL
THE INFORMATION CONTAINED IN THIS DRAWING IS THE SOLE PROPERTY OF <INSERT COMPANY NAME HERE>. ANY REPRODUCTION IN PART OR AS A WHOLE WITHOUT THE WRITTEN PERMISSION OF <INSERT COMPANY NAME HERE> IS PROHIBITED.

		UNLESS OTHERWISE SPECIFIED:		NAME	DATE
		DIMENSIONS ARE IN mm	DRAWN		
		TOLERANCES:	CHECKED		
		FRACTIONAL ±	ENG APPR.		
		ANGULAR: MACH ± BEND ±	MFG APPR.		
		TWO PLACE DECIMAL ±	Q.A.		
		THREE PLACE DECIMAL ±	COMMENTS:		
		INTERPRET GEOMETRIC TOLERANCING PER:			
		MATERIAL			
		FINISH			
NEXT ASSY	USED ON				
APPLICATION		DO NOT SCALE DRAWING			



TITLE:
**Adapter - PLG motor
to 1/2" hex**

SIZE	DWG. NO.	REV
A	JE-PLG-ADPTR-2	1
WEIGHT: 50g(1.7 oz)		SHEET 1 OF 1

2

1