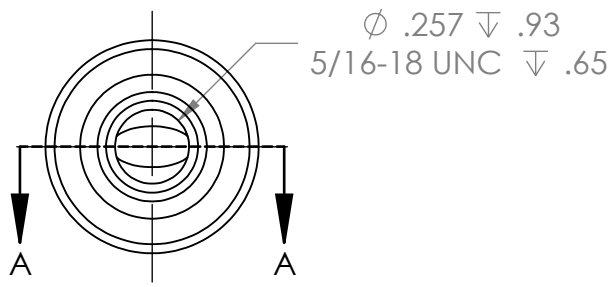
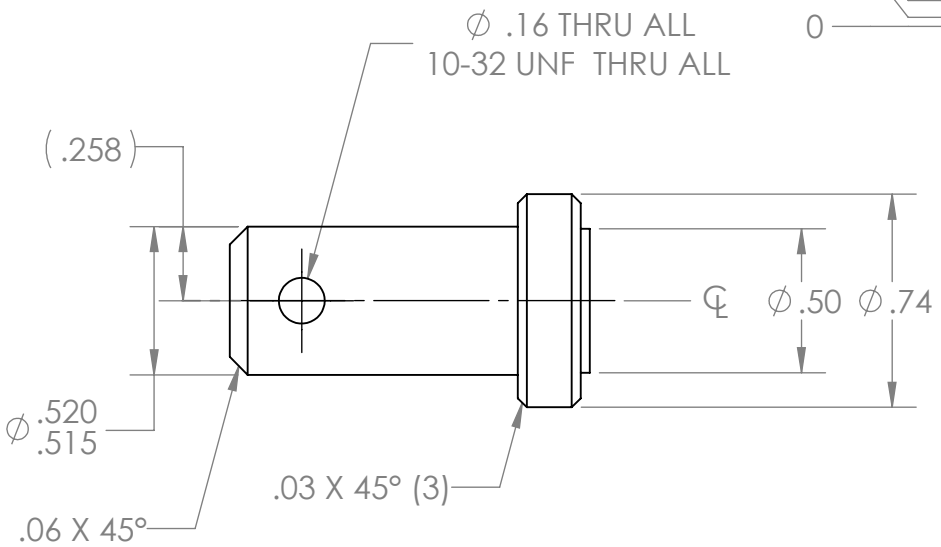
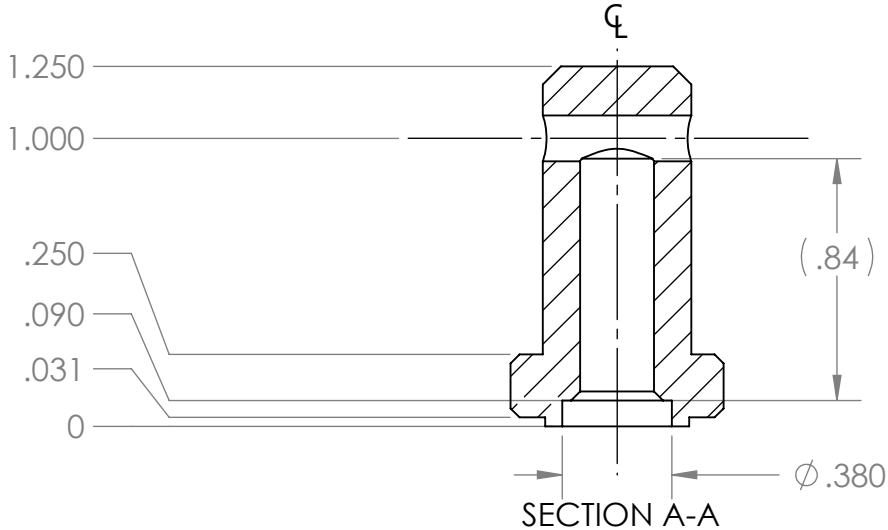
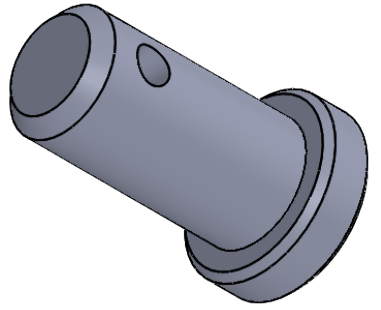



REVISION HISTORY			
REV.	DESCRIPTION	DATE	DRAWN BY
1	ORIGINAL PRINT	6/15/2021	R.SIMPSON
2	CHANGED MATERIAL	7/12/2021	R. SIMPSON



\*\*\* SEE CAD FOR ADDITIONAL TOOLPATH INFO\*\*\*



UNLESS OTHERWISE SPECIFIED:		COMMENTS:			
<b>DIMENSIONS ARE IN INCHES</b>		DUAL DIMENSIONS ARE IN MILLIMETERS.			
TOLERANCES:		BREAK ALL SHARP EDGES		TITLE:	
FRACTIONAL	±1/16			SHORT SURGICAL	
ANGULAR: MACH	±1°			TUBING ROLLER INSERT	
ANGULAR: BEND	±5°			SIZE	
ONE PLACE DECIMAL	±0.1			DWG. NO.	
TWO PLACE DECIMAL	±0.01			A am-4593	
THREE PLACE DECIMAL	±0.005			REV	
FOUR PLACE DECIMAL	±0.0005			2	
MATERIAL	42CrMo STEEL	NAME	DATE	SCALE: 3:2	
FINISH	ZINC PLATED	CHECKED	NM	07/12/21	WEIGHT:
DO NOT SCALE DRAWING		ENG APPR.			SHEET 1 OF 1
		MFG APPR.			
		Q.A.			