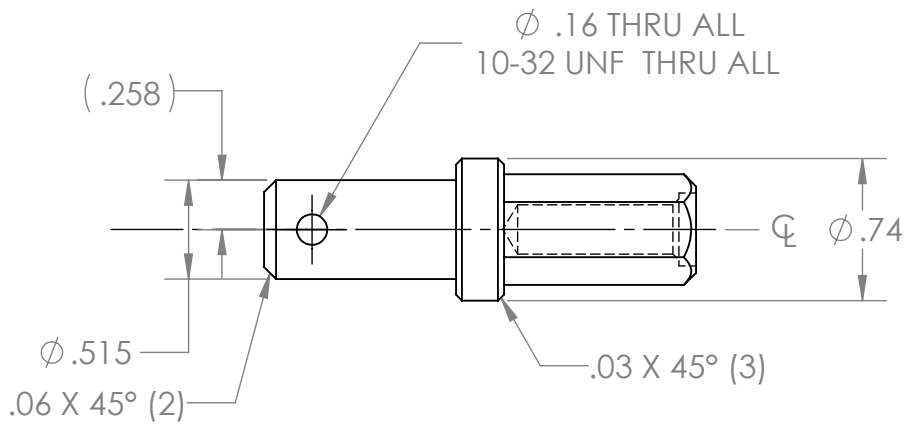
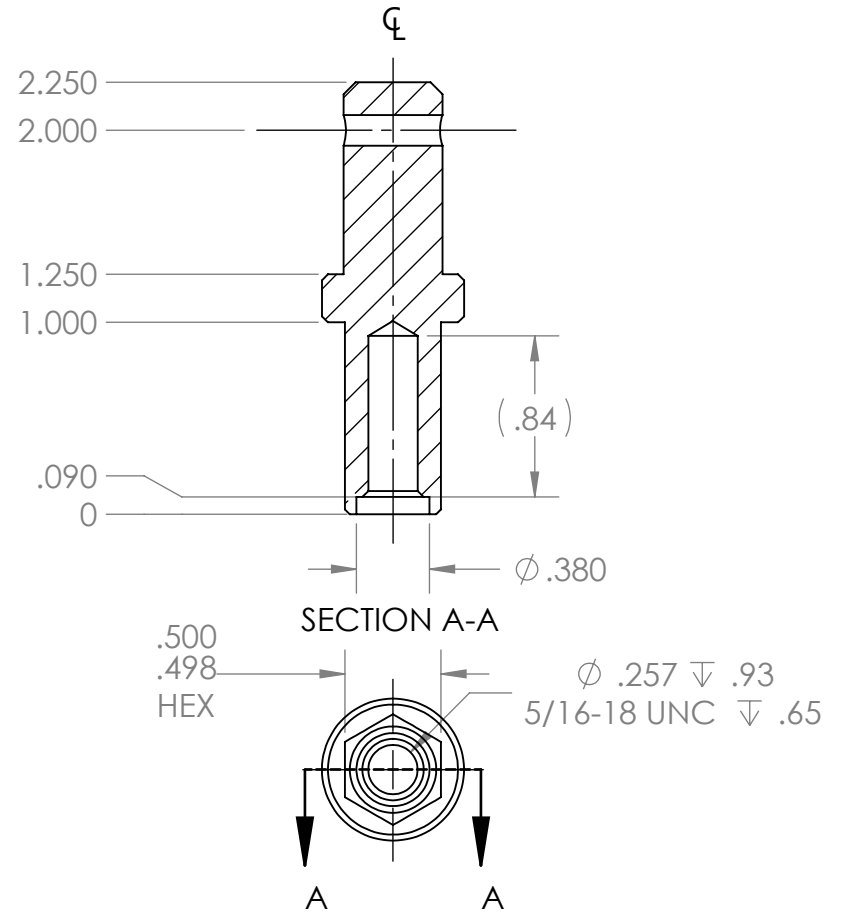
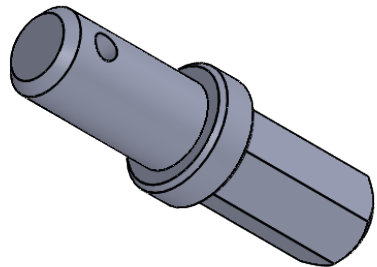



REVISION HISTORY			
REV.	DESCRIPTION	DATE	DRAWN BY
1	ORIGINAL PRINT	6/15/2021	R. SIMPSON
2	CHANGED MATERIAL	7/12/2021	R. SIMPSON



\*\*\* SEE CAD FOR ADDITIONAL TOOLPATH INFO\*\*\*



UNLESS OTHERWISE SPECIFIED:		COMMENTS:				
<b>DIMENSIONS ARE IN INCHES</b>		DUAL DIMENSIONS ARE IN MILLIMETERS.				
TOLERANCES:		BREAK ALL SHARP EDGES		TITLE:		
FRACTIONAL	±1/16			LONG SURGICAL		
ANGULAR: MACH	±1°			TUBING ROLLER INSERT		
ANGULAR: BEND	±5°			SIZE		
ONE PLACE DECIMAL	±0.1			DWG. NO.		
TWO PLACE DECIMAL	±0.01			A am-4594		
THREE PLACE DECIMAL	±0.005			REV		
FOUR PLACE DECIMAL	±0.0005			2		
MATERIAL	42CrMo STEEL	CHECKED	NAME	DATE	SCALE: 1:1	
FINISH	ZINC PLATED	ENG APPR.	NM	07/12/21	WEIGHT:	
DO NOT SCALE DRAWING		MFG APPR.			SHEET 1 OF 1	
		Q.A.				