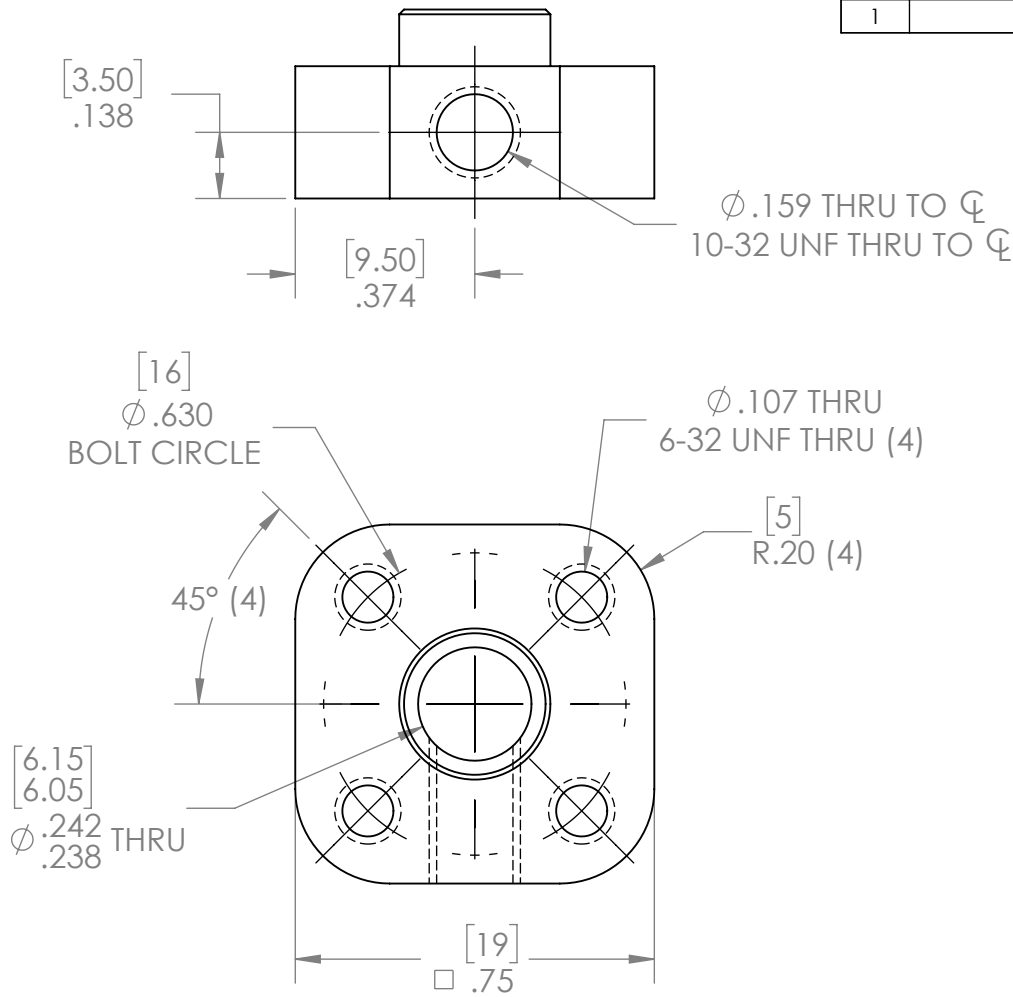
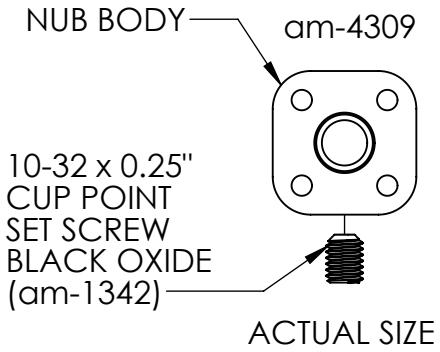
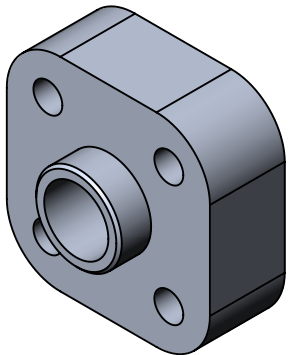


REVISION HISTORY			
REV.	DESCRIPTION	DATE	DRAWN BY
1	ORIGINAL PRINT	6/1/2020	N. LAWRENCE



*** SEE CAD FOR ADDITIONAL TOOLPATH INFO***



UNLESS OTHERWISE SPECIFIED:		COMMENTS:	
DIMENSIONS ARE IN INCHES		DUAL DIMENSIONS ARE IN MILLIMETERS.	
TOLERANCES:		BREAK ALL SHARP EDGES.	
FRACTIONAL	±1/16	CHECKED	NAME
ANGULAR: MACH	±1°	ENG APPR.	DATE
ANGULAR: BEND	±5°	MFG APPR.	
ONE PLACE DECIMAL	±0.1	Q.A.	
TWO PLACE DECIMAL	±0.01		
THREE PLACE DECIMAL	±0.005		
FOUR PLACE DECIMAL	±0.0005		
MATERIAL	6061-T6 AL		
FINISH	DEBURRED SILVER ANNOXIDE		
DO NOT SCALE DRAWING			



TITLE:
6mm ROUND BORE SINGLE BOSS NUB

SIZE	DWG. NO.	REV
A	am-4309	1
SCALE: 2.5:1		SHEET 1 OF 1