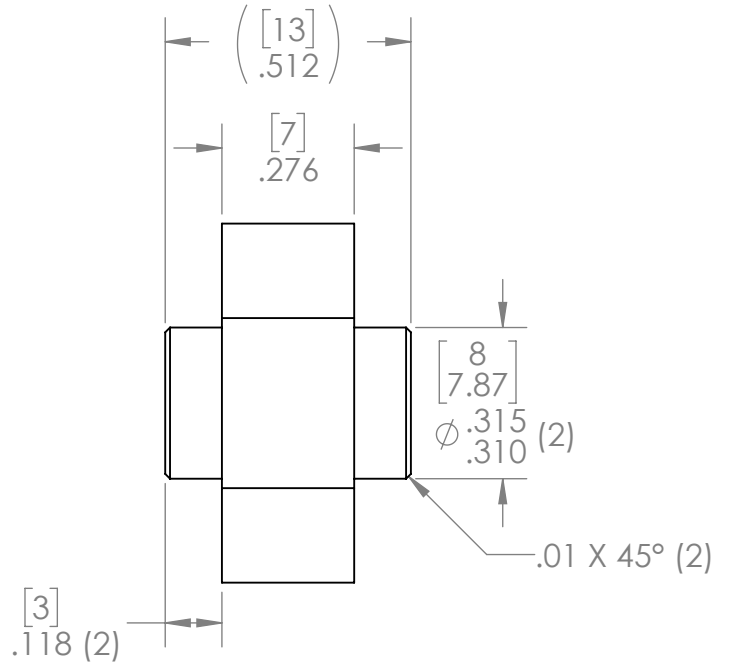
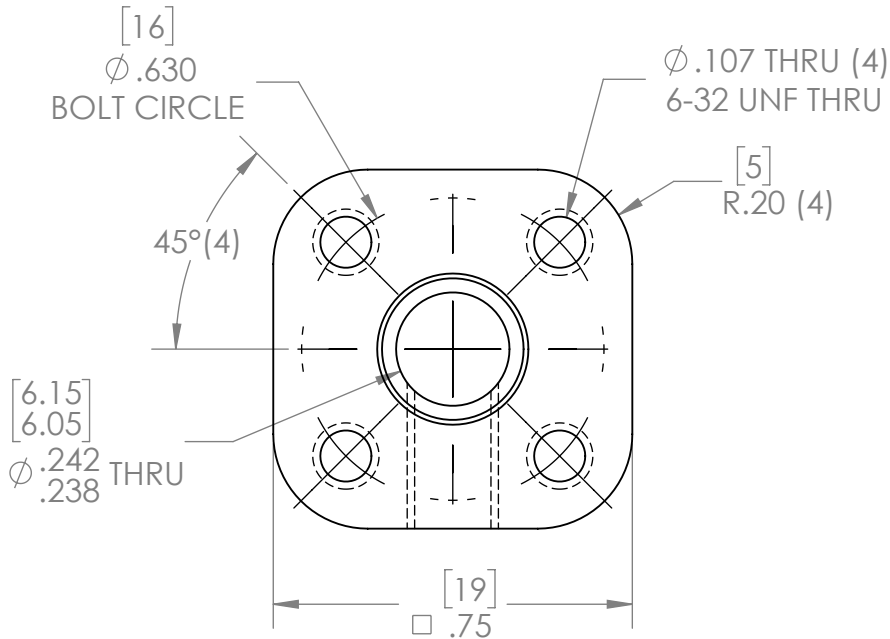
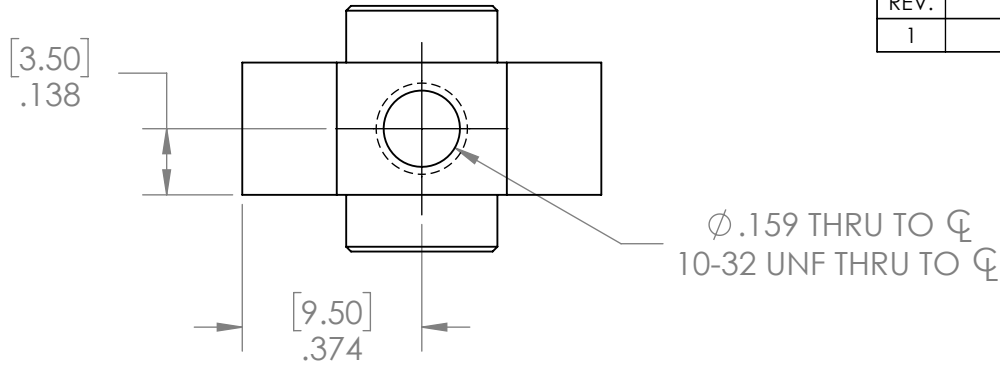
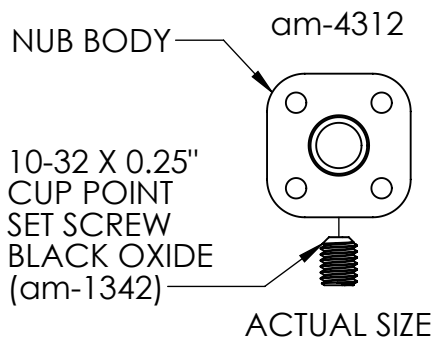
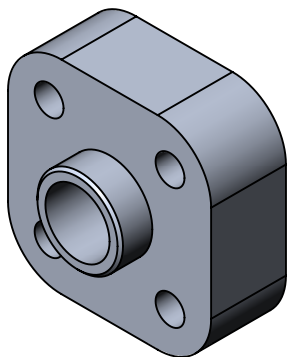


REVISION HISTORY			
REV.	DESCRIPTION	DATE	DRAWN BY
1	ORIGINAL PRINT	6/2/2020	N. LAWRENCE



*** SEE CAD FOR ADDITIONAL TOOLPATH INFO***



UNLESS OTHERWISE SPECIFIED:		COMMENTS:	
DIMENSIONS ARE IN INCHES		DUAL DIMENSIONS ARE IN MILLIMETERS.	
TOLERANCES:		BREAK ALL SHARP EDGES.	
FRACTIONAL	$\pm 1/16$		
ANGULAR: MACH	$\pm 1^\circ$		
ANGULAR: BEND	$\pm 5^\circ$		
ONE PLACE DECIMAL	± 0.1		
TWO PLACE DECIMAL	± 0.01		
THREE PLACE DECIMAL	± 0.005		
FOUR PLACE DECIMAL	± 0.0005		
MATERIAL	6061-T6 AL	NAME	DATE
FINISH	DEBURRED SILVER ANNOXIDIZE	CHECKED	KK 6/10/20
	DO NOT SCALE DRAWING	ENG APPR.	
		MFG APPR.	
		Q.A.	



TITLE:
6mm ROUND BORE
DOUBLE BOSS NUB

SIZE	DWG. NO.	REV
A	am-4312	1
SCALE: 2.5:1		SHEET 1 OF 1