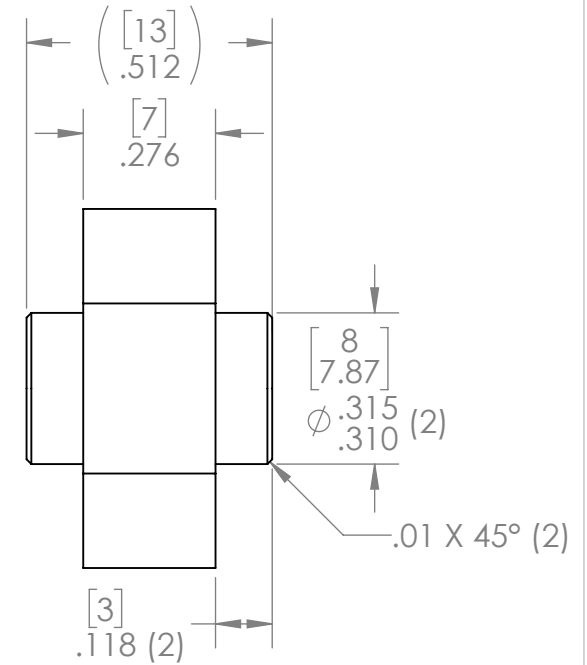
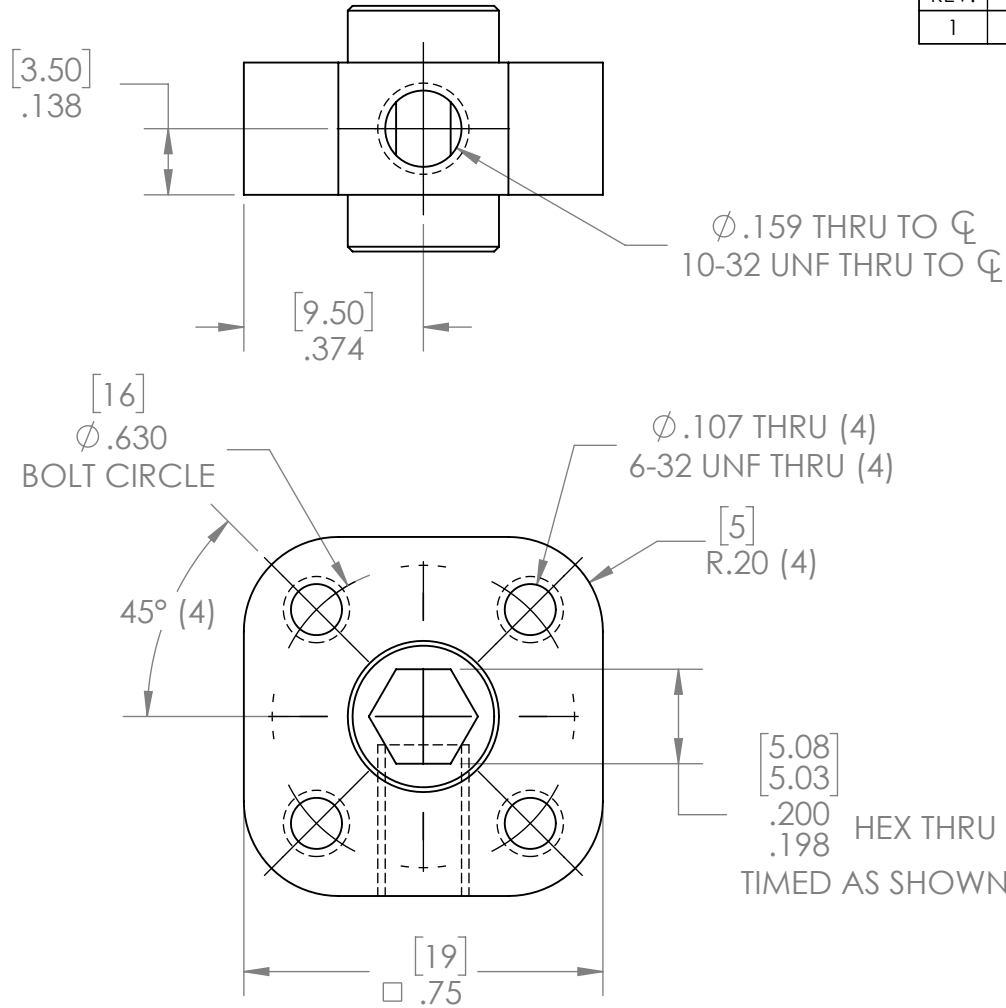
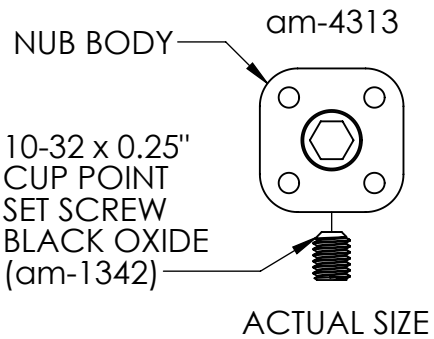
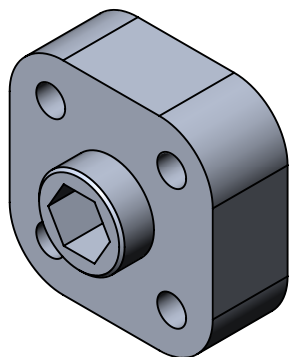


REVISION HISTORY			
REV.	DESCRIPTION	DATE	DRAWN BY
1	ORIGINAL PRINT	6/2/2020	N. LAWRENCE



\*\*\* SEE CAD FOR ADDITIONAL TOOLPATH INFO\*\*\*



UNLESS OTHERWISE SPECIFIED:		COMMENTS:	
<b>DIMENSIONS ARE IN INCHES</b>		DUAL DIMENSIONS ARE IN MILLIMETERS.	
TOLERANCES:		BREAK ALL SHARP EDGES.	
FRACTIONAL	±1/16	CHECKED	NAME
ANGULAR: MACH	±1°	ENG APPR.	DATE
ANGULAR: BEND	±5°	MFG APPR.	
ONE PLACE DECIMAL	±0.1	DO NOT SCALE DRAWING	Q.A.
TWO PLACE DECIMAL	±0.01		
THREE PLACE DECIMAL	±0.005		
FOUR PLACE DECIMAL	±0.0005		
MATERIAL	6061-T6 AL		



TITLE:  
 5mm HEX BORE  
 DOUBLE BOSS HD NUB

SIZE	DWG. NO.	REV
<b>A</b>	am-4313	1
SCALE: 2.5:1		SHEET 1 OF 1