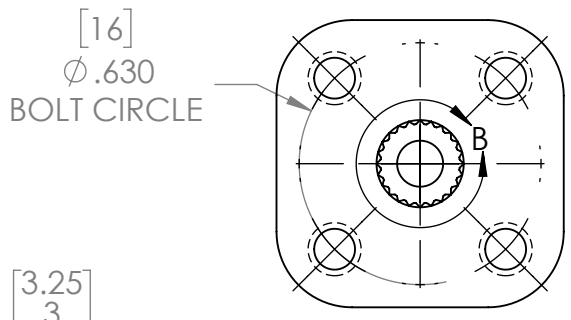
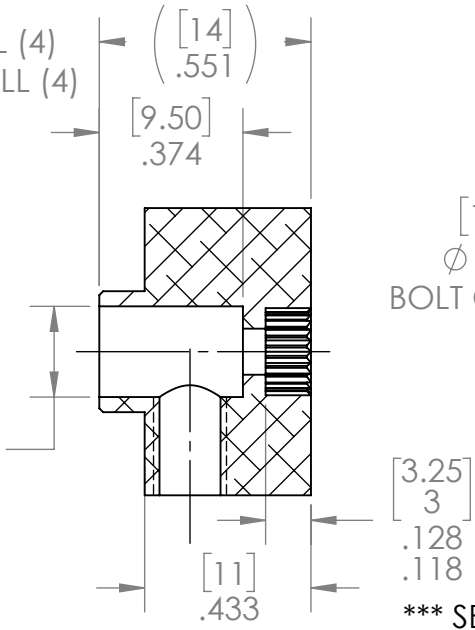
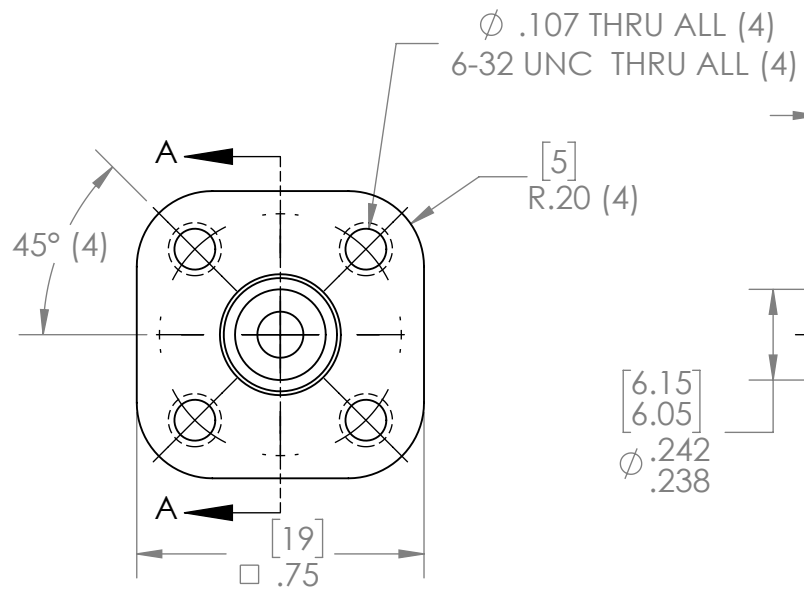
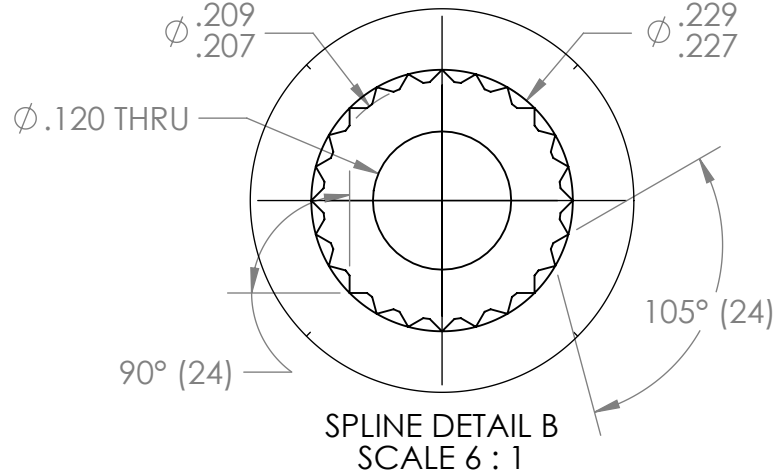
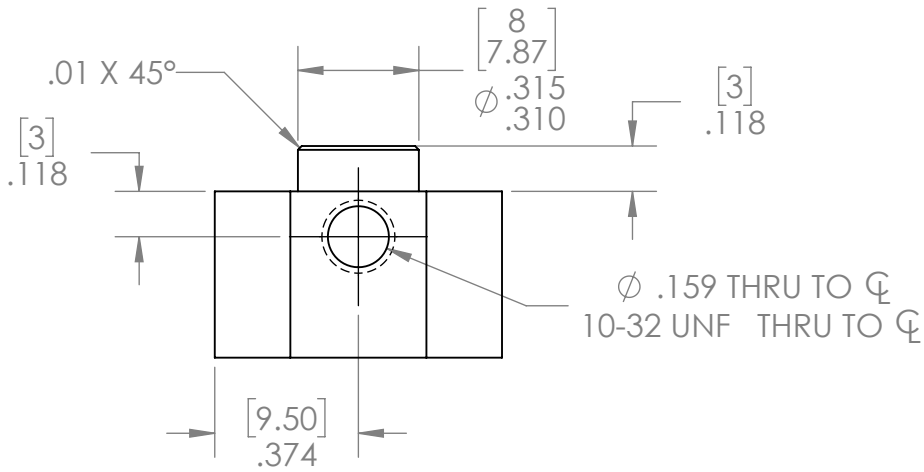
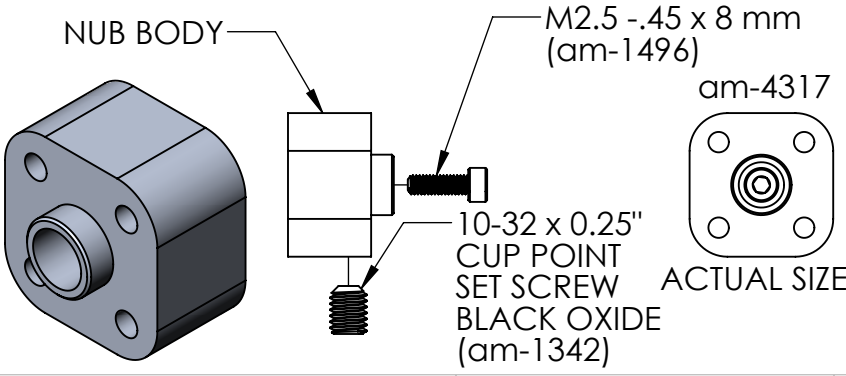


| REVISION HISTORY | | | |
|------------------|----------------|----------|-------------|
| REV. | DESCRIPTION | DATE | DRAWN BY |
| 1 | ORIGINAL PRINT | 6/2/2020 | N. LAWRENCE |



*** SEE CAD FOR ADDITIONAL TOOLPATH INFO***



| | | | |
|---------------------------------|------------------------------|-------------------------------------|-----------|
| UNLESS OTHERWISE SPECIFIED: | | COMMENTS: | |
| DIMENSIONS ARE IN INCHES | | DUAL DIMENSIONS ARE IN MILLIMETERS. | |
| TOLERANCES: | | BREAK ALL SHARP EDGES. | |
| FRACTIONAL | ±1/16 | | |
| ANGULAR: MACH | ±1° | | |
| ANGULAR: BEND | ±5° | | |
| ONE PLACE DECIMAL | ±0.1 | | |
| TWO PLACE DECIMAL | ±0.01 | | |
| THREE PLACE DECIMAL | ±0.005 | | |
| FOUR PLACE DECIMAL | ±0.0005 | | |
| MATERIAL | 6061-T6 AL | NAME | DATE |
| FINISH | DEBURRED SILVER ANNOIDIZE | CHECKED | KK 6/8/20 |
| DO NOT SCALE DRAWING | | ENG APPR. | |
| | | MFG APPR. | |
| | | Q.A. | |

AndyMark

TITLE:
**6mm BORE 24T C1
SERVO HD NUB**

| | | |
|------------|----------------|--------------|
| SIZE | DWG. NO. | REV |
| A | am-4317 | 1 |
| SCALE: 2:1 | | SHEET 1 OF 1 |